

Stakeholder Consultation

Barossa Gas Project

In this edition

- BW Opal Naming Ceremony held
- Successful drilling results
- Pipeline installation fully complete
- SURF continues

Work progress highlights

The Barossa Gas Project is 95.2 per cent complete. The project remains on track for first gas in the third quarter of 2025.

The Floating Production, Storage and Offloading (FPSO) vessel, currently in Singapore, has been formally named ahead of the final preparations for its journey to Australia.

All sections of the gas pipeline have now been installed in Commonwealth and Northern Territory Waters and testing and pre-commissioning activities have been successfully completed with tie-in to DLNG ongoing.

Four wells have been drilled and completed, a fifth well is suspended for later completion and drilling of the sixth well is in progress. Production from four wells is capable of delivering full production rates at DLNG.



FPSO construction

The Barossa FPSO is now the BW Opal following a formal Naming Ceremony held at the construction yard in Singapore.



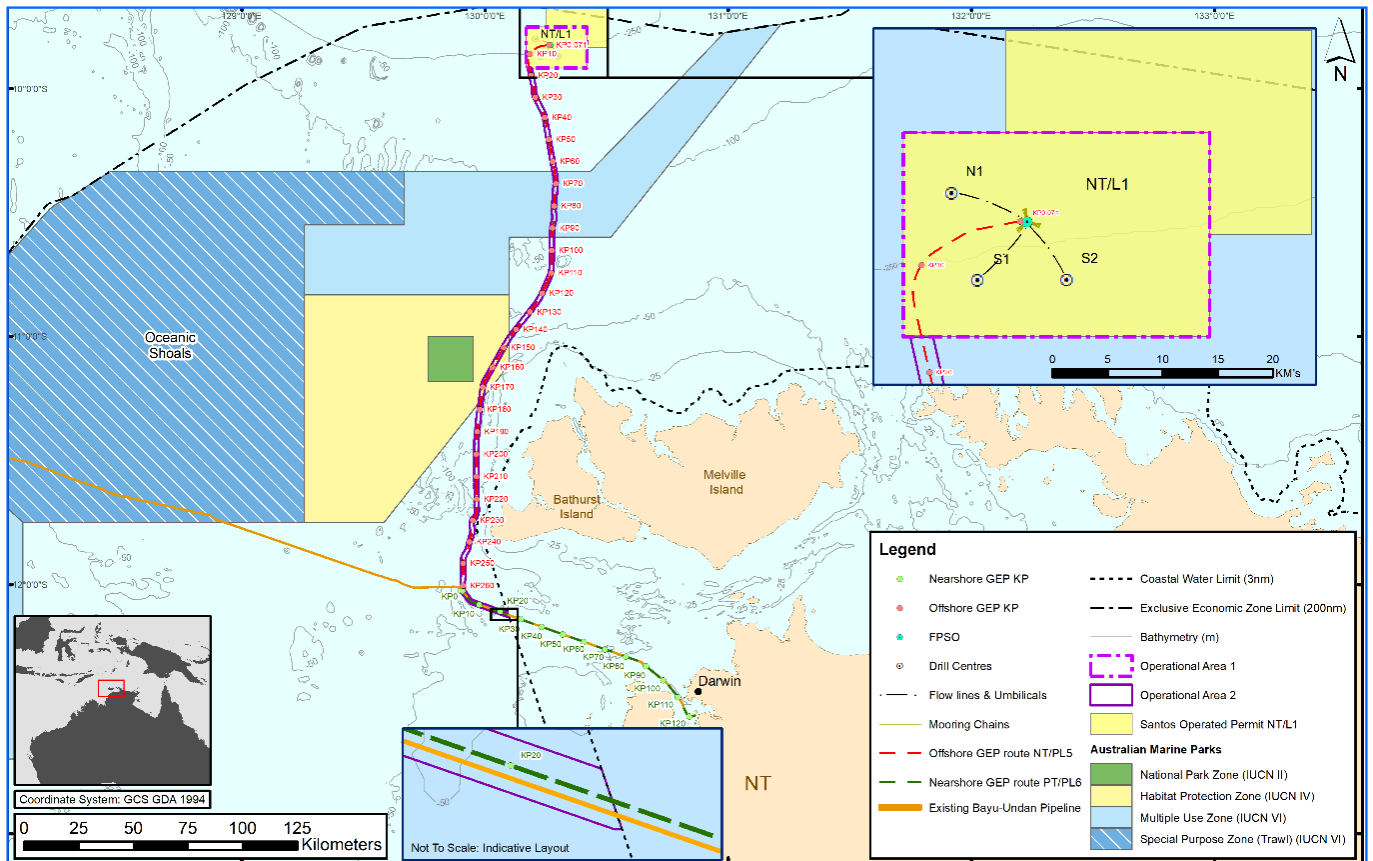
The BW Opal is among the largest and most technically advanced FPSOs ever built, featuring a 358m long hull and accommodation for up to 140 personnel.

It has a gas handling capacity of 850 million standard cubic feet per day and features cutting-edge combined-cycle gas turbine system with waste heat recovery to reduce emissions and energy consumption.

Once onshore commissioning has been completed, the BW Opal will be towed from Singapore to Australia using ocean-going tugs.

Following its arrival in the Barossa Field, the BW Opal will be connected to the mooring system on the seabed. Equipment and systems will all be tested during a commissioning stage in readiness for start-up operations.

The BW Opal will be permanently located in the Field and provide gas to the Darwin LNG (DLNG) facility for the next 25 years.



The Barossa Gas Development.

Project Overview

The Barossa Gas Development, located approximately 285km offshore from Darwin in the Northern Territory, comprises a Floating Production Storage and Offloading (FPSO) facility (now named the BW Opal), a subsea production system, supporting in-field subsea infrastructure and a gas export pipeline (GEP).

Once complete, the Barossa Gas Development will transport natural gas from the offshore Barossa field via the GEP to the existing DLNG facility.

The project remains on track for first gas in the third quarter of 2025. Barossa gas is a critical energy source and will ensure affordable and reliable energy for Santos' customers for decades to come.

The Barossa Gas Development will create and sustain hundreds of jobs in the Northern Territory and will inject billions of dollars into the local economy, supporting the continued regional development of northern Australia.

Subsea Infrastructure Installation

The SURF (Subsea, Umbilicals, Risers, Flexible) program continued with installation, tie-in and testing of the subsea infrastructure in the Barossa Field. All risers have been pre-commissioned ready for hook-up to the FPSO.

Installation and pre-commissioning of the riser system and all equipment at the S2 Drill Centre has been completed, ready for commissioning and start up.

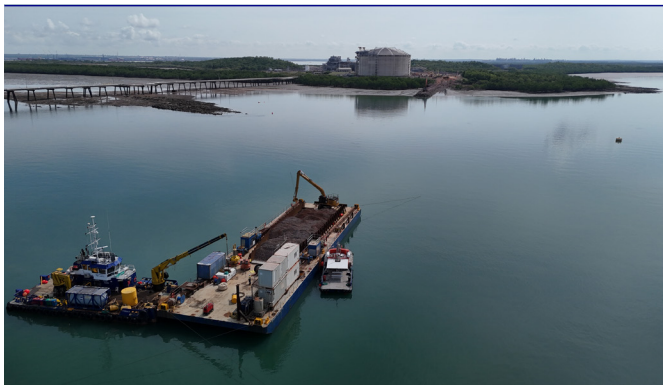
The third campaign will commence when the drilling phase at the N1 Drill Centre is completed.

Once all installation and testing has been completed, a preservation phase will commence that will maintain the integrity of the infrastructure in readiness for future operations.

All work has been completed to date in accordance with an accepted Environment Plan.



Audacia installing the pipeline.



Rock installation at the shorecrossing.



Rock installation at the shorecrossing.

Darwin Pipeline Duplication

The Darwin Pipeline Duplication (DPD) Project effectively involves 'duplicating' the existing Bayu-Undan to Darwin pipeline in NT internal waters, NT coastal waters and Commonwealth waters.

Once in operation the new pipeline will connect with the Barossa Gas Export Pipeline to transport natural gas (not oil or condensate) from the Barossa gas field to the DLNG facility.

All sections of the gas pipeline have now been installed in Commonwealth and Northern Territory Waters and testing and pre-commissioning activities were successfully completed with tie-in to DLNG ongoing.

In December the shallow water barge 'Sandpiper' completed installing the first 30kms of the 92 kms section of pipeline in NT internal waters. The Sandpiper commenced with the shore crossing at DLNG and then installed the pipeline through Darwin harbour before handing over to the dynamically positioned pipelay vessel 'Audacia'

to complete the section of the pipeline in deeper NT internal waters.

Rock protection over the pipeline at the shore crossing at Wickham Point and in deeper water within Darwin harbour has also been completed.

Pipelay in NT coastal waters (8 kms) and Commonwealth waters (23 kms) was completed by the 'Audacia' in February and pre-commissioning of the pipeline was completed in March.

Other users of the marine environment should continue to exercise caution at all times and maintain a distance of at least 500 metres from any vessels undertaking these activities.

The activities are managed to ensure that environmental impacts and risks are avoided or mitigated to meet Santos and regulatory requirements. All work has been completed to date in accordance with an accepted Environmental Management Plan.

Drilling and Completions

Drilling of the production wells is continuing at the Barossa Field, 285km offshore from Darwin, with four of six planned wells drilled and completed. Production from four wells is capable of delivering full production rates at DLNG.

During the first quarter of 2025 drilling was successfully completed at the fifth well, N1-2. Early flow back results indicate reservoir properties at the higher end of pre-drill expectations.

The moored semisubmersible mobile offshore drilling unit (MODU) is currently positioned at the North 1 (N1) drill centre location with well construction operations continuing.

Drilling activities occur within a 2.5-km radius of each well. During drilling, a 500-metre exclusion zone (known as a petroleum safety zone) is in place around the MODU. Vessels are prohibited from entering or being present in a petroleum safety zone without authorisation.

The MODU continues to be supported by helicopters and up to four support vessels which transit between the development area and onshore supply base in Darwin as required.



The Valaris MODU Drilling Team.

All work has been completed to date in accordance with the accepted Environment Plan.

The entire drilling campaign, including completions and installation of subsea vertical trees, is still expected to take approximately 24 months in total. All schedule estimates are subject to weather and operational performance.

Work Opportunities

Several First Nations people continue to be engaged in Santos' funded roles/ training programs that work offshore in positions related to the Barossa Gas Project.

These comprise one Larrakia and five Tiwi people engaged in offshore assistant roles on the Santos' contracted drilling rig, one Tiwi man engaged as a Cultural Monitor on SURF activities and a Larrakia man engaged as a Cultural Monitor on DPD activities.

In addition, two Santos Offshore Health, Safety and Environment (HSE) Advisor Trainees have been recruited and are now undertaking a formal 18-24 month traineeship to obtain a Certificate IV in HSE. Both are currently working offshore on the Santos' contracted drill rig under the leadership of Santos HSE team members.

Another Tiwi man, one of the trainees in the offshore assistant training program on the Santos contracted drill rig, transitioned from an offshore assistant position to a core roustabout position, where he continues in his role.

First Nations people represent more than 55 percent of Santos' current trainees and apprentices in the NT.

Barossa Aboriginal Future Fund

Santos' Barossa Aboriginal Future Fund (BAFF) aims to invest in projects that will directly benefit NT Aboriginal Coastal Communities.

The Fund will invest in projects and programs that improve community infrastructure, health, education, housing, and economic outcomes and support employment pathways.

The Fund will also support First Nations people to maintain cultural practices, carry out cultural obligations and care for country.

The Barossa Joint Venture Partners initial contribution to the Fund is \$10 million, with additional payments to be made into the Fund once Barossa starts producing and selling gas.

Santos is working with our Barossa Joint Venture Partners to finalise the revenue stream for the Fund and establish legal structures with sound governance.

Santos wants to listen to NT Coastal Aboriginal people about the needs for their communities.

If you want more information or want to share your ideas, you can visit the NT Community Team at the Santos shop in the Darwin Mall or contact us via email at enquiriesNT@santos.com or phone on **+61 8919 1900**.

Environmental Approvals and Consultation

DPD Project – NT waters

DPD activities in NT internal waters were undertaken in compliance with the primary environmental approvals received from the NT and Commonwealth governments.

The NT Government approved the DPD Project following the completion of assessment by the NT Environment Protection Authority under the *Environment Protection Act 2019 (NT)*.

The DPD Project was also assessed and approved by the Commonwealth Department of Climate Change, Energy, the Environment and Water (DCCEEW) under the *Environment Protection and Biodiversity Conservation Act 1999 (Cth)*.

DPD Project – Commonwealth and NT coastal waters

DPD activities in NT Coastal Waters were undertaken in compliance with the primary environmental approvals received from the Commonwealth and NT governments.

The Commonwealth Government approved the activities (~23km section) in Commonwealth Waters following assessment of an Environment Plan under the *Offshore Petroleum and Greenhouse Gas Storage Act 2006 (Cth)*.

As noted above, the DPD Project was also assessed and approved by DCCEEW under the *Environment Protection and Biodiversity Conservation Act 1999 (Cth)*.

The NT Government approved the activities in NT Coastal Waters (~8km section) following assessment of the Offshore Construction Environmental Management Plan (CEMP) under the *Petroleum (Submerged Lands) Act 1981 (NT)* and *Environment Protection Act 2019 (NT)*.

The DPD EP can be viewed [here](#) while the CEMP is available [here](#)

Barossa Productions Operations – Commonwealth and NT waters

The Barossa Production Operations EP in Commonwealth waters (~285km section) was accepted by NOPSEMA in April 2025. The accepted EP is available on the NOPSEMA website [here](#).

The EP covers (among other things) the following activities:

- Arrival, hook-up and commissioning of the FPSO (section 2.5 of the EP);
- Initial start-up of production to a steady state (section 2.6 of the EP);
- Operation of the FPSO and subsea infrastructure and associated activities (section 2.7 of the EP); and
- Inspection, monitoring, maintenance and repair (IMMR) activities for subsea infrastructure and the Gas Export Pipeline (section 2.9 of the EP);

The EP also provides information on (among other things):

- the potential risks and impacts of these proposed activities; and
- the consultation undertaken by Santos on the proposed activities (section 4 of the EP).

If you have any queries about this EP, please contact us by phone or email (see details below).

An Operations EMP (OEMP) for operational activities along the Barossa pipeline in NT coastal waters (~8km section) has been submitted to the NT-DME for assessment and approval. An OEMP for the activities in NT internal waters (~92km section) will also be provided to the NT-DME.

Contact Us

We are committed to ongoing engagement about our activities. If you require further information or would like to speak to us, please do not hesitate to contact us.

Phone: **1800 267 600**

Email: offshore.consultation@santos.com

Website: santos.com/barossa