



**Santos Fairview Lot 20WT32
Ecological Assessment
Santos Fairview Water to
Grade Pipeline
Santos**

Report ref:
221708
15 June 2011
Revision 1

Santos Document No: 0020-GLNG-4-1.3-0032 rev0

Document prepared by:


Aurecon Australia Pty Ltd
ABN 54 005 139 873
Level 1, Tennyson House
9 Tennyson Street
Mackay
Queensland 4740 Australia

T: +61 7 4977 5200

F: +61 7 4977 5201

E: mackay@ap.aurecongroup.com

W: aurecongroup.com

Document control						
Document ID: 20110608_Fairview_Lot20WT32_Ecological Assessment						
Rev No	Date	Revision details	Typist	Author	Verifier	Approver
0	8 June 2011	Draft for review	SMW	SMW/VJB/SJS/CS		
1	15 June 2011	Final	KH	SMW/VJB/SJS/CS	GAP	JS

A person using Aurecon documents or data accepts the risk of:

- a) Using the documents or data in electronic form without requesting and checking them for accuracy against the original hard copy version.
- b) Using the documents or data for any purpose not agreed to in writing by Aurecon.

This document is solely for the purposes of an ecological assessment and does not provide any legal advice regarding development locations and/or activities

Contents

1.	Background	2
1.1	Project Description	2
1.2	Purpose of Report	2
2.	Methodology	3
2.1	Desktop Methodology	3
2.2	Field Methodology	3
3.	Ecological Assessment	5
3.1	Corridor F3	5
3.2	Corridor F4	6
3.3	Corridor F5	8
3.4	Corridor F7	10
3.5	Corridor F8	11
3.6	Corridor F10	13
3.7	Corridor F15	15
3.8	Corridor F16	16
3.9	Corridor F19	18
3.10	Corridor F20	20
3.11	Corridor F21	21
3.12	Corridor F24	25
3.13	Corridor F163	27
3.14	Corridor F164	33
3.15	Corridor F236	38
3.16	Corridor F292	39
3.17	Corridor T3	41
3.18	Road Upgrade Corridor	43
4.	References	48

Appendix A

Flora species list for Fairview lot 20WT32

1. Background

1.1 Project Description

Santos Ltd (Santos) have commissioned Aurecon Australia Pty Ltd (Aurecon) to conduct an ecological investigation of areas proposed for the construction of multiple 'water to grade' pipelines within the Fairview gas fields.

The Fairview gas fields are centred around the Injune area and are characterised by elevated sandstone ranges including the Carnarvon and Expedition Ranges and part of the Mount Hutton and Kongabula Ranges. The Dawson River and other smaller watercourses drain this area and the vegetation is dominated by Eucalyptus and White Cypress Pine woodland, Brigalow and Semi-evergreen Vine Thicket (Eddie, 2007).

Much of this area has been subjected to cattle grazing and other agricultural practices as well as previous development associated with the gas fields.

Santos has identified proposed corridors to allow for the construction of 'water to grade' pipelines to transport water from existing gas wells. Aurecon has undertaken desktop and on-ground ecological assessments of the proposed pipeline corridors to identify any environmental constraints associated with the area. Numerous pipeline corridors are planned and this report addresses those corridors on lot 20W32, reviewed in several months of field inspections from March to May 2011. The pipeline corridors addressed in this report are F3, F4, F7, F8, F10, F15, F16, F19, F20, F21, F24, F163, F164, F236, F292, T3, and a road upgrade corridor.

1.2 Purpose of Report

The purpose of this report is to provide an ecological assessment of the proposed development area and identify any potential environmental constraints to the development.

2. Methodology

2.1 Desktop Methodology

Areas of development have been projected on various maps as provided by Santos. These maps include Regional Ecosystem (RE) mapping, Environmentally Sensitive Areas (ESA) mapping, drainage mapping and aerial photography. Where available ahead of time, these resources were reviewed to determine areas of focus for the field inspection.

It is important to note that throughout this report areas of remnant vegetation are referred to as 'endangered', 'of concern' and 'no concern at present' regional ecosystems. The classification used for this report is based on the 'biodiversity status' of the vegetation not the 'Vegetation Management Act status' of the vegetation. This is important as some areas mapped on the RE mapping (which used the VMA status) are categorised as 'of concern' but are referred to in this report as 'endangered'.

2.2 Field Methodology

The proposed corridors were inspected by eight (8) Aurecon ecologists (Jane Stark, Vanessa Boettcher, Grant Paterson, Sarah Glauert, Chris Schell, Cassandra Arkinstall, Hayley Poole and Leesa Lethebridge) between 1 March and 4 May 2011. The inspections aimed to assess the existing vegetation communities and habitat value of the proposed clearing within the pipeline corridors as well as verifying regional ecosystem (RE) mapping as produced by the Department of Environment and Resource Management (DERM).

GIS layers of the proposed corridor locations and environmental constraints mapping (eg Regional Ecosystem Mapping, Ecologically Significant Area Mapping) and high resolution aerial photography were uploaded onto a toughbook (C5 mobile clinical assistant CFT-001 – Motion computing) with an integrated GPS to facilitate the detection of boundaries whilst traversing the site. Two handheld Garmin GPS (GPSmap 76) were also used in the inspection.

The corridors were 100m wide and of varying lengths. The ground-truthing of these sites included undertaking detailed flora species observations including sampling of unknown flora. All flora species known to be of conservation significance (such as endangered, vulnerable, near threatened or Type A species under the *Nature Conservation Act 1992* or endangered, vulnerable or rare species under the *Environment Protection and Biodiversity Conservation Act 1999*) were recorded by GPS. Fauna observations were also recorded during the inspections.

A complete list of flora species observed in lot 20WT32 has been included in **Appendix A**.

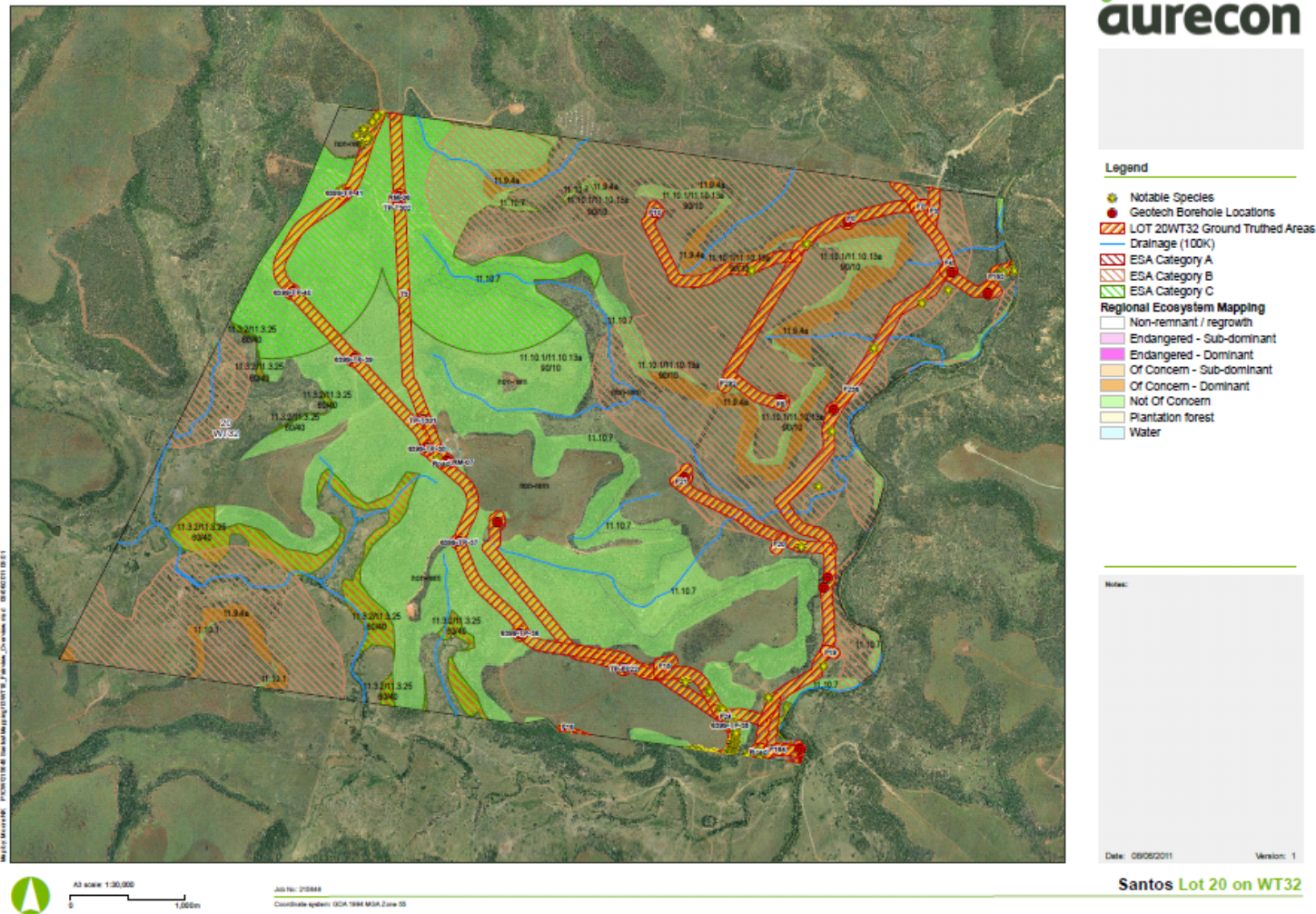


Figure 1 Overview of ground-truthed corridors on lot 20WT32 with associated RE and ESA mapping, and notable species

3. Ecological Assessment

3.1 Corridor F3

Corridor F3 traverses Fairview lots 5WT217, 6CP908635 and 20WT32, as shown in Figure 2. The entirety of this corridor has been discussed in the Aurecon report to Santos entitled "20110601_Fairview_Lot5_Ecological Investigation.doc", and as such, will not be discussed in detail in this report. Figure 3 shows the portion of corridor F3 that occurs on lot 20WT32. No EVNT or Type A species occur in this portion, and it is mapped as category B ESA, due to its proximity to an area of endangered RE 11.9.4a Semi-Evergreen Vine Thicket, which occurs to the west of the corridor.

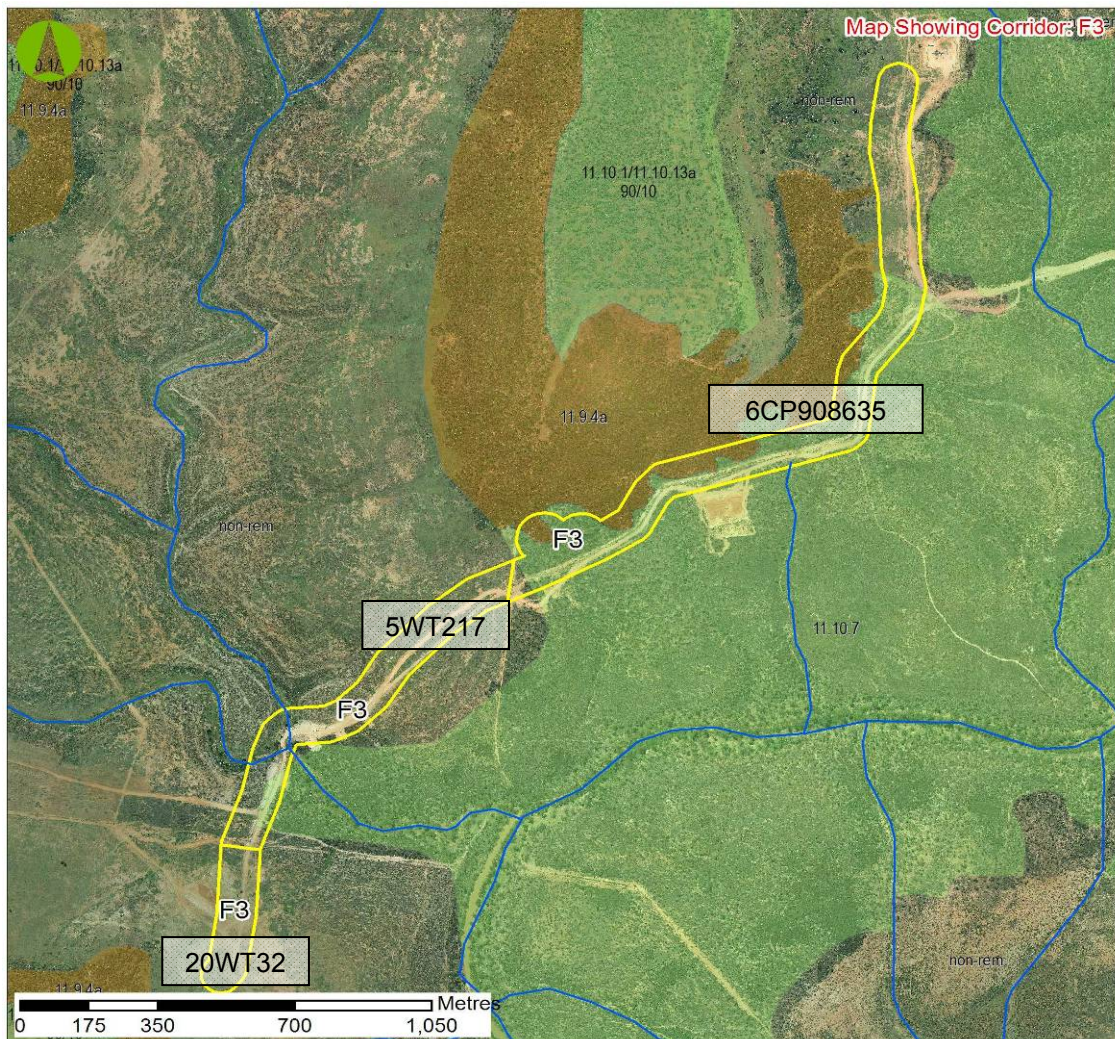


Figure 2 Aerial photograph of proposed corridor F3, showing lots that it occurs on

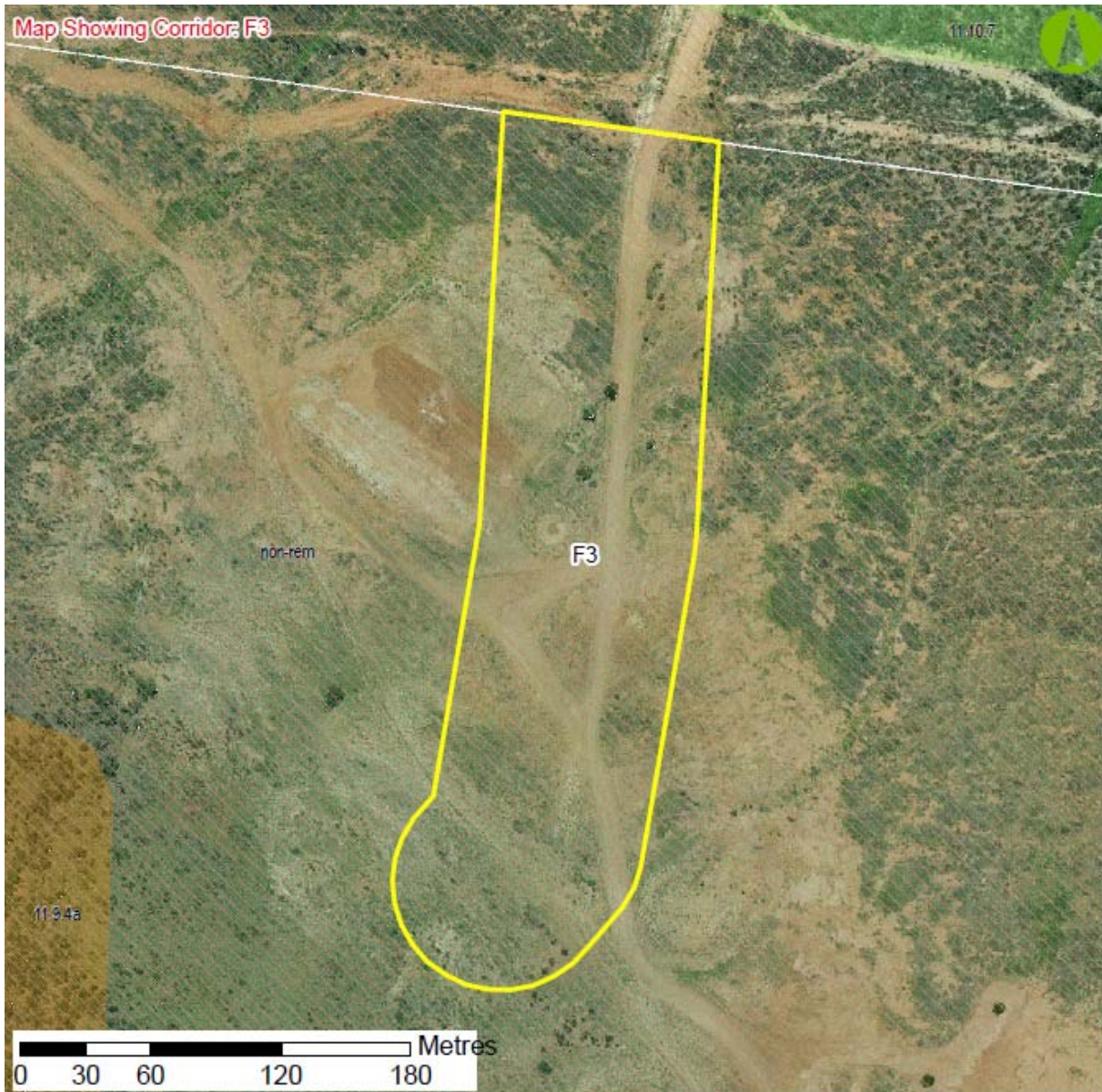


Figure 3 Aerial photograph of portion of proposed corridor F3 that occurs on lot 20WT32, with overlaid RE and ESA mapping

3.2 Corridor F4

Corridor F4 traverses Fairview lots 5WT217 and 20WT32, as shown in Figure 4. The entirety of this corridor has been discussed in the Aurecon report to Santos entitled "20110601_Fairview_Lot5_Ecological Investigation.doc", and as such, will not be discussed in detail in this report. Figure 5 shows the portion of corridor F4 that occurs on lot 20WT32. No EVNT or Type A species occur in this section of the corridor, and the majority of the portion is mapped as category B ESA, due to endangered RE 11.9.4a Semi-Evergreen Vine Thicket, which occurs to the west of the corridor.

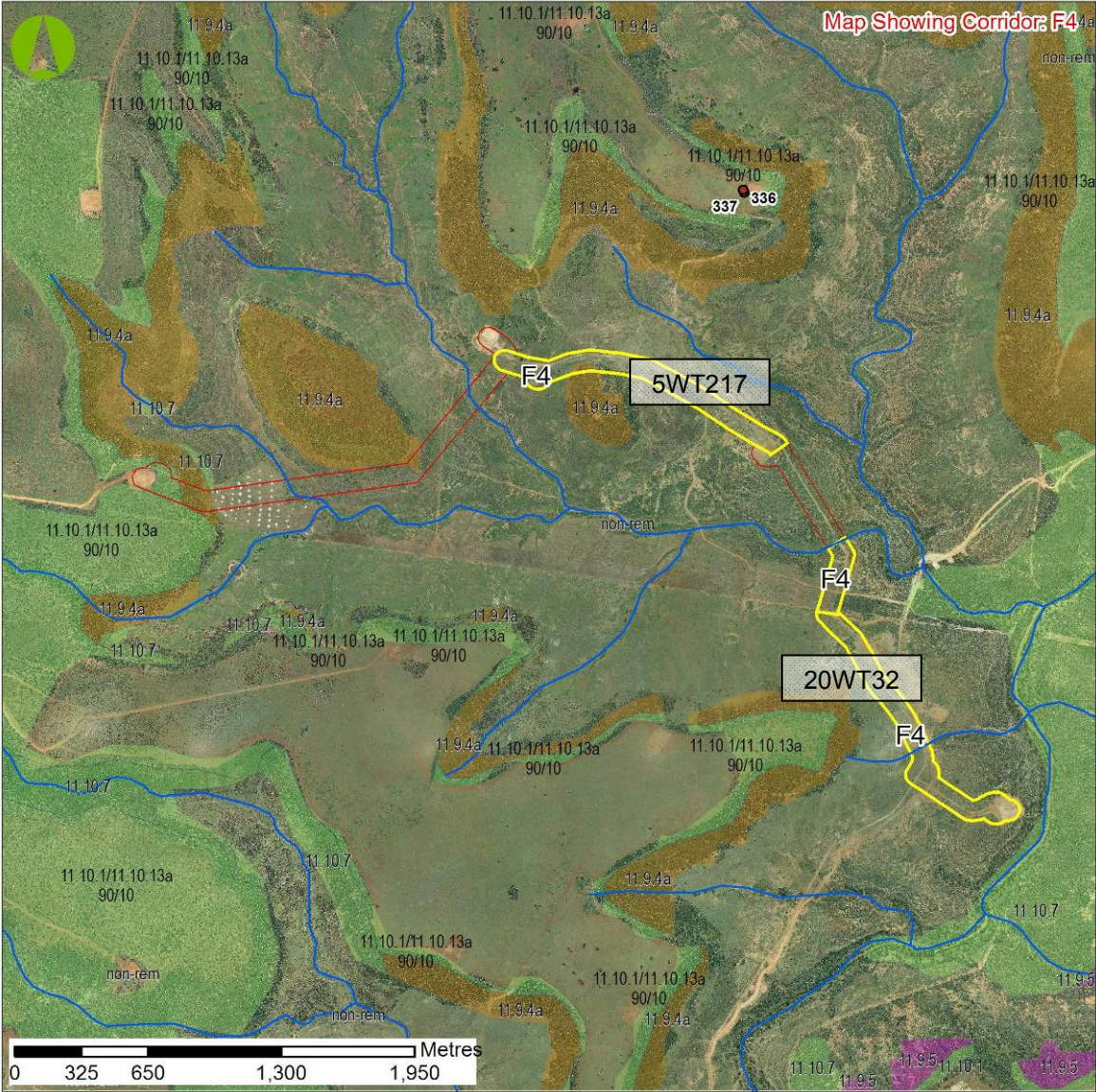


Figure 4 Aerial photograph of proposed corridor F4, showing lots that it occurs on

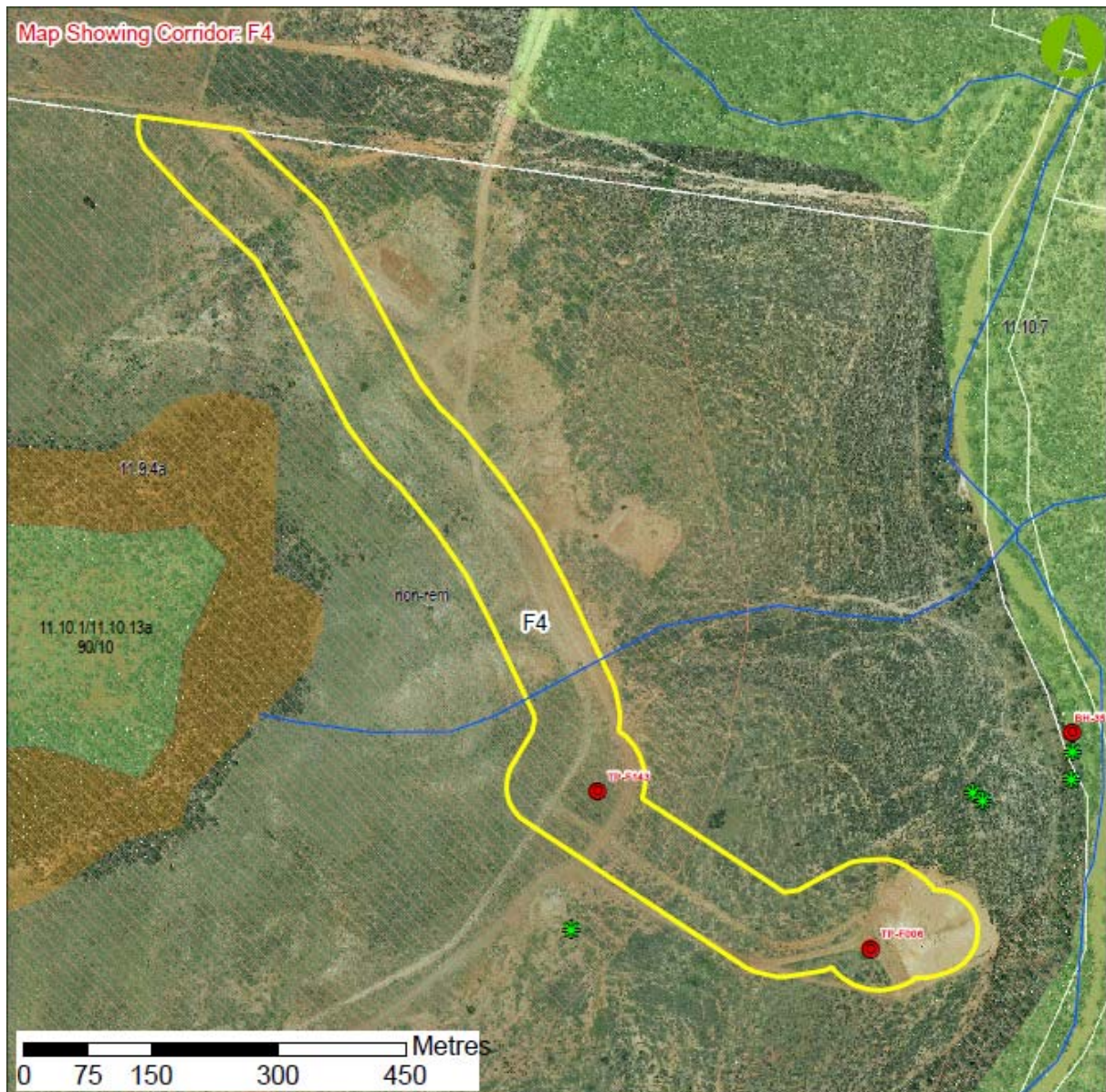


Figure 5 Aerial photograph of portion of proposed corridor F4 that occurs on lot 20WT32, with overlaid RE and ESA mapping

3.3 Corridor F5

General

Proposed corridor F5 is located predominantly within an area of non-remnant vegetation, as shown in Figure 6. A small area within the southern portion of the corridor footprint is located within an RE mapped as 'no concern at present' (RE 11.10.1/11.10.13). Adjacent to this, an 'endangered' RE (11.9.4) is mapped as occurring on the fringe of the proposed corridor. RE 11.9.4 is also listed as 'endangered' under the EPBC Act and is a Category B ESA. As a result of its proximity (ie 100m) to the endangered RE, much of this corridor is mapped as a Category B ESA.

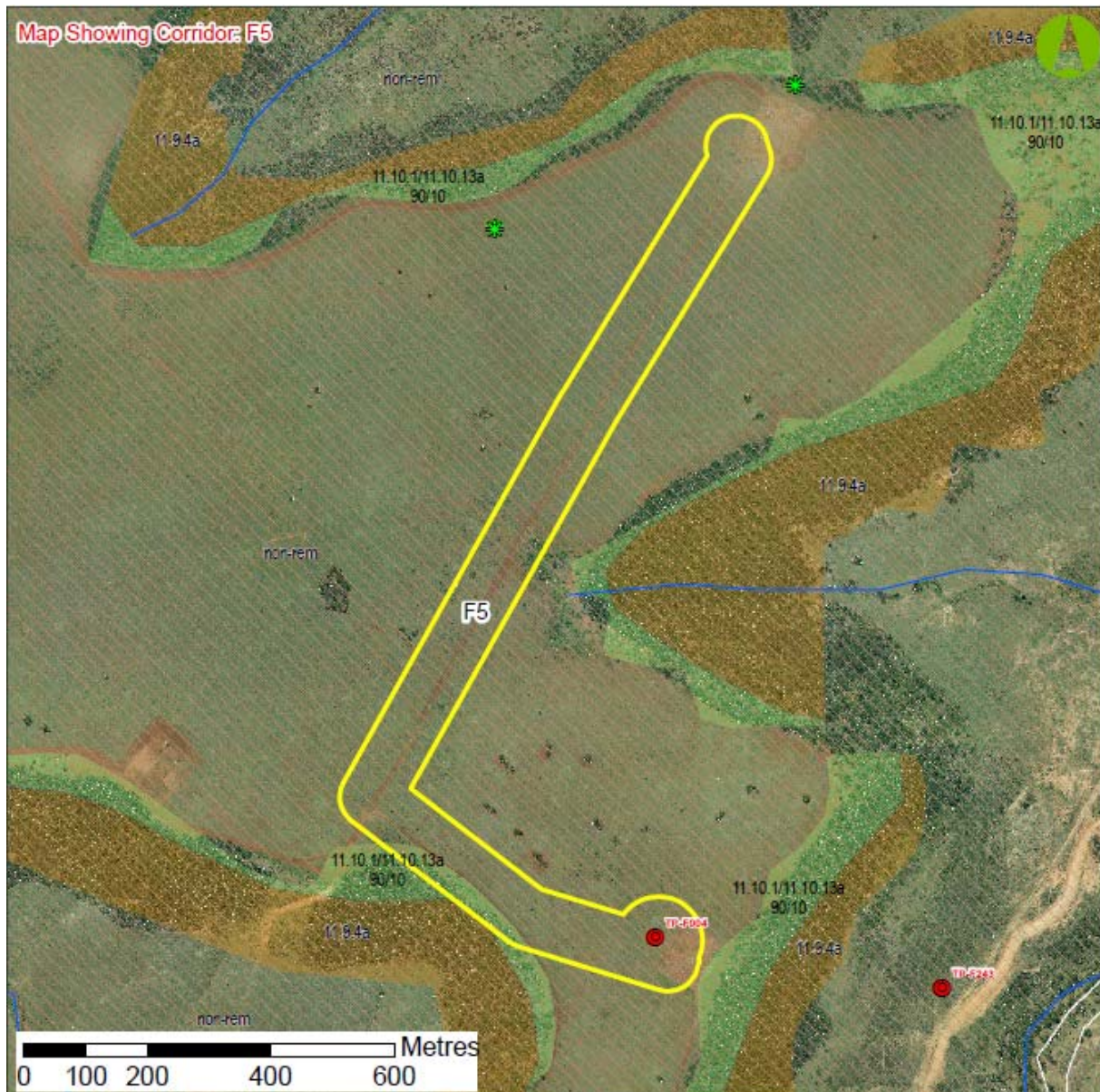


Figure 6 Aerial photograph of proposed corridor F5 with overlaid RE and ESA mapping

Floristics

Corridor F5 occurs predominantly within an area which has been historically cleared for agricultural purposes. These areas are dominated by Buffel grass and other exotic species. Woody vegetation is typically sparse, though dominated by Pretty wattle (*Acacia decora*), with occurrences of regrowth Narrow-leaved ironbark (*Eucalyptus crebra*) and juvenile Brigalow (*Acacia harpophylla*). Very few mature trees are present within this corridor.

No species of conservation significance under the provisions of the NC Act and/or the EPBC Act were observed within the area proposed for disturbance.

Habitat Value

The habitat value of Corridor F5 is low, as a result of its highly disturbed state and lack of structural complexity. This site generally lacks important habitat features such as termite mounds, hollow-

bearing trees, fissured bark and fallen woody debris. Accordingly, the fauna utilising resources in this area are most likely to be limited to common, generalist species that are able to adapt to significant habitat disturbances (e.g. House mouse [*Mus musculus*], macropods). Common birds of prey known from the area (e.g. Wedge-tailed eagle [*Aquila audax*] and Nankeen kestrel [*Falco cenchroides*]) would also be expected to utilise this site for foraging purposes.

3.4 Corridor F7

General

Corridor F7 is located within an area historically cleared for agricultural purposes, and currently utilised for cattle grazing (Figure 7). No remnant vegetation is mapped as occurring within the bounds of the corridor. However, as a result of its close proximity (ie <100 m) to an 'endangered' RE, Corridor F7 occurs entirely within a Category B ESA (see Figure 1).

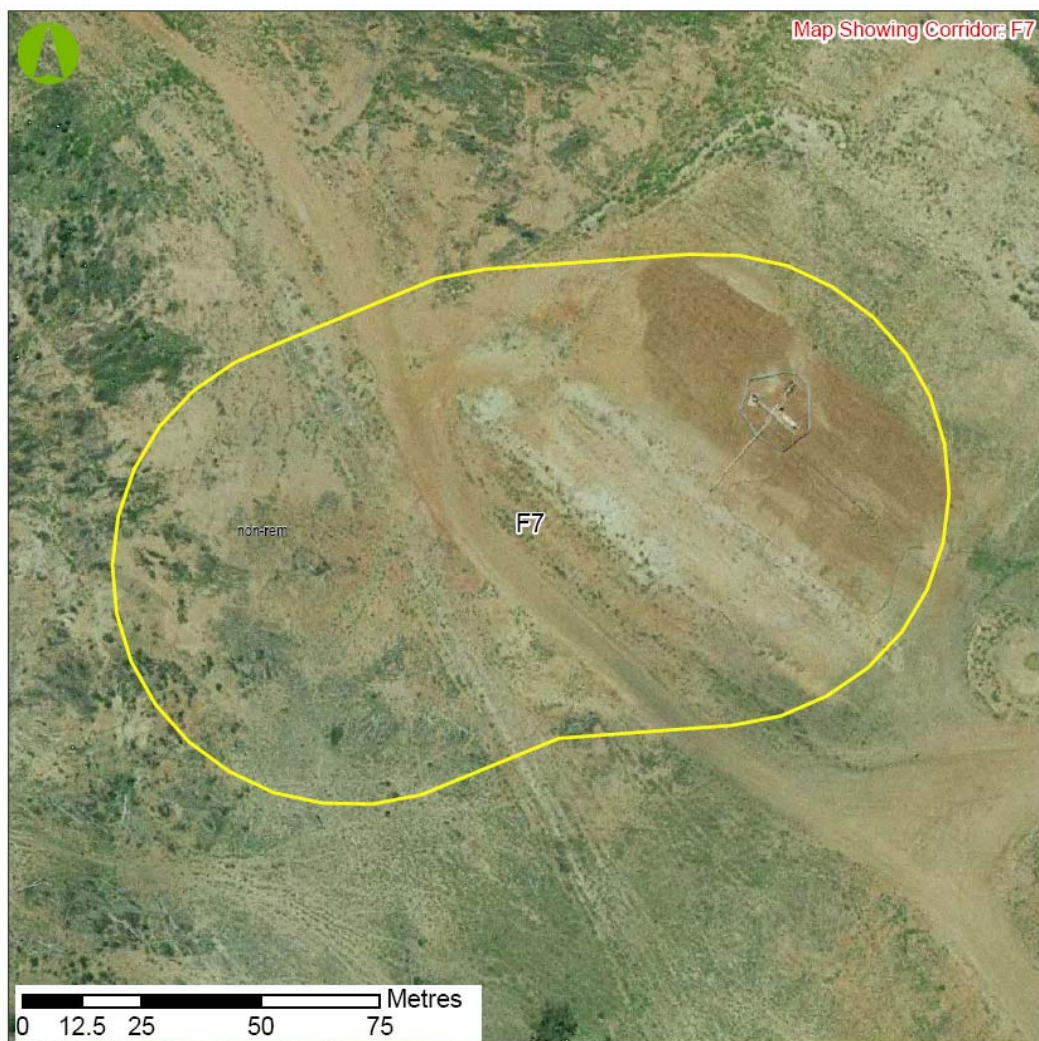


Figure 7 Aerial photograph of proposed corridor F7 with overlaid RE mapping

Floristics

Corridor F7 is highly disturbed and dominated by exotic pasture grasses, including Buffel grass. No remnant vegetation occurs within the corridor as a result of clearing. Regrowth *E. crebra* occurs sporadically throughout the corridor.

No species of conservation significance under the provisions of the NC Act and/or the EPBC Act were observed within the area proposed for disturbance.

Habitat Value

No incidental fauna were recorded within or adjacent to Corridor F7.

Habitat features associated with Corridor F7 are limited to dense groundcover vegetation (ie grassy tussocks). As a result, the habitat value of the site is low. This site generally lacks important habitat features such hollow-bearing trees, fissured bark, fallen woody debris and shrubs. Accordingly, the fauna utilising resources in this area are most likely to be limited to common, generalist species that are able to adapt to significant habitat disturbances (e.g. House mouse [*Mus musculus*], macropods). Common birds of prey known from the area (e.g. Wedge-tailed eagle [*Aquila audax*] and Nankeen kestrel [*Falco cenchroides*]) would also be expected to utilise this site for foraging purposes.

3.5 Corridor F8

General

Proposed corridor F8 is mapped entirely as non-remnant vegetation, as shown in Figure 8. The corridor bisects remnant 'no concern at present' vegetation (RE 11.10.1/11.10.13) and 'endangered' RE (11.9.4). The proposed disturbance also runs parallel to this remnant strip of RE 11.9.4, and as such the entirety of corridor F8 is mapped as Category B ESA.

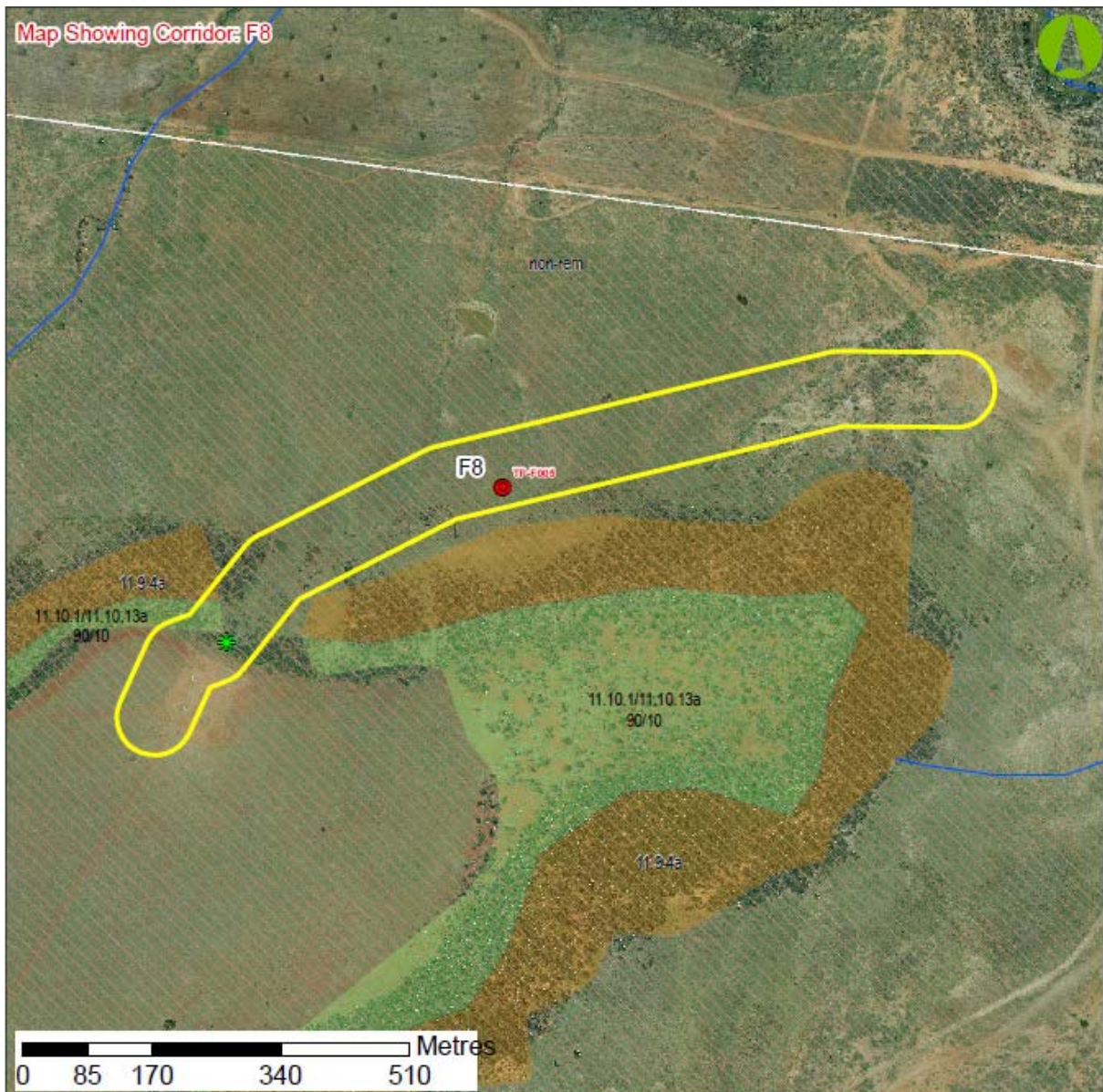


Figure 8 Aerial photograph of proposed corridor F8 with overlaid RE and ESA mapping

Floristics

Corridor F5 occurs predominantly within an area which has been historically cleared for agricultural purposes. These areas are dominated by Buffel grass and other exotic species. Woody vegetation is typically sparse, and similar to that of corridor F5, with scattered *Acacia decora*, *Eucalyptus crebra* and *Acacia harpophylla* regrowth. Very few mature trees are present within this corridor.

One *Brachychiton australis* was observed within the corridor and its location is provided in Table 3-1 below. This species is a Type A restricted plant under the NC Act.

Table 3-1 Species of conservation significance in corridor F8

Species name	Easting (GDA 94, Zone 55J)	Northing (GDA 94, Zone 55J)
<i>Brachychiton australis</i>	0692830	7157281

Habitat Value

The habitat value of Corridor F8 is low, as a result of its highly disturbed state and lack of structural complexity. This site generally lacks important habitat features such as termite mounds, hollow-bearing trees, fissured bark and fallen woody debris. Accordingly, the fauna utilising resources in this area are most likely to be limited to common, generalist species that are able to adapt to significant habitat disturbances (e.g. House mouse [*Mus musculus*], macropods). Common birds of prey known from the area (e.g. Wedge-tailed eagle [*Aquila audax*] and Nankeen kestrel [*Falco cenchroides*]) would also be expected to utilise this site for foraging purposes.

3.6 Corridor F10

General

Corridor F10 is located predominantly within an area of non-remnant vegetation, at the top of a plateau. The corridor footprint infringes upon a small area mapped as remnant 'no concern at present' RE (11.10.1/11.10.13). Adjacent to this, an 'endangered' SEVT community (ie RE 11.9.4) is mapped as occurring on the fringe of the proposed corridor, characterised by a steep drop-off. Due to its proximity to RE 11.9.4, proposed corridor F10 is mapped entirely as a Category B ESA. Field investigations have concluded that the RE mapping (as illustrated in Figure 9) within and immediately adjacent to this corridor is accurate.

Table 3-2 Species of conservation significance in corridor F10

Species name	Easting (GDA 94, Zone 55J)	Northing (GDA 94, Zone 55J)
<i>Brachychiton rupestris</i>	692347	7157045
<i>Brachychiton australis</i>	692826	7157283

Corridor F10 is positioned parallel to a mapped SEVT community, which occurs throughout the steep cliff-face. Field investigations have identified a number of type A restricted species within this adjacent community in addition to a remnant stand of Brigalow.

Habitat Values

No incidental fauna were recorded within and or adjacent to Corridor F10.

Habitat features associated with Corridor F10 are predominately limited to dense groundcover vegetation (ie grassy tussocks). As a result, the habitat value of the site is considered to be low. This corridor typically lacks structural elements that are necessary to fulfil various functional roles for native fauna species. It generally lacks important habitat features such as hollow-bearing trees, termite nests, hollow-bearing logs, and leaf litter. Despite exhibiting limited structural complexity, this site adjoins large stands of remnant vegetation that are expected to be utilised as fauna movement corridors.

3.7 Corridor F15

General

Corridor F15 is located within an area historically cleared for agricultural purposes, and is currently utilised for cattle grazing (Figure 10). No remnant vegetation is mapped as occurring within the bounds of the corridor.

Floristics

Corridor F15 is highly disturbed and dominated by exotic pasture grasses, including Buffel grass. No remnant vegetation occurs within the corridor as a result of clearing. Regrowth *E. crebra* occurs sporadically throughout the corridor.

No species of conservation significance under the provisions of the NC Act and/or the EPBC Act were observed within the area proposed for disturbance.

Habitat Values

No incidental fauna was recorded within or adjacent to Corridor F15.

Habitat features associated with this corridor are limited to dense groundcover vegetation (ie grassy tussocks). As a result, the habitat value of the site is low. This site generally lacks important habitat features such hollow-bearing trees, fissured bark, fallen woody debris and shrubs. Accordingly, the fauna utilising resources in this area are most likely to be limited to common, generalist species that are able to adapt to significant habitat disturbances (e.g. House mouse [*Mus musculus*], macropods). Common birds of prey known from the area (e.g. Wedge-tailed eagle [*Aquila audax*] and Nankeen kestrel [*Falco cenchroides*]) would also be expected to utilise this site for foraging purposes.

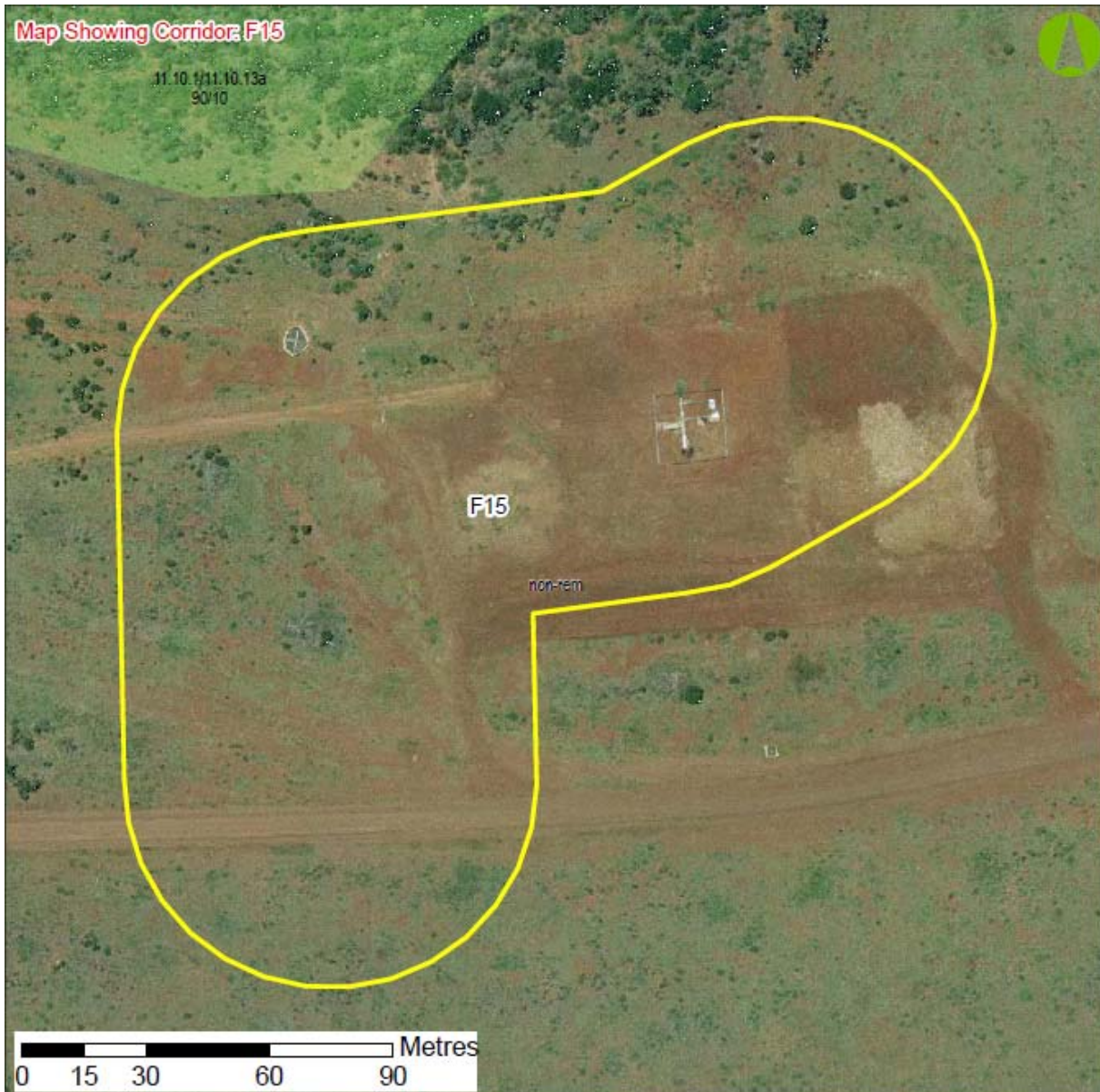


Figure 10 Aerial photograph of proposed corridor F15 with overlaid RE and ESA mapping

3.8 Corridor F16

General

Corridor F16 traverses Fairview lots 20WT32 and 13WT18, as shown in Figure 11. The entirety of this corridor has been discussed in the Aurecon report to Santos entitled '20110601_Fairview_Lot13WT18_Ecological Investigation.doc', and as such, will not be discussed in detail in this report. Figure 12 shows the portion of corridor F16 that occurs on lot 20WT32, which is mapped entirely as non-remnant vegetation. No EVNT or Type A species occur in this portion, nor do any ESAs.

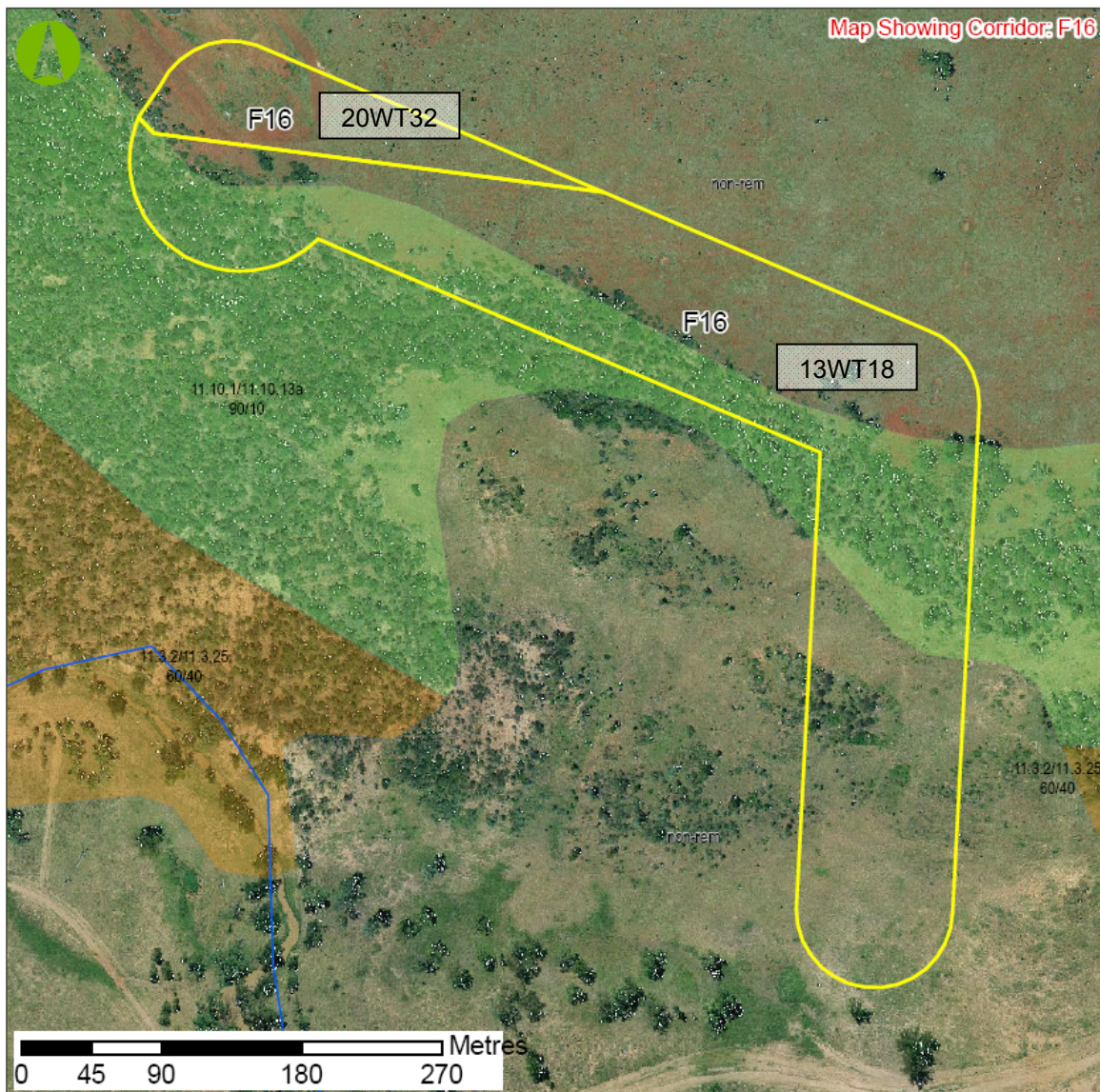


Figure 11 Aerial photograph of proposed corridor F16, showing lots that it occurs on

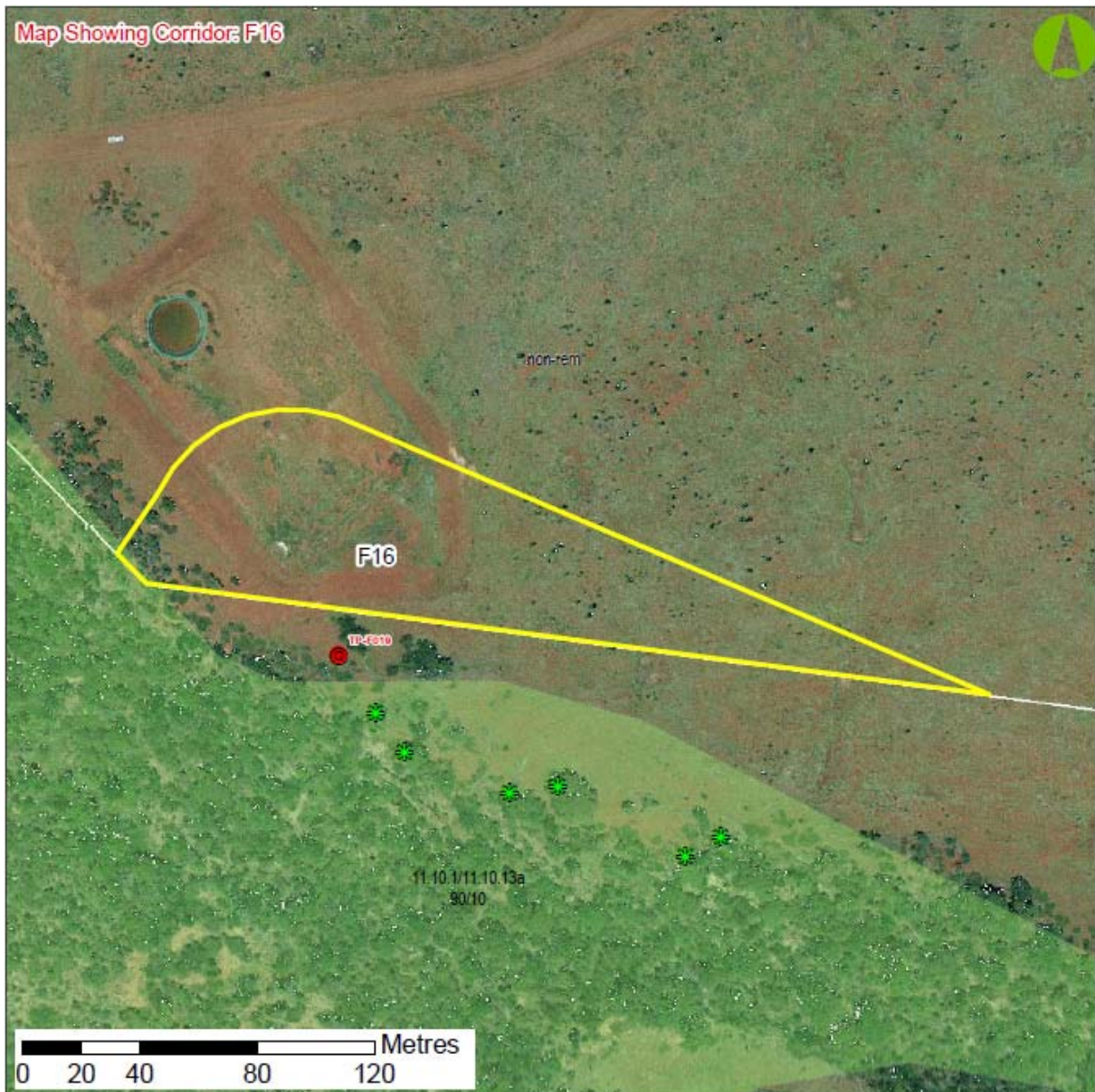


Figure 12 Portion of corridor F16 that occurs on lot 20WT32, with overlaid RE and ESA mapping

3.9 Corridor F19

General

Corridor F19 is a small area of approximately 150 metres in length, which encompasses a well pad adjoining corridor F21 (see Figure 1). It is mapped entirely as non-remnant vegetation, as shown in Figure 13. The corridor is heavily disturbed and has been historically cleared for grazing purposes.

No ESAs occur within corridor F19.

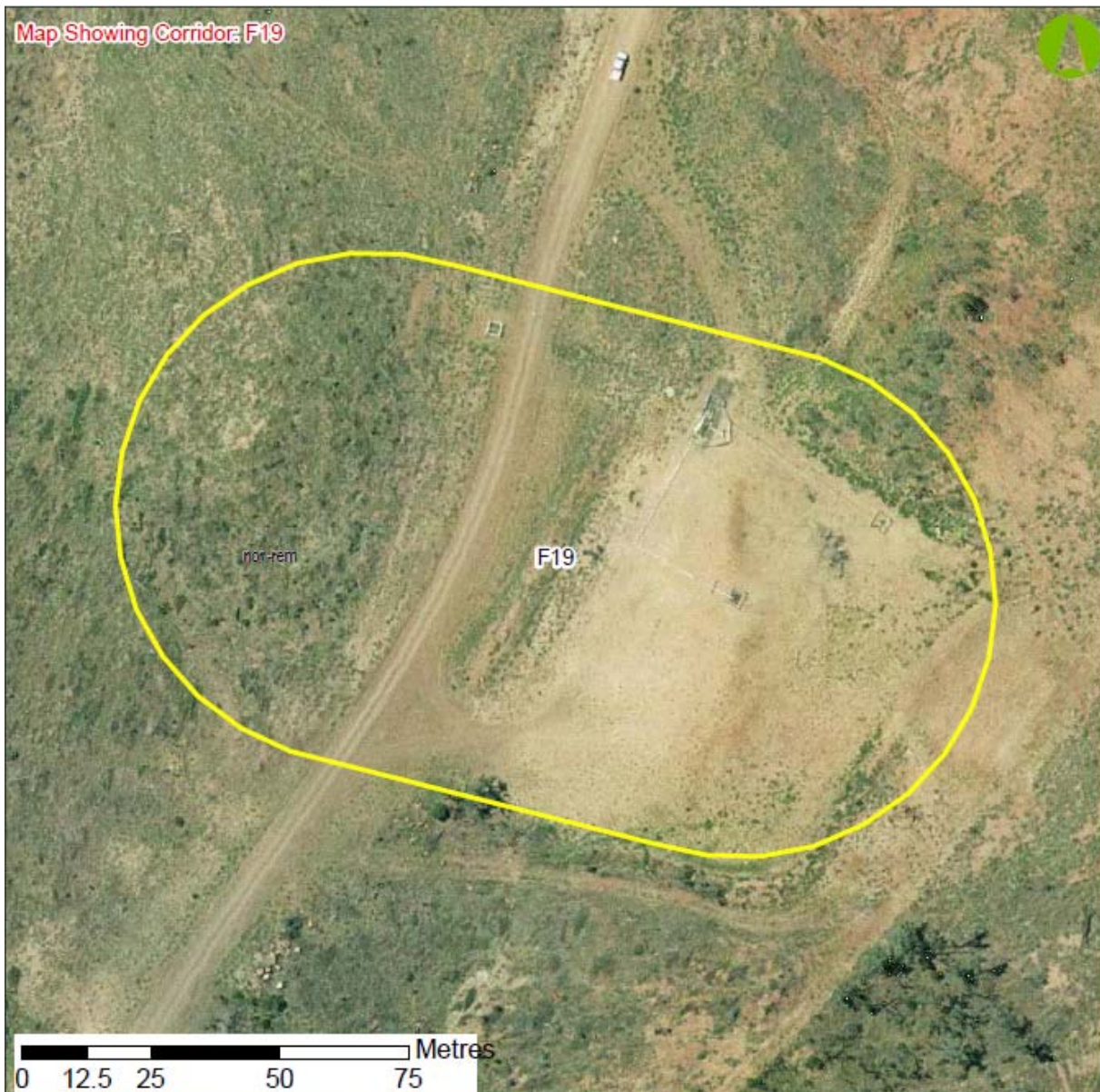


Figure 13 Aerial photograph of proposed corridor F19 with overlaid RE and ESA mapping

Floristics

Corridor is heavily disturbed and has been historically cleared for grazing purposes. The area is dominated by Buffel grass and other exotic species, with no mature trees.

No species of conservation significance under the provisions of the NC Act and/or the EPBC Act were observed within the area proposed for disturbance.

Habitat Values

No incidental fauna was recorded within or adjacent to Corridor F19.

Habitat features associated with this corridor are limited to dense groundcover vegetation (ie grassy tussocks). As a result, the habitat value of the site is low. This site generally lacks important habitat features such hollow-bearing trees, fissured bark, fallen woody debris and shrubs. Accordingly, the

fauna utilising resources in this area are most likely to be limited to common, generalist species that are able to adapt to significant habitat disturbances (e.g. House mouse [*Mus musculus*], macropods). Common birds of prey known from the area (e.g. Wedge-tailed eagle [*Aquila audax*] and Nankeen kestrel [*Falco cenchroides*]) would also be expected to utilise this site for foraging purposes.

3.10 Corridor F20

General

Corridor F20 is a small area of approximately 200 metres in length, which encompasses a well pad adjoining corridor F21 (see Figure 1). It is mapped entirely as non-remnant vegetation, as shown in Figure 14. The corridor is heavily disturbed and has been historically cleared for grazing purposes.

A category B ESA is mapped within a small section of the northern end of corridor F19, due to its proximity to endangered RE 11.9.4 SEVT, which occurs approximately 470 metres to the north.

Floristics

Corridor F20 is heavily disturbed and has been historically cleared for grazing purposes. The area is dominated by Buffel grass and other exotic species, with no mature trees.

No species of conservation significance under the provisions of the NC Act and/or the EPBC Act were observed within the area proposed for disturbance.

Habitat Value

No incidental fauna was recorded within or adjacent to Corridor F20.

Habitat features associated with this corridor are limited to dense groundcover vegetation (ie grassy tussocks). As a result, the habitat value of the site is low. This site generally lacks important habitat features such hollow-bearing trees, fissured bark, fallen woody debris and shrubs. Accordingly, the fauna utilising resources in this area are most likely to be limited to common, generalist species that are able to adapt to significant habitat disturbances (e.g. House mouse [*Mus musculus*], macropods). Common birds of prey known from the area (e.g. Wedge-tailed eagle [*Aquila audax*] and Nankeen kestrel [*Falco cenchroides*]) would also be expected to utilise this site for foraging purposes.

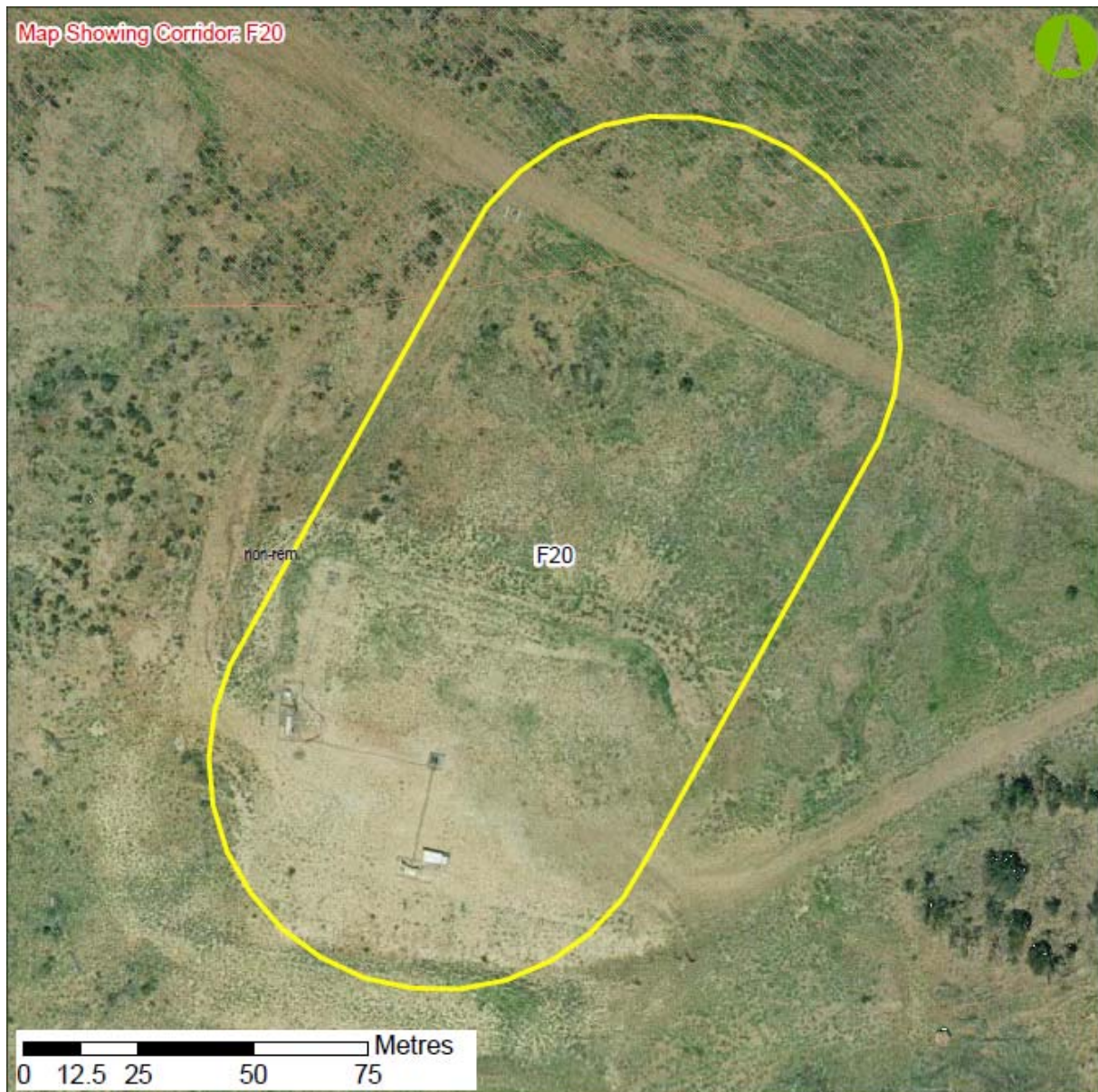


Figure 14 Aerial photograph of proposed corridor F20 with overlaid RE and ESA mapping

3.11 Corridor F21

General

Corridor F21 traverses Fairview lots 20WT32 and 13WT18, as shown in Figure 15. The majority of this corridor occurs on lot 20WT32 and as such, the entirety of the corridor will be discussed in this report.

Figure 16 shows the portion of corridor F16 that occurs on lot 20WT32 and Figure 17 shows the portion on lot 13WT18.

Corridor F21 is located predominately within non-remnant vegetation that has been historically cleared for grazing purposes. A small area of land towards the southern portion of the corridor intercepts a 'no concern at present' RE community. Adjacent to this, an 'of concern' RE (11.3.2/11.3.25) community is mapped. The northern section of the corridor on lot 20WT32 is mapped as category B ESA, due to its proximity to endangered RE 11.9.4 SEVT, which occurs approximately 300 metres to the north (see

Figure 16).

Two watercourses bisect the proposed corridor (Figure 15).

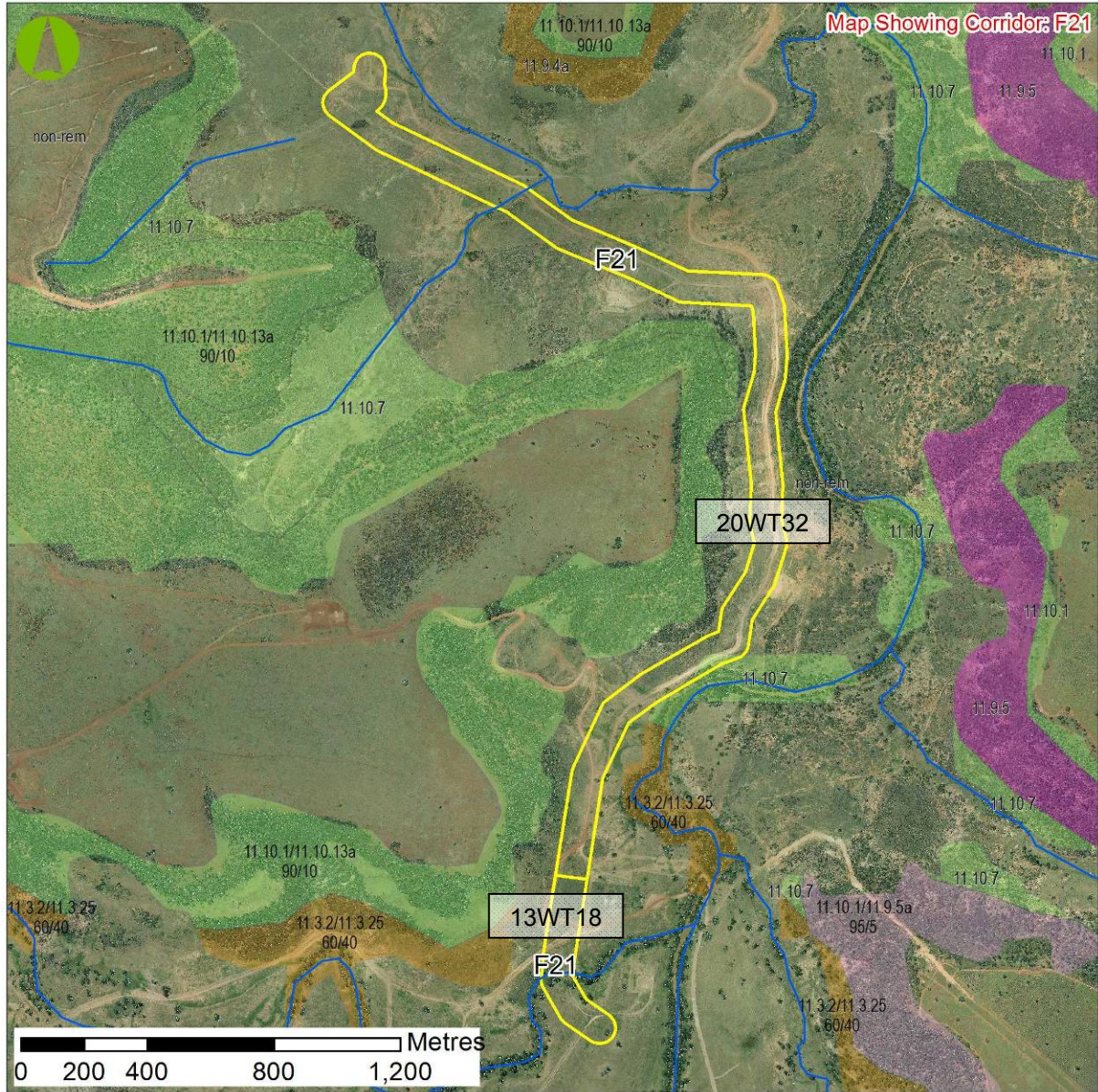


Figure 15 Aerial photograph of proposed corridor F21, showing lots that it occurs on

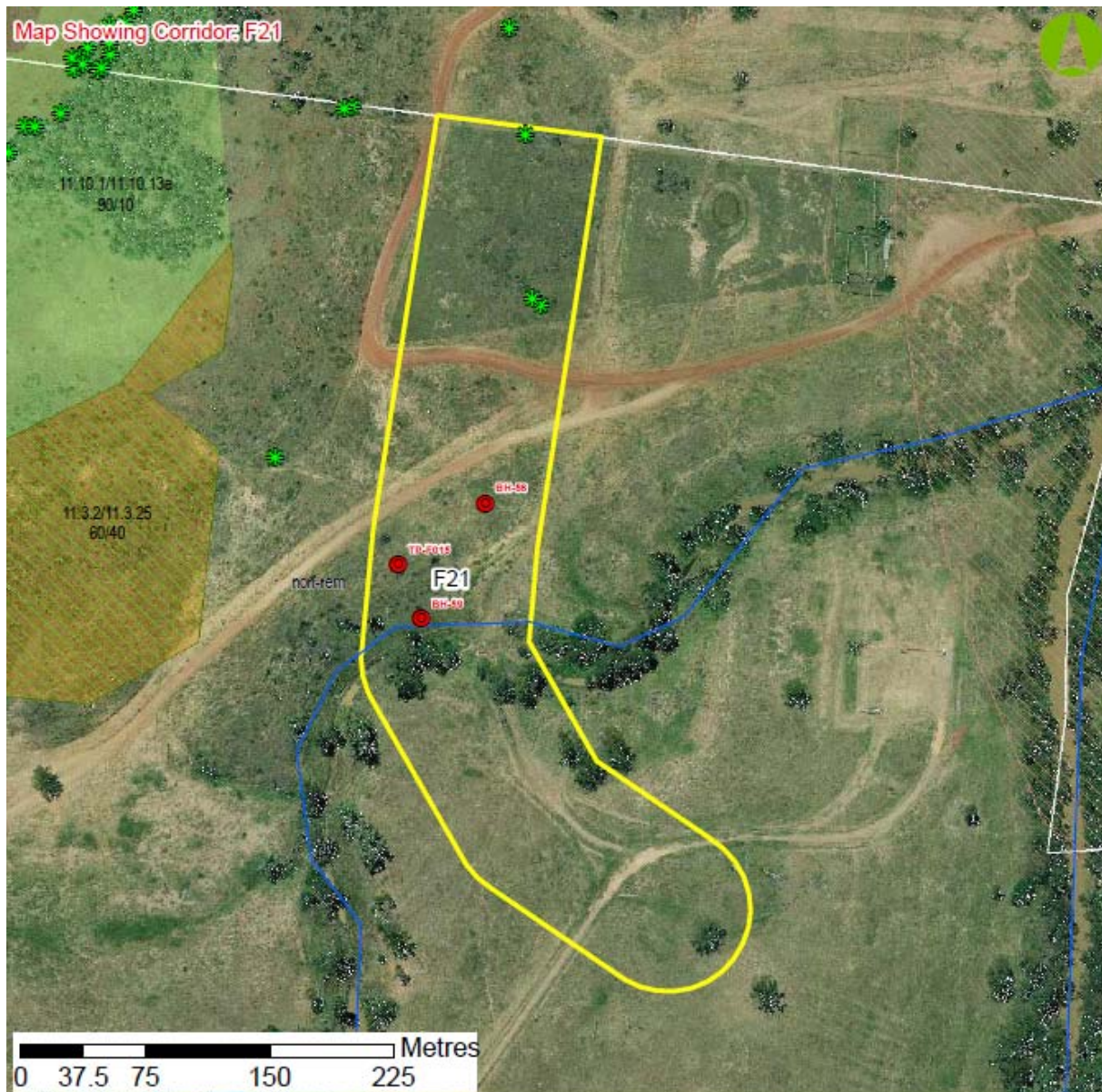


Figure 17 Aerial photograph of proposed corridor F21 on lot 13WT18 with overlaid RE and ESA mapping

Floristics

Corridor F21 occurs predominately within an area which has been historically cleared for agricultural purposes, and is non-remnant. These areas are dominated by Buffel grass and other exotic species. Woody vegetation is typically sparse, with few mature trees including River red gum (*Eucalyptus camaldulensis*), Poplar box (*E. populnea*), and Silver-leaved ironbark (*E. melanophloia*).

Corridor F21 encompasses a small area of 'no concern at present' remnant vegetation. Areas within the corridor that are mapped as remnant have been ground-truthed, and are accurately mapped.

Seven individual *Brachychiton rupestris* were detected within Corridor F21, and their location is given in Table 3-3. This is a Type A restricted species under the NC Act.

Table 3-3 Species of conservation significance in Corridor F21

Species name	Easting (GDA 94, Zone 55J)	Northing (GDA 94, Zone 55J)
<i>Brachychiton rupestris</i>	692422	7152635
<i>Brachychiton rupestris</i>	692417	7152639
<i>Brachychiton rupestris</i>	692432	7152733
<i>Brachychiton rupestris</i>	692412	7152739
<i>Brachychiton rupestris</i>	692416	7152639
<i>Brachychiton rupestris</i>	692402	7152804
<i>Brachychiton species</i>	692781	7154609

Habitat Values

No incidental fauna were recorded within and or adjacent to Corridor F21.

Habitat features associated with Corridor F21 are predominately limited to dense groundcover vegetation (ie grassy tussocks). As a result, the habitat value of the site is low. This corridor typically lacks structural elements that are necessary to fulfil various functional roles for native fauna species. It generally lacks important habitat features such as hollow-bearing trees, termite nests, fallen woody debris and leaf litter. Despite exhibiting limited structural complexity, this site adjoins large stands of remnant vegetation that are expected to be utilised as fauna movement corridors.

3.12 Corridor F24

General

Corridor F24 is located partially within historically cleared areas, dominated by pasture grasses and currently utilised for cattle grazing. The remainder of the corridor occurs within 'no concern at present' remnant vegetation (ie RE 11.10.1/11.10.13) (Figure 18).

One watercourse bisects the northern end of Corridor F24.

No ESAs are mapped within Corridor F24.

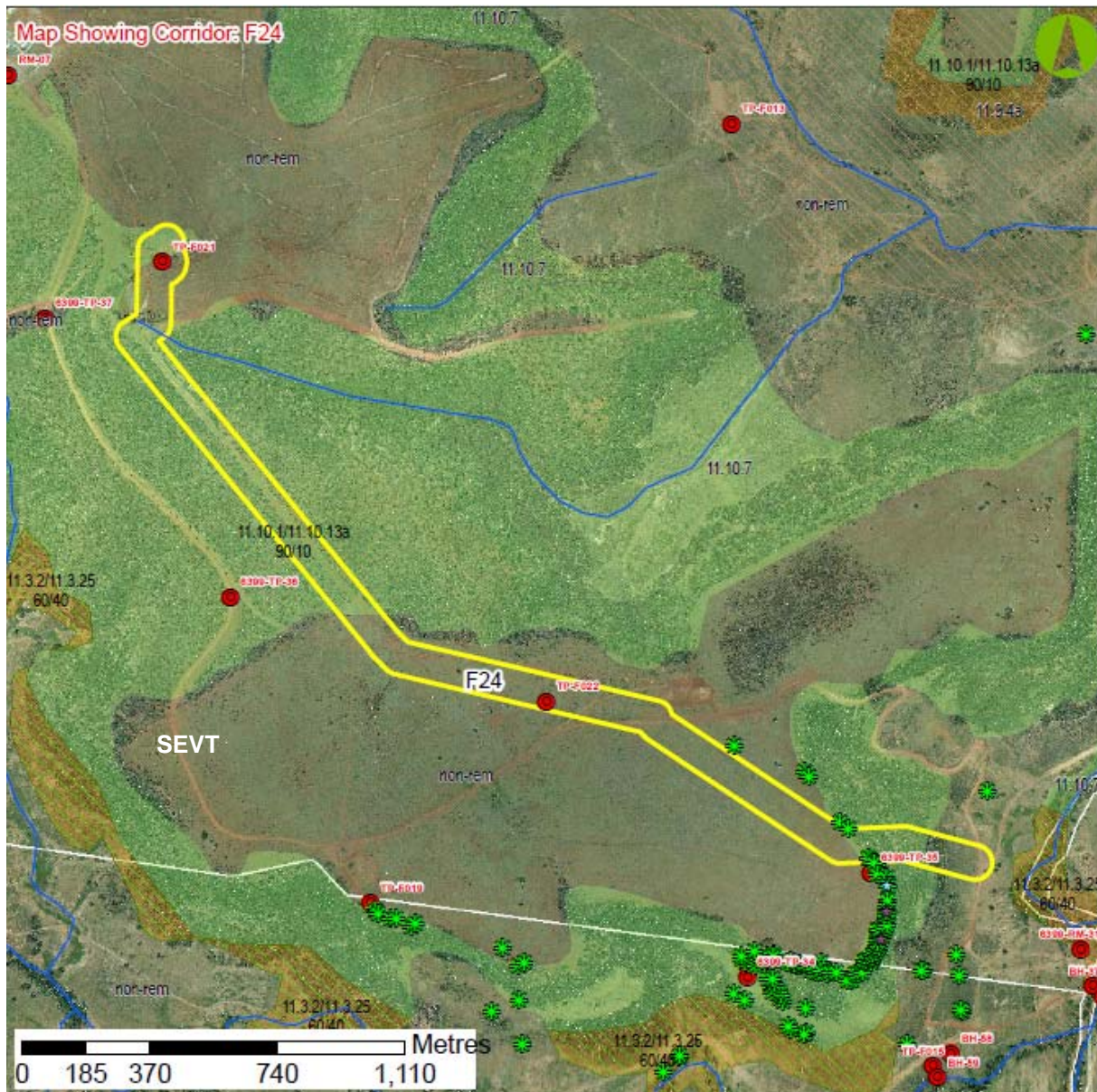


Figure 18 Aerial photograph of proposed corridor F24 with overlaid RE and ESA mapping

Floristics

Corridor F24 occurs partially within an area which has been historically cleared for agricultural purposes. These areas are dominated by Buffel grass and other exotic species. Woody vegetation is typically sparse, with few mature trees. Canopy tree species recorded within the non-remnant areas of the corridor include *E. crebra* and *E. populnea*.

Corridor F24 also traverses areas of 'no concern at present' remnant vegetation (RE 11.10.1/11.10.13). Areas within the corridor that are mapped as remnant have been ground-truthed, and are accurately mapped.

Three individual *Brachychiton rupestris* were detected within Corridor F24, and their location is given in Table 3-4. This is a Type A restricted species under the NC Act.

Table 3-4 Species of conservation significance in Corridor F24

Species name	Easting (GDA 94, Zone 55J)	Northing (GDA 94, Zone 55J)
<i>Brachychiton rupestris</i>	0692149	7153084
<i>Brachychiton rupestris</i>	0692149	7153084
<i>Brachychiton rupestris</i>	0691759	7153410

Habitat Values

No incidental fauna were recorded within and or adjacent to Corridor F24.

Habitat values of Corridor F24 are low to moderate. This corridor typically lacks structural elements that are necessary to fulfil various functional roles for native fauna species, such as hollow-bearing trees, termite nests, hollow logs, and leaf litter. Despite exhibiting limited structural complexity, this site adjoins large stands of remnant vegetation that are expected to be utilised as fauna movement corridors.

The ephemeral watercourse within the northern region of the corridor provides structural elements (e.g. submerged and semi-submerged logs/branches, and fringing riparian vegetation) important for the persistence of a range of aquatic species. The proximity to, and accessibility of, water is also important for many terrestrial species, particularly those whose life cycles are closely linked with these habitats, including numerous amphibians and small mammals.

3.13 Corridor F163

General

Corridor F163 traverses Fairview lots 20WT32 (Figure 20), 8AB200 (Figure 21) and 6CP908635 (Figure 22) as shown in the overview on Figure 19. The entirety of the corridor will be discussed in this report.

Corridor F163 on lots 20WT32 and 6CP908635 occur entirely within non-remnant vegetation, while the portion on lot 8AB200 traverses remnant vegetation of 'no concern at present' RE 11.10.7 and 'endangered' RE 11.9.5 (Brigalow).

The majority of corridor F163 is also mapped as category B ESA, due to its proximity to endangered RE 11.9.5.

Watercourses bisect corridor F163 on each of the three lots.

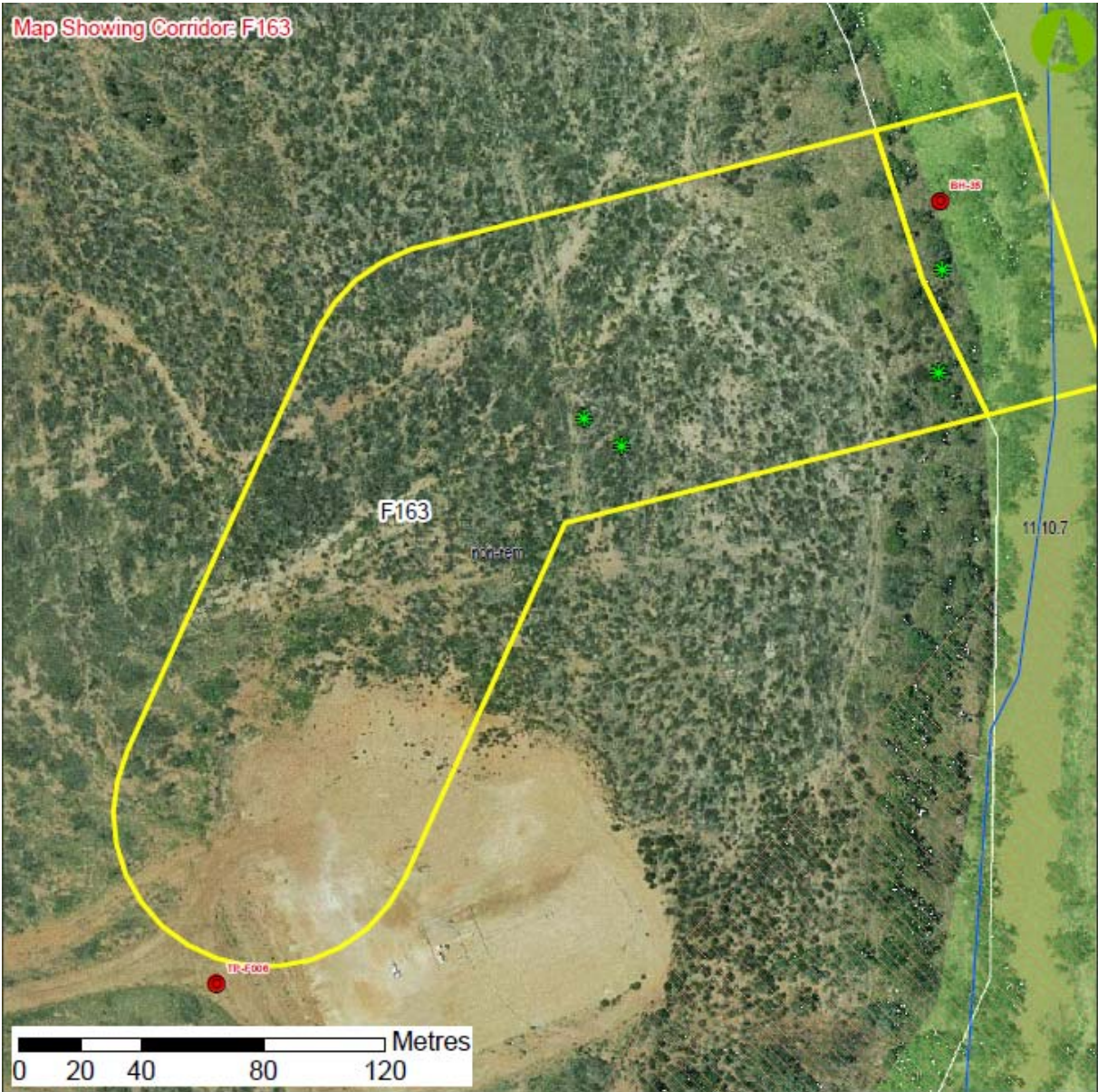


Figure 20 Aerial photograph of proposed corridor F163 on lot 20WT32 with overlaid RE and ESA mapping

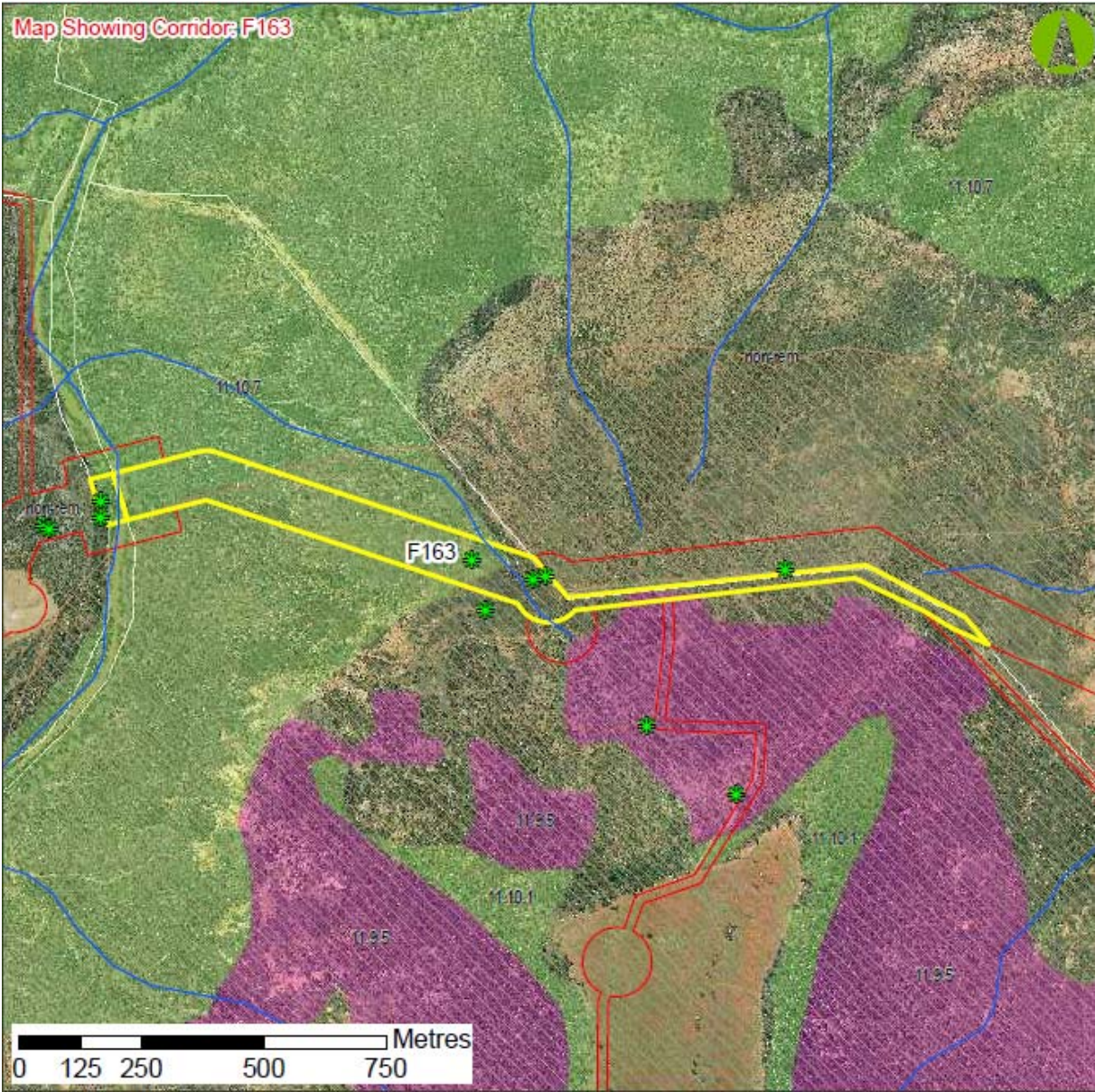


Figure 21 Aerial photograph of proposed corridor F163 on lot 8AB200 with overlaid RE and ESA mapping

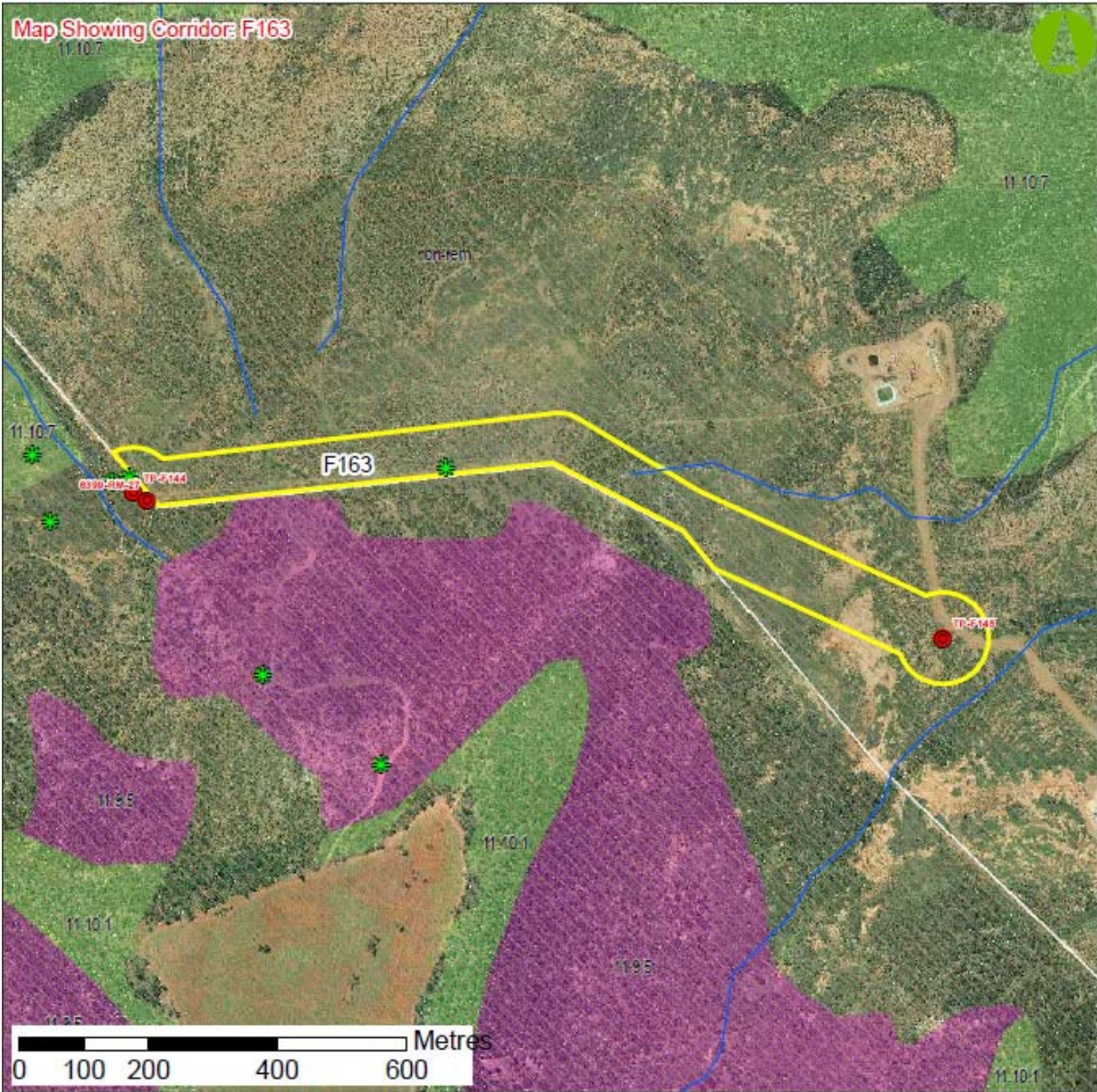


Figure 22 Aerial photograph of proposed corridor F163 on lot 6CP908635 with overlaid RE and ESA mapping

Floristics

Non-remnant areas on lot 20WT32 contain shrubby regrowth of a range of species, including *Acacia decora*, *Geijera parviflora*, *A. shirleyi*, *Grevillea striata* and *Alphitonia excelsa*, with a ground layer of mix of exotic and native grasses, herbs and forbs.

The non-remnant area on lot 8AB200 is correctly mapped as 'no concern at present' RE 11.10.7, characterised by *E. crebra* woodland on coarse-grained sedimentary rocks. Remnant areas adjacent to the watercourse on this lot also contain mature *E. tereticornis*, *Angophora floribunda* and *Casuarina cunninghamii*.

Non-remnant areas on lot 6CP908635 consist of regrowth *E. melanophloia* with a diverse shrub layer including *Callitris glaucophylla*, *Eremophila mitchelli*, *A. harphophylla*, *Geijera parviflora*, and *A. deanii*.

Eight individual plants of *Brachychiton* species were detected within Corridor F163, and their location is given in Table 3-5. All species of *Brachychiton* are Type A restricted plants under the NC Act.

Table 3-5 Species of conservation significance in corridor F163

Species	Lot on Plan	Easting (GDA 94, Zone 55J)	Northing (GDA 94, Zone 55J)
<i>Brachychiton populneus</i>	20WT32	694565	7157025
<i>Brachychiton populneus</i>	20WT32	694552	7157033
<i>Brachychiton populneus</i>	20WT32	694669	7157049
<i>Brachychiton rupestris</i>	6CP908635	696072	7156944
<i>Brachychiton populneus</i>	8AB200	695555	7156922
<i>Brachychiton populneus</i>	8AB200	695581	7156930
<i>Brachychiton populneus</i>	8AB200	695430	7156963
<i>Brachychiton populneus</i>	Road	694670	7157082

Habitat value

Habitat value along the length of corridor F163 is significant. Non-remnant areas contain abundant felled timber and shrubby diversity, and several finch nests were noted. Riparian corridors offered the greatest habitat value, with high floristic diversity, mature trees bearing hollows, and rocks and logs. A platypus (*Ornithorhynchus anatinus*) was noted in the creek on the lot 20/8 boundary. An incidental fauna list for corridor F163 is provided in Table 3-6 below.

Table 3-6 Incidental fauna list recorded in corridor F163

Species	Common name
Birds	
<i>Chenonetta jubata</i>	Australian Wood Duck
<i>Coturnix pectoralis</i>	Stubble Quail
<i>Coturnix ypsilophora</i>	Brown Quail
<i>Dacelo novaeguineae</i>	Laughing kookaburra
<i>Eolophus roseicapilla</i>	Galah
<i>Falco cenchroides</i>	Nankeen kestrel
<i>Manorina melanocephala</i>	Noisy miner
<i>Rhipidura leucophrys</i>	Willy Wagtail
<i>Struthidea cinerea</i>	Apostlebird
<i>Taeniopygia sp.</i>	Finch (nest)
Amphibians	
<i>Litoria caerulea</i>	Green Tree Frog
Reptiles	
<i>Boiga irregularis</i>	Brown Tree Snake
Mammals	
<i>Ornithorhynchus anatinus</i>	Platypus

3.14 Corridor F164

General

Corridor F164 traverses Fairview lots 20WT32 (Figure 24), and 8AB200 (Figure 25) as shown in the overview in Figure 23. The entirety of the corridor will be discussed in this report.

While the majority of Corridor F164 occurs within non-remnant vegetation, several areas of mapped remnant vegetation are affected by the proposed disturbance. The eastern end of the corridor portion on lot 20WT32 is mapped as remnant 'of concern' RE 11.3.2/11.3.25. This RE also affects the adjoining north-western end of the corridor on lot 8AB200. Corridor F164 also passes through a section of 'Endangered' (subdominant) RE 11.10.1/11.9.5 towards the northern end of the corridor on lot 8AB200.

The majority of corridor F164 is also mapped as category B ESA, due to its proximity to endangered RE 11.9.5.

Watercourses bisect corridor F164 on each of the two lots.

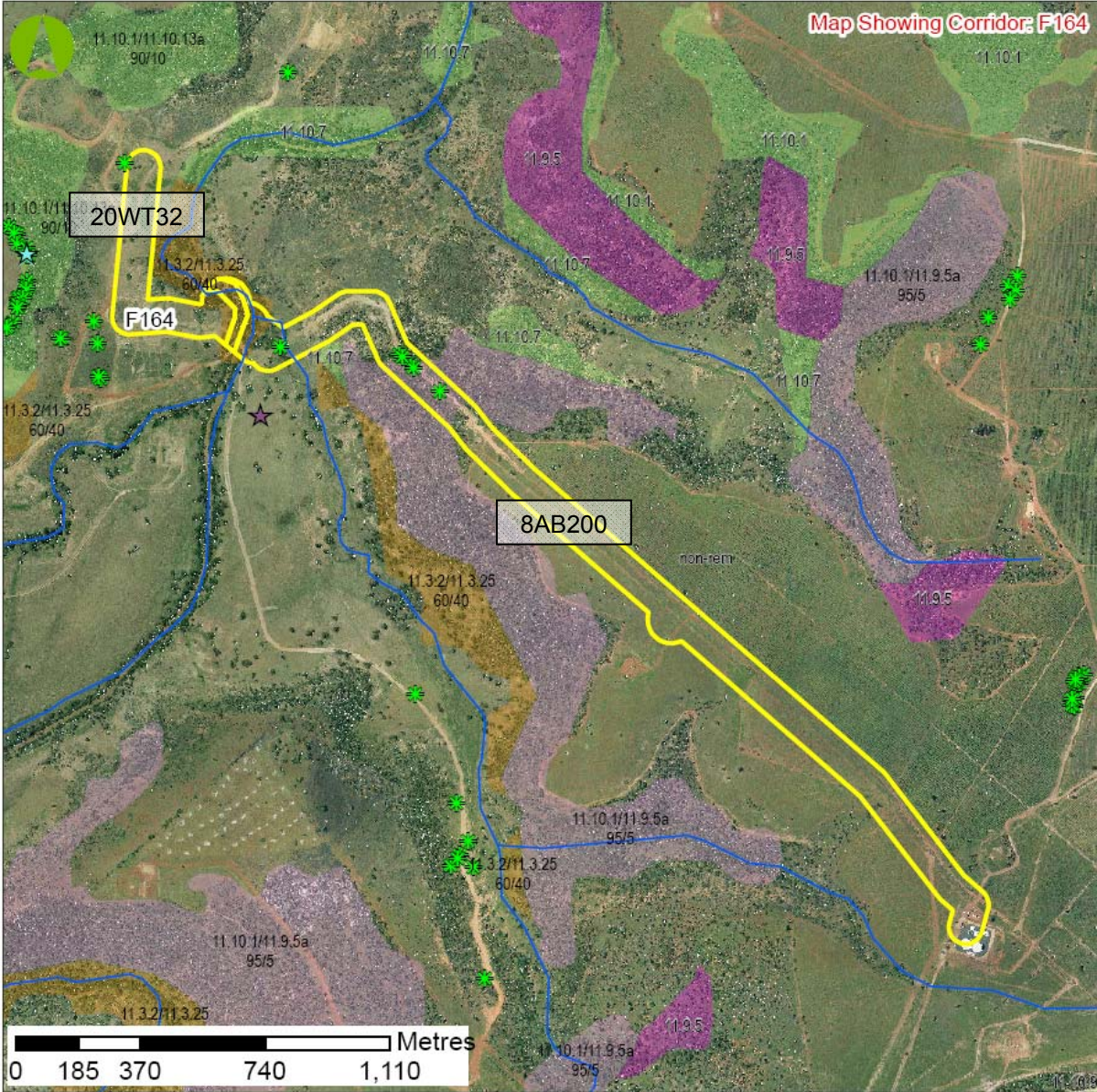


Figure 23 Aerial photograph of proposed corridor F164, showing lots on which it occurs

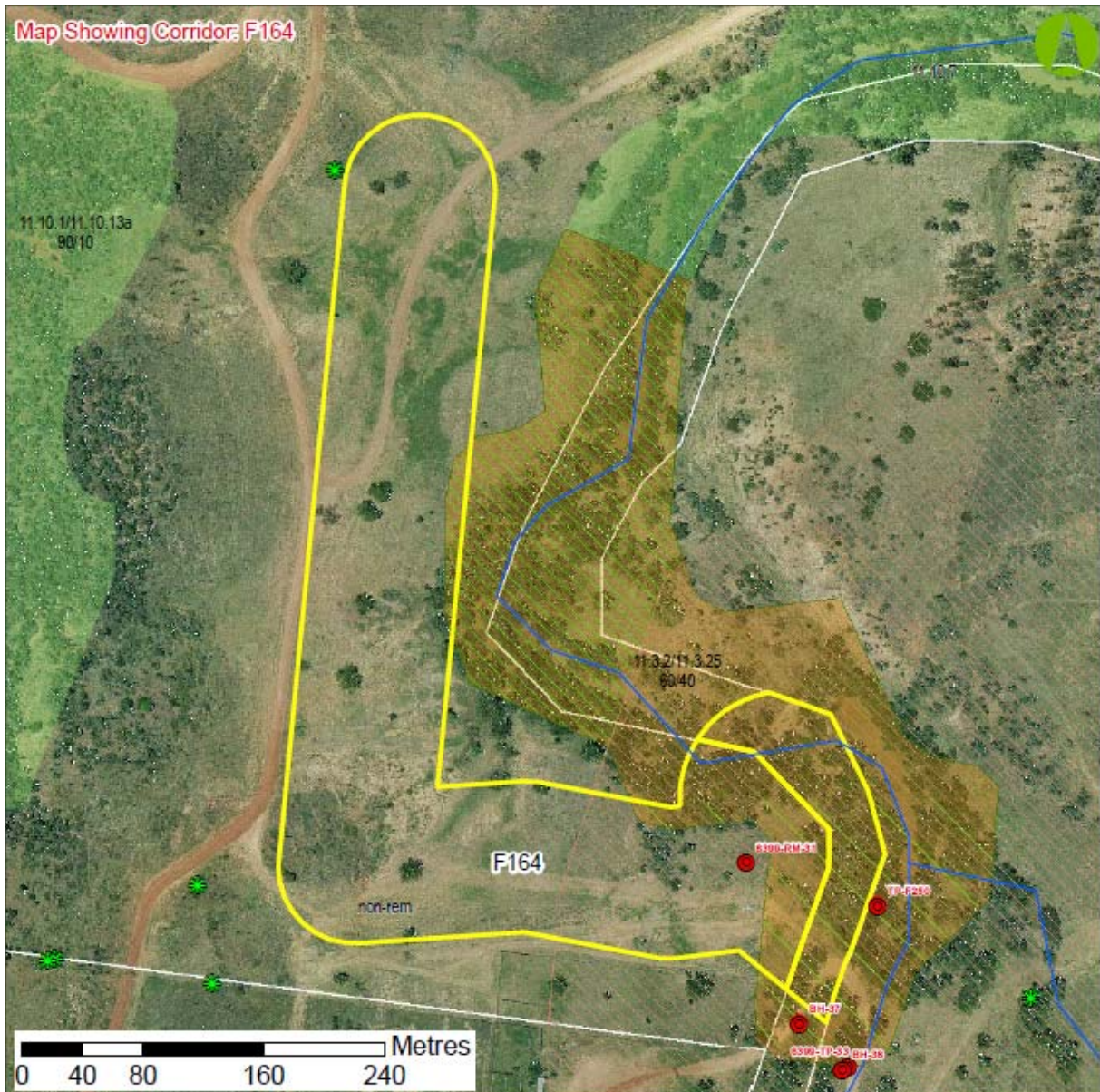


Figure 24 Aerial photograph of proposed corridor F164 on lot 20WT32 with overlaid RE and ESA mapping

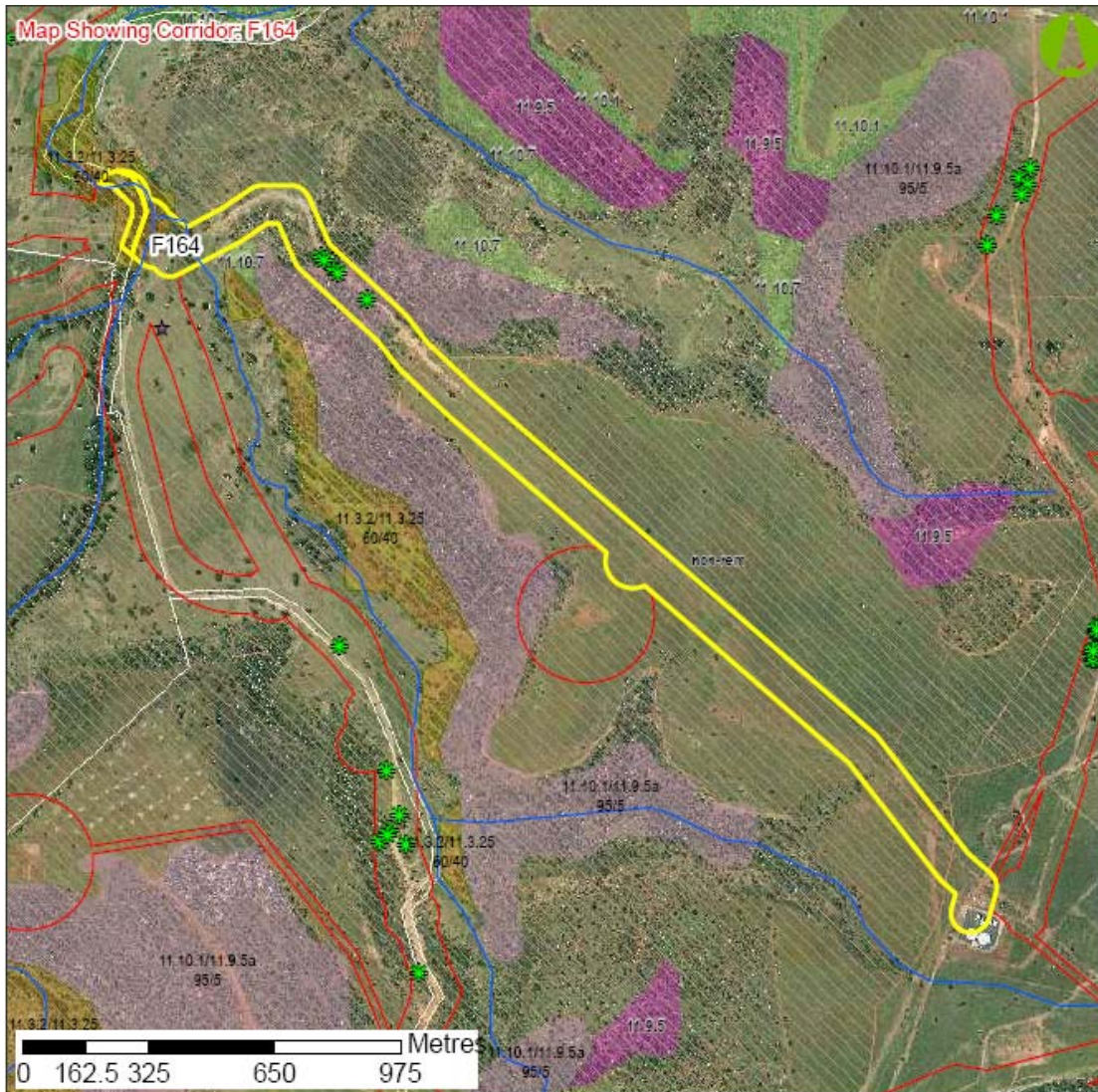


Figure 25 Aerial photograph of proposed corridor F164 on lot 8AB200 with overlaid RE and ESA mapping

Floristics

The remnant 'of concern' RE mapped as 11.3.2/11.3.25 at the western end of corridor F164 is correct. The area is characterised by mature *E. camaldulensis* and *Angophora floribunda* with scattered *E. populnea*. *E. melanophloia* grows in association with *Callitris glaucophylla* on the hill slope.

Six individual plants of *Brachychiton* species were detected within Corridor F164, and their location is given in Table 3-7. All species of *Brachychiton* are Type A restricted plants under the NC Act.

Table 3-7 Species of conservation significance in corridor F164

Species	Lot on Plan	Easting (GDA 94, Zone 55J)	Northing (GDA 94, Zone 55J)
<i>Brachychiton rupestris</i>	8AB200	693428	7152597
<i>Brachychiton rupestris</i>	8AB200	693352	7152667
<i>Brachychiton rupestris</i>	8AB200	693341	7152678

Species	Lot on Plan	Easting (GDA 94, Zone 55J)	Northing (GDA 94, Zone 55J)
<i>Brachychiton rupestris</i>	8AB200	693317	7152699
<i>Brachychiton rupestris</i>	8AB200	693310	7152707
<i>Brachychiton australis</i>	8AB200	692955	7152729

Habitat value

Within the non-remnant section, habitat features associated with this corridor are limited to dense groundcover vegetation (ie grassy tussocks). As a result, the habitat value of the site is low, and generally lacks important habitat features such hollow-bearing trees, fissured bark, fallen woody debris and shrubs. Accordingly, the fauna utilising resources in this area are most likely to be limited to common, generalist species that are able to adapt to significant habitat disturbances (e.g. House mouse [*Mus musculus*], macropods). Common birds of prey known from the area (e.g. Wedge-tailed eagle [*Aquila audax*] and Nankeen kestrel [*Falco cenchroides*]) would also be expected to utilise this site for foraging purposes.

The remnant area within corridor F164 contains high habitat value, with mature, hollow-bearing trees and large woody debris.

3.15 Corridor F236

General

Corridor F236 is mapped entirely as non-remnant vegetation, as shown in Figure 26. Remnant 'endangered' vegetation of RE 11.9.4 (SEVT) occurs on the slope 130 metres to the west of the corridor, and a watercourse of stream order 3 runs roughly parallel to the east, approximately 80 metres distant at its closest point.

The majority of corridor F236 is also mapped as category B ESA, due to its proximity to endangered RE 11.9.4.

The corridor crosses two watercourses of stream orders 1 and 2.

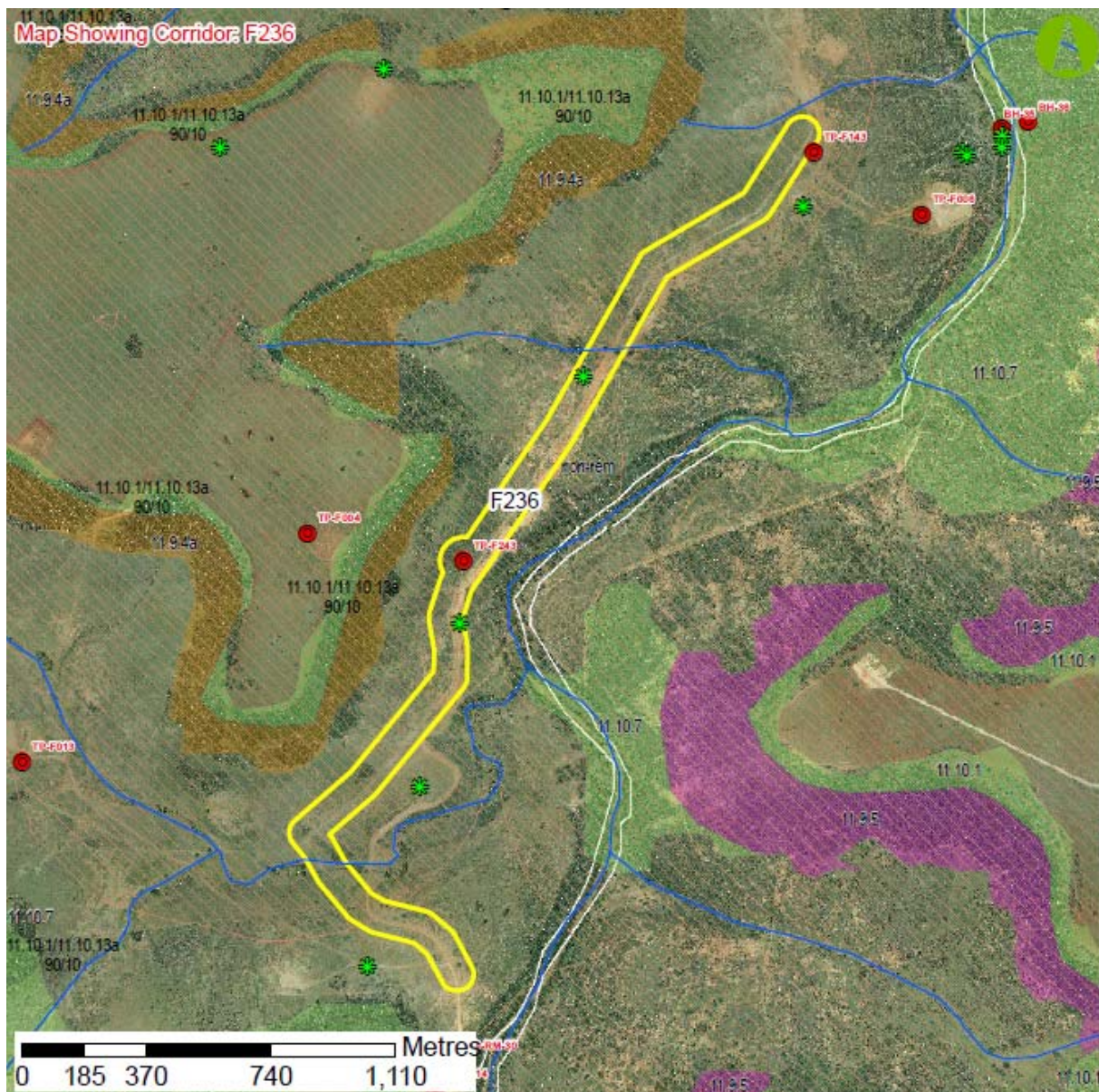


Figure 26 Aerial photograph of proposed corridor F236 with overlaid RE and ESA mapping

Floristics

Corridor F236 is heavily disturbed and has been historically cleared for grazing purposes, with several access tracks bisecting the corridor. The remnant 'endangered' RE 11.9.4 (SEVT) to the west of the corridor is correctly mapped.

Two individual plants of *Brachychiton populneus* were detected within Corridor F236, and their location is recorded in Table 3-8. This species is a Type A restricted plant under the NC Act.

Table 3-8 Species of conservation significance in corridor F236

Species	Easting (GDA 94, Zone 55J)	Northing (GDA 94, Zone 55J)
<i>Brachychiton populneus</i>	693054	7155630
<i>Brachychiton populneus</i>	693424	7156364

Habitat value

Habitat features associated with this corridor are limited to dense groundcover vegetation (ie grassy tussocks). As a result, the habitat value of the site is low, and generally lacks important habitat features such hollow-bearing trees, fissured bark, fallen woody debris and shrubs. Accordingly, the fauna utilising resources in this area are most likely to be limited to common, generalist species that are able to adapt to significant habitat disturbances (e.g. House mouse [*Mus musculus*], macropods). Common birds of prey known from the area (e.g. Wedge-tailed eagle [*Aquila audax*] and Nankeen kestrel [*Falco cenchroides*]) would also be expected to utilise this site for foraging purposes.

3.16 Corridor F292

General

Corridor F292 is a small area of approximately 200 metres in length, which encompasses a well pad adjoining corridor F5 (see Figure 1). It is mapped mostly as non-remnant vegetation, with an area of remnant 'no concern at present' RE 11.10.1/11.10.13 in the south east corner, as shown in Figure 27.

The non-remnant portion of the corridor is heavily disturbed and has been historically cleared for grazing purposes, with several access tracks bisecting the corridor.

At the southern end, the corridor is immediately adjacent to endangered RE 11.9.4 (SEVT), and as such the entire corridor is also mapped as a category B ESA.

Floristics

The non-remnant portion of Corridor F292 is heavily disturbed and is dominated by Buffel grass and other exotic species, with no mature trees.

The remnant vegetation in corridor F292 is incorrectly mapped as RE 11.10.1/11.10.13 (*Corymbia Citrioda* open forest). Field investigations determined that this remnant patch more closely resembles RE 11.10.13 (mixed *Eucalyptus/Corymbia* species), which is listed as 'no concern at present'.

No species of conservation significance under the provisions of the NC Act and/or the EPBC Act were observed within the area proposed for disturbance.

Habitat Value

No incidental fauna was recorded within or adjacent to Corridor F292.

Within the non-remnant section, habitat features associated with this corridor are limited to dense groundcover vegetation (ie grassy tussocks). As a result, the habitat value of the site is low, and generally lacks important habitat features such hollow-bearing trees, fissured bark, fallen woody debris and shrubs. Accordingly, the fauna utilising resources in this area are most likely to be limited to common, generalist species that are able to adapt to significant habitat disturbances (e.g. House mouse [*Mus musculus*], macropods). Common birds of prey known from the area (e.g. Wedge-tailed eagle [*Aquila audax*] and Nankeen kestrel [*Falco cenchroides*]) would also be expected to utilise this site for foraging purposes.

The remnant area within corridor F292 has high habitat value, with mature, hollow-bearing trees and large woody debris.

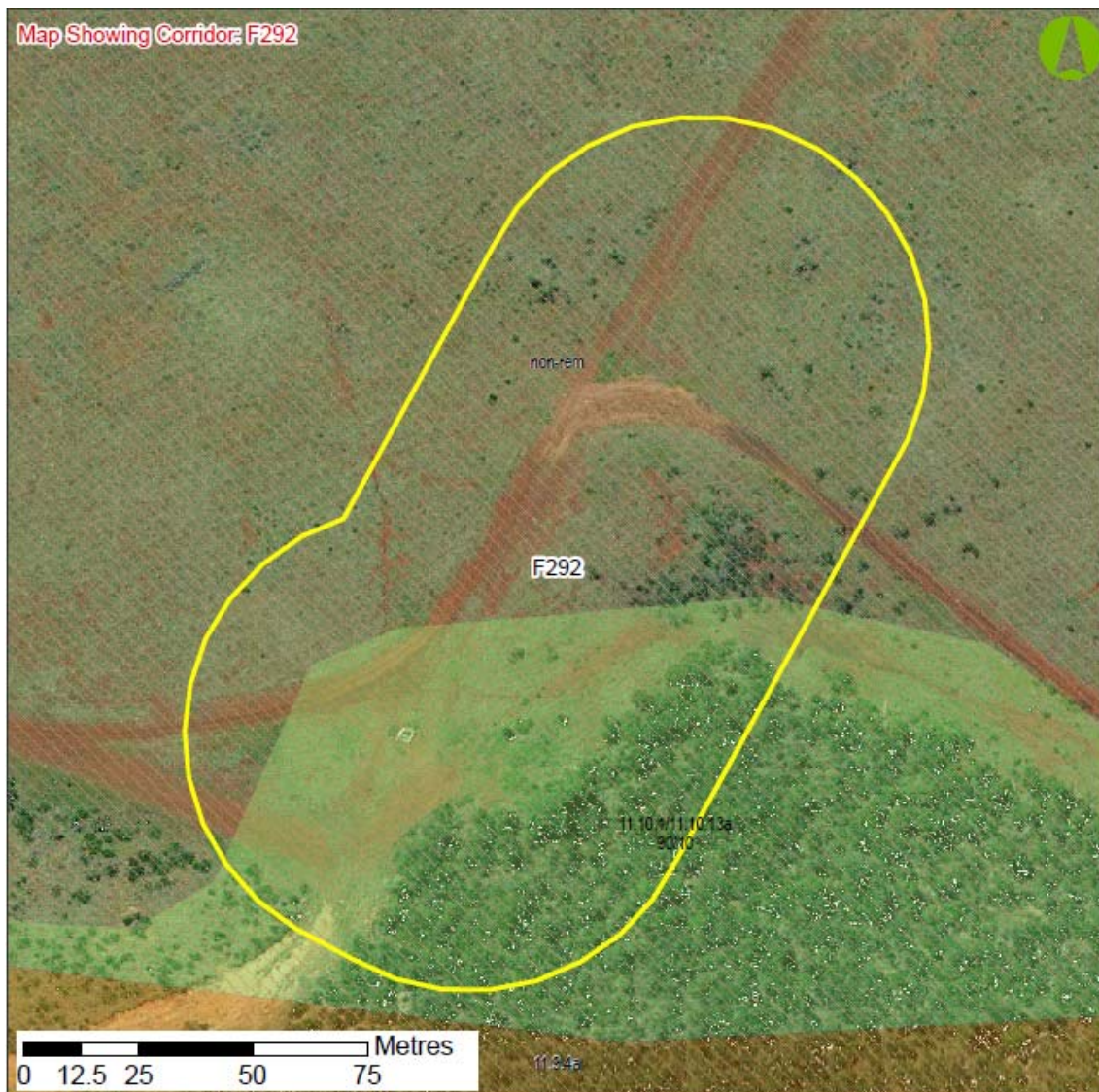


Figure 27 Aerial photograph of proposed corridor F292 with overlaid RE and ESA mapping

3.17 Corridor T3

General

Corridor T3 is approximately 12km in length, 3.2km of which occurs on lot 20WT32. The remainder occurs on lot 5WT217 and 4WT217, and has been reported separately for each of these lots.

Four geotechnical investigations areas are proposed for Corridor T3. The name and location of these areas are provided in Table 3-9.

Table 3-9 Name and location of proposed geotechnical investigation areas in corridor T3 on lot 20WT32

Name	Easting (GDA 94, Zone 55J)	Northing (GDA 94, Zone 55J)
RM-07	689651	7155360
TP-T301	689440	7155728
TP-T302	689213	7157660
RM-06	689231	7157704

The vast majority of Corridor T3 is currently mapped as remnant vegetation on the RE mapping (ie RE 11.10.1/11.10.13a – *No Concern at Present*). However, a small portion of non-remnant vegetation exists within the southern portion of the corridor. Remnant '*No Concern at Present*' vegetation is not analogous to any Category the ESA mapping. However, the northern portion of Corridor T3 has been mapped as containing essential habitat for the endangered *Melaleuca irbyana*. As a consequence, this area has been mapped as a Category C ESA (see Figure 28).

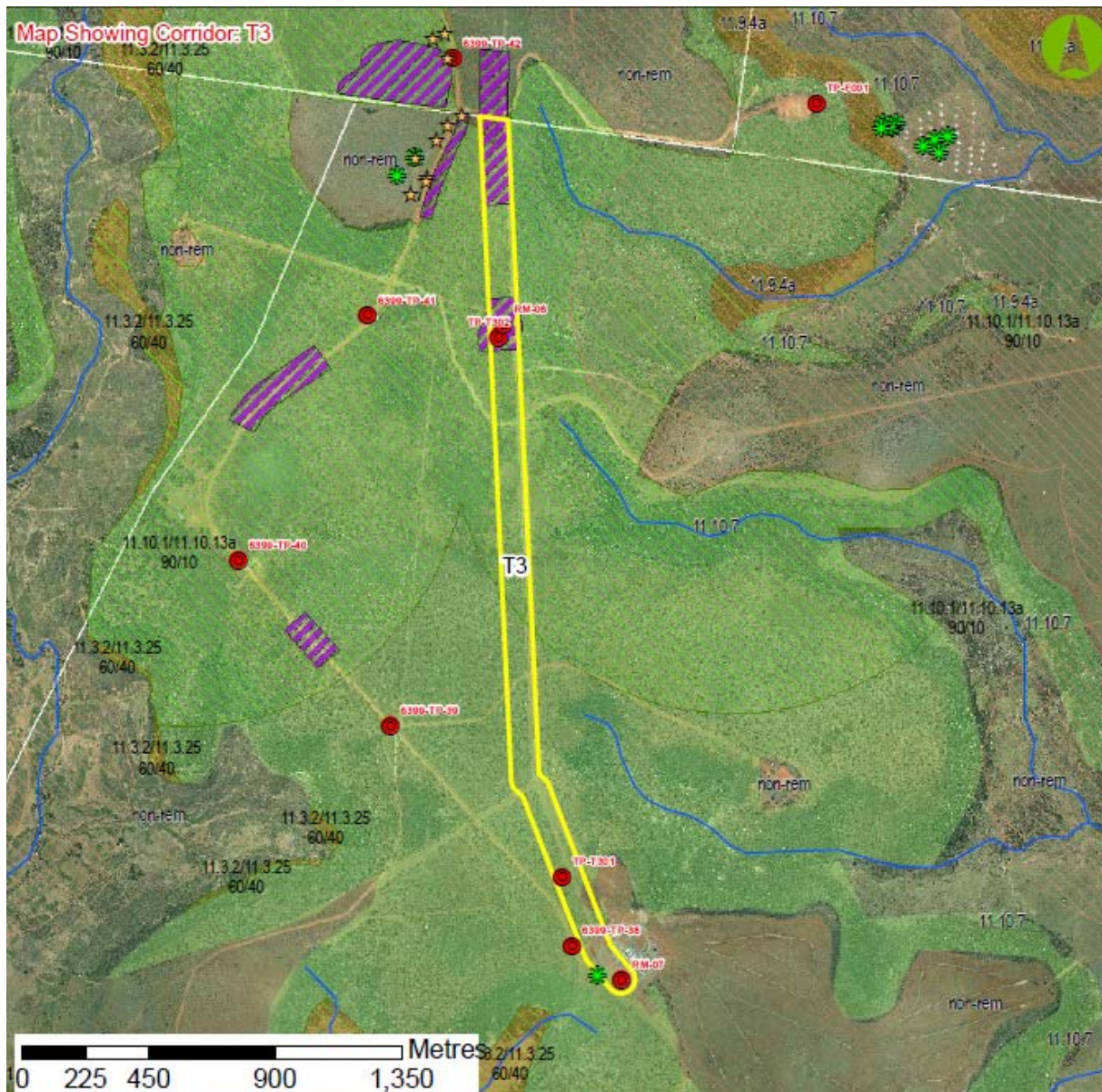


Figure 28 Aerial photograph of proposed corridor T3 on lot 20WT32 with overlaid RE and ESA mapping

No watercourses are mapped as occurring within the pipeline footprint and none were observed during the inspection.

The area has been extensively disturbed mainly due to the prior construction of an existing pipeline along the proposed alignment. The existing pipeline Right of Way (RoW) had been slashed at the time of the assessment.

Floristics and Habitat values

The pipeline corridor is located within a relatively intact landscape. As a consequence, species diversity was relatively high. Disturbed areas within the RoW were generally dominated by Buffel grass (*Pennisetum ciliare*) and regrowth dominated by Acacia species. Despite this, native grasses and forbs were well represented.

Rasp weed (*Gonocarpus urceolatus*) was observed to grow extensively within the northern portions of the alignment (purple hatched area in Figure 28), and the location details are provided in Table 3-10. This species is listed as Vulnerable under the provisions of the NC Act.

Table 3-10 Location of *Gonocarpus urceolatus* in corridor T3 on lot 20WT32

Species	Start Co-ordinates (GDA 94, Zone 55J)	End Co-ordinates (GDA 94, Zone 55J)
<i>Gonocarpus urceolatus</i>	Easting - 689225 Northing – 7157634	Easting – 689217 Northing – 7157805
<i>Gonocarpus urceolatus</i>	Easting – 689215 Northing – 7158144	Easting – 689193 Northing – 7158456

One *Brachychiton populneus*, an NC Act Type A restricted plant was recorded at the southern end of corridor T3 and its location is recorded in Table 3-11 below.

Table 3-11 Conservation significant (Type A) species in corridor T3 on lot 20WT32

Species	Easting (GDA 94, Zone 55J)	Northing (GDA 94, Zone 55J)
<i>Brachychiton populneus</i>	689564	7155377

The habitat values of this corridor are relatively high overall. However, invasion of exotic pasture species has occurred along the RoW which has been maintained by slashing. This slashing has decreased the habitat value of the central portion of this corridor. However, shrubby regrowth adjacent to the existing RoW is likely to provide habitat and breeding sites for small avian fauna.

3.18 Road Upgrade Corridor

General

Eight geotechnical investigations areas are proposed for the Road Upgrade Corridor. The name and location of these areas is provided in Table 3-12.

Table 3-12 Name and location of proposed geotechnical investigation areas in road upgrade corridor

Name	Easting (GDA 94, Zone 55J)	Northing (GDA 94, Zone 55J)
RM-07	689651	7155360
6399-TP-35	692155	7153040
6399-TP-36	690298	7153842
6399-TP-37	689758	7154653
6399-TP-38	689476	7155480
6399-TP-39	688828	7156269
6399-TP-40	688287	7156861
6399-TP-41	688748	7157738

Floristics and Habitat values

The Road Upgrade Corridor is located within a relatively intact landscape although disturbance as a result of the existing roadway has caused considerable edge effects to the extant vegetation (eg dust accumulation on leaves). Diversity within the road upgrade corridor was relatively high. Pasture flora species were generally present along the immediate edge of the existing road although native woodland species dominated areas within the remnant vegetation. Remnant vegetation was dominated by *Eucalyptus* species. Acacia regrowth was apparent within disturbed areas.

Rasp weed (*Gonocarpus urceolatus*) was observed to grow extensively within portions of the alignment, and is indicated in Figure 29 with areas of purple hatching. *Melaleuca irbyana* (indicated with gold stars) was also present within the northern portion of the alignment. *Melaleuca irbyana* is listed as Vulnerable and *Gonocarpus urceolatus* is listed as Near Threatened under the provisions of the NC Act. The location of *Gonocarpus* is given in Table 3-13. Numerous Type A restricted plants (NC Act) were identified, and are presented in Table 3-14.

Table 3-13 Location of *Gonocarpus urceolatus* in road upgrade corridor

Species	Start Co-ordinates (GDA 94, Zone 55J)	End Co-ordinates (GDA 94, Zone 55J)
<i>Gonocarpus urceolatus</i>	Easting - 688609 Northing - 7156507	Easting – 688488 Northing – 7156645
<i>Gonocarpus urceolatus</i>	Easting – 688291 Northing - 7157336	Easting – 688581 Northing – 7157603
<i>Gonocarpus urceolatus</i>	Easting – 688950 Northing - 7158071	Easting – 689075 Northing - 7158452

The habitat value of this corridor is generally considered to be medium as a consequence of the existing roadway. In addition, highly disturbed grassland habitats within the southern portion of the alignment are considered to be relatively low. Invasion of exotic pasture species has occurred along the existing roadway, resulting in suppression of native species. However, shrubby regrowth adjacent to the existing roadway is likely to provide habitat and breeding sites for small avian fauna and larger trees that are located away from the existing edge of the road are likely to provide habitat for larger birds and arboreal mammals.

Table 3-14: Species of conservation significance in the road upgrade corridor

Species	Classification	Easting (GDA 94, Zone 55J)	Northing (GDA 94, Zone 55J)
<i>Brachychiton rupestris</i>	NCA Reg Type A	692154	7152778
<i>Brachychiton rupestris</i>	NCA Reg Type A	692156	7152779
<i>Brachychiton rupestris</i>	NCA Reg Type A	692145	7152782
<i>Brachychiton rupestris</i>	NCA Reg Type A	692139	7152785
<i>Brachychiton australis</i>	NCA Reg Type A	692143	7152785
<i>Brachychiton rupestris</i>	NCA Reg Type A	692162	7152787
<i>Brachychiton rupestris</i>	NCA Reg Type A	692148	7152791
<i>Brachychiton australis</i>	NCA Reg Type A	692161	7152795
<i>Brachychiton australis</i>	NCA Reg Type A	692162	7152800

Santos Fairview Lot 20WT32 Ecological Assessment

Species	Classification	Easting (GDA 94, Zone 55J)	Northing (GDA 94, Zone 55J)
<i>Brachychiton australis</i>	NCA Reg Type A	692161	7152804
<i>Brachychiton rupestris</i>	NCA Reg Type A	692170	7152806
<i>Brachychiton rupestris</i>	NCA Reg Type A	692402	7152804
<i>Brachychiton australis</i>	NCA Reg Type A	692176	7152814
<i>Brachychiton rupestris</i>	NCA Reg Type A	692180	7152820
<i>Brachychiton rupestris</i>	NCA Reg Type A	692172	7152828
<i>Brachychiton rupestris</i>	NCA Reg Type A	692176	7152838
<i>Brachychiton rupestris</i>	NCA Reg Type A	692174	7152844
<i>Cymbidium canaliculatum</i>	NCA Reg Type A	692185	7152851
<i>Platynerium veitchii</i>	NCA Reg Type A	692189	7152851
<i>Brachychiton rupestris</i>	NCA Reg Type A	692177	7152852
<i>Brachychiton rupestris</i>	NCA Reg Type A	692189	7152853
<i>Brachychiton rupestris</i>	NCA Reg Type A	692179	7152853
<i>Brachychiton australis</i>	NCA Reg Type A	692177	7152856
<i>Brachychiton rupestris</i>	NCA Reg Type A	692182	7152861
<i>Brachychiton rupestris</i>	NCA Reg Type A	692181	7152868
<i>Brachychiton rupestris</i>	NCA Reg Type A	692180	7152873
<i>Brachychiton rupestris</i>	NCA Reg Type A	692177	7152873
<i>Brachychiton australis</i>	NCA Reg Type A	692177	7152873
<i>Brachychiton populneus</i>	NCA Reg Type A	692181	7152875
<i>Brachychiton rupestris</i>	NCA Reg Type A	692191	7152876
<i>Brachychiton australis</i>	NCA Reg Type A	692198	7152878
<i>Brachychiton australis</i>	NCA Reg Type A	692203	7152881
<i>Brachychiton rupestris</i>	NCA Reg Type A	692203	7152888
<i>Platynerium veitchii</i>	NCA Reg Type A	692201	7152901
<i>Brachychiton australis</i>	NCA Reg Type A	692202	7152908
<i>Brachychiton australis</i>	NCA Reg Type A	692202	7152915
<i>Brachychiton australis</i>	NCA Reg Type A	692204	7152925
<i>Brachychiton australis</i>	NCA Reg Type A	692202	7152926
<i>Brachychiton australis</i>	NCA Reg Type A	692201	7152928

Species	Classification	Easting (GDA 94, Zone 55J)	Northing (GDA 94, Zone 55J)
<i>Brachychiton australis</i>	NCA Reg Type A	692202	7152939
<i>Cymbidium canaliculatum</i>	NCA Reg Type A	692205	7152960
<i>Brachychiton australis</i>	NCA Reg Type A	692203	7153002
<i>Brachychiton rupestris</i>	NCA Reg Type A	692206	7153003
<i>Brachychiton rupestris</i>	NCA Reg Type A	692203	7153006
<i>Brachychiton australis</i>	NCA Reg Type A	692202	7153026
<i>Platyserium veitchii</i>	NCA Reg Type A	692174	7153036
<i>Brachychiton australis</i>	NCA Reg Type A	692175	7153063
<i>Brachychiton rupestris</i>	NCA Reg Type A	692171	7153066
<i>Brachychiton rupestris</i>	NCA Reg Type A	692166	7153068
<i>Brachychiton rupestris</i>	NCA Reg Type A	692149	7153084
<i>Brachychiton rupestris</i>	NCA Reg Type A	692149	7153084
<i>Brachychiton rupestris</i>	NCA Reg Type A	692089	7153168
<i>Brachychiton rupestris</i>	NCA Reg Type A	692066	7153185
<i>Brachychiton australis</i>	NCA Reg Type A	691976	7153320
<i>Brachychiton australis</i>	NCA Reg Type A	691964	7153334
<i>Brachychiton australis</i>	NCA Reg Type A	689564	7155378
<i>Brachychiton rupestris</i>	NCA Reg Type A	688900	7158170
<i>Brachychiton populneus</i>	NCA Reg Type A	688955	7158222
<i>Maleleuca irbyana</i>	NCA Endangered	688961	7158235
<i>Maleleuca irbyana</i>	NCA Endangered	688991	7158366
<i>Maleleuca irbyana</i>	NCA Endangered	689032	7158418
<i>Maleleuca irbyana</i>	NCA Endangered	689081	7158453
<i>Maleleuca irbyana</i>	NCA Endangered	692154	7152778
<i>Maleleuca irbyana</i>	NCA Endangered	692156	7152779

4. References

Eddie, C. (2007). *Field Guide to Trees and Shrubs of Eastern Queensland Oil and Gas Fields*, Santos House, Adelaide.

Regional Ecosystem Mapping, Version 6, Department of Environment and Resource Management
Species Profile and Threats Database, <http://www.environment.gov.au/cgi-bin/sprat/public/sprat.pl>



Appendix A

Flora species list for Fairview lot 20WT32



Appendix A

Species	Common name	Notes
<i>Ablution malvifolium</i>	Chinese Lantern	
<i>Abutilon leucopetalum</i>	Abutilon	
<i>Abutilon otocarpum</i>	Chinese Lantern, Large Abutilon	
<i>Abutilon oxycarpum</i>	Chinese Lantern	
<i>Acacia brachycarpa</i>	Black wattle	
<i>Acacia complanata</i>	Velvet Wattle	
<i>Acacia conferta</i>	Pine wattle	
<i>Acacia curvinervia</i>	Curly Leaf Wattle	
<i>Acacia deanii</i>	Dean's Wattle	
<i>Acacia decora</i>	Pretty Wattle	
<i>Acacia excelsa</i>	Iron wood	
<i>Acacia farnesiana</i>	Prickly mimosa/ Needle bush	
<i>Acacia fasciculifera</i>	Scrub Ironbark	
<i>Acacia harpophylla</i>	Brigalow	
<i>Acacia jucunda</i>	Hairy Wattle	
<i>Acacia leiocalyx</i>	Black Wattle	
<i>Acacia leiocalyx subsp. leiocalyx</i>	Grey Wattle	
<i>Acacia leptostachya</i>	Slender Wattle	
<i>Acacia macradenia</i>	Zigzag Wattle	
<i>Acacia neriifolia</i>	Silver Wattle	
<i>Acacia salicina</i>	Sally Wattle	
<i>Acacia shirleyi</i>	Lancewood	
<i>Acacia tenuissima</i>	Long Leaf Wattle	
<i>Acacia tephina</i>	Boree	
<i>Acalypha sp.</i>	Turkey Bush	
<i>Acanthospermum hispidulum</i>	Star burr	
<i>Achyranthes aspera</i>	Two spine burr	
<i>Acrotilon maculosa</i>	Knap Weed	
<i>Acrotriche aggregata</i>	Red cluster heath	
<i>Adiantum aethiopicum</i>	Queensland Maidenhair	
<i>Adiantum hispidulum</i>	rough maidenhair fern	
<i>Aeschynomene paniculata</i>	Panicle Joint Vetch	

Species	Common name	Notes
<i>Ajuga australis</i>	Austral Bugle	
<i>Alectryon connatus</i>	Grey Birdseye	
<i>Alectryon diversifolius</i>	Scrub Boonaree	
<i>Alectryon oleifolius</i>	Boonaree	
<i>Allocasuarina inophloia</i>	Stringybark She-oak	
<i>Allocasuarina leuhmannii</i>	Bull Oak	
<i>Allocasuarina torulosa</i>	Forest She-oak	
<i>Alloteropsis semialata</i>	Cockatoo Grass	
<i>Alphitonia excelsa</i>	Red Ash	
<i>Alstonia constricta</i>	Bitter Bark	
<i>Alternanthera dentata</i>	Joy Weed	
<i>Alternanthera nodiflora</i>	Common Joy Weed	
<i>Alternanthera pungens</i>	Kaki Burr	
<i>Alysicarpus rugosa</i>	Chain pea	
<i>Ammannia multiflora</i>	Jerry-jerry	
<i>Ancistrachne uncinulata</i>	Giant Spear Grass	
<i>Angophora floribunda</i>	Rough-barked Apple	
<i>Angophora leiocarpa</i>	Smooth-barked Apple	
<i>Aphyllodium sp</i>	Blue tree foil	
<i>Apophyllum anomalum</i>	Warrior bush	
<i>Archidendropsis basaltica</i>	Dead finish	
<i>Argemone ochroleuca</i>	Mexican Poppy	
<i>Aristida caput medusae</i>	Curly Head Wire Grass	
<i>Aristida holathera</i>	Tall Wire Grass	
<i>Aristida inaequiglumis</i>	Feathertop three awn	
<i>Aristida ingrata</i>	Purple Aristida	
<i>Aristida jerichoensis</i>	Jericho wire grass	
<i>Aristida jerichoensis var. subspinulifera</i>	Jericho wire grass	
<i>Aristida latifolia</i>	Hairy Aristida	
<i>Aristida leptopoda</i>	Wire Grass	
<i>Aristida muricata</i>	Wire Grass	
<i>Aristida personata</i>	Spear Grass	
<i>Aristida queenslandica var. dissimilis</i>	Wire Grass	
<i>Aristida ramosa</i>	Wire Grass	

Species	Common name	Notes
<i>Arytera divaricata</i>	Rose tamarind	
<i>Aeschynomene indica</i>	Budda pea	
<i>Astrotricha cordata</i>	Hare Plant	
<i>Atalaya hemiglauca</i>	Whitewood	
<i>Atalaya salicifolia</i>	Scrub Whitewood	
<i>Austrostipa verticillata</i>	Slender Bamboo Grass	
<i>Babingtonia densifolia</i>	Babingtonia	
<i>Backhousia angustifolia</i>	Grey Myrtle	
<i>Bidens alba</i>	Giant Cobblers Pegs	
<i>Bidens bipinnata</i>	Native Cobblers Pegs	
<i>Bidens pilosa</i>	Cobblers Pegs	
<i>Blechnum cartilagineum</i>	Gristle Fern	
<i>Boerhavia schomburgkiana</i>	Tar Vine	
<i>Bothriochloa bladhii</i>	Forest Blue Grass	
<i>Bothriochloa bladhii subsp. bladhii</i>	Forest Blue Grass	
<i>Bothriochloa decipiens var. decipiens</i>	Pitted Bluegrass	
<i>Bothriochloa ewartiana</i>	Desert Blue Grass	
<i>Bothriochloa pertusa</i>	Indian Couch	
<i>Brachiaria decumbens</i>	Signal Grass	
<i>Brachiaria subquadripara</i>	Green summer grass	
<i>Brachychiton australis</i>	Broad Leaf Bottle Tree	NC Act Type A Species
<i>Brachychiton populneus</i>	Kurrajong	NC Act Type A Species
<i>Brachychiton rupestris</i>	Narrow Leaved Bottle Tree	NC Act Type A Species
<i>Brachycome dentata</i>	Lobe-seed Daisy	
<i>Bracteantha bracteata</i>	Everlasting Daisy	
<i>Breynia oblongifolia</i>	Breynia	
<i>Bulbine bulbosa</i>	Buttercup	
<i>Bulbostylis sp</i>	Bulbostylis	
<i>Bursaria spinosa</i>	Prickly Pine	
<i>Callitris endlicheri</i>	Black Cypress Pine	
<i>Callitris glaucophylla</i>	White Cypress Pine	
<i>Calocephalus platycephalus</i>	Billy Buttons	
<i>Calotis cuneifolia</i>	Purple Burr Daisy	
<i>Calotis hispidula</i>	Bogan Flea	
<i>Calotis lappulacea</i>	Yellow Burr Daisy	

Species	Common name	Notes
<i>Calotis multicaulis</i>	Woolly head burr daisy	
<i>Calytrix sp.</i>	Myrtle heather	
<i>Canthium oleifolium</i>	Hat stand, Wild Lemon	
<i>Capparis lasiantha</i>	Native Orange	
<i>Capparis loranthifolia</i>	Nipan, Wait a while	
<i>Capparis mitchellii</i>	Bumble fruit	
<i>Capparis sepiaria</i>	Wild Caper Bush	
<i>Capparis spinosa</i>	Capparis midsize	
<i>Cardamine hirsuta</i>	Flick weed	
<i>Carex inversa</i>	Nut Sedge	
<i>Carissa lanceolata</i>	Currant Bush	
<i>Carissa ovata</i>	Currant Bush	
<i>Cassinia laevis</i>	Cough Bush	
<i>Casuarina cristata</i>	Belah	
<i>Casuarina cunninghamiana</i>	River She-oak	
<i>Cenchrus setiger</i>	Birdwood Grass	
<i>Centaurea maculosa</i>	Knap Weed	
<i>Centipeda minima</i>	Spreading sneeze weed	
<i>Cestrum parqui</i>	Green Cestrum	
<i>Chamaesyce australis</i>	Hairy Caustic Weed	
<i>Chamaesyce drummondii</i>	Caustic Weed	
<i>Cheilanthes aspera</i>	Bristly cloak fern	
<i>Cheilanthes sieberi</i>	Mulga Fern	
<i>Chenopodium album</i>	Fat Hen	
<i>Chenopodium auricomum</i>	Queensland Bluebush	
<i>Chenopodium carinatum</i>	Keeled Goosefoot	
<i>Chenopodium desertorum</i>	Desert Goosefoot	
<i>Chionanthus ramiflora</i>	Native Olive	
<i>Chloris divaricata</i>	Windmill Chloris	
<i>Chloris gayana</i>	Rhodes Grass	
<i>Chloris inflata</i>	Purple Top Rhodes	
<i>Chloris pectinata</i>	Comb Chloris	
<i>Chloris ventricosa</i>	Tall Chloris	
<i>Chloris virgata</i>	Silky Topped Rhodes Grass	
<i>Chondrilla juncea</i>	Skeleton Weed	

Species	Common name	Notes
<i>Chrysocephalum apiculatum</i>	Yellow Buttons	
<i>Cinnamomum oliveri</i>	Oliver's sassafras	
<i>Cirsium vulgare</i>	Spear Thistle, Black Thistle	
<i>Cissus opaca</i>	Native Grape	
<i>Citrus glauca</i>	Lime bush	
<i>Cleome viscosa</i>	Tickweed	
<i>Clerodendron parviflora</i>	Lolly Bush	
<i>Codonocarpus attenuatus</i>	Bell-fruit Tree	
<i>Commelina diffusa</i>	Wandering Jew	
<i>Convolvulus arvensis</i>	Bind Weed	
<i>Conyza bonariensis</i>	Fleabane	
<i>Conyza canadensis</i>	Canadian fleabane	
<i>Conyza canadensis var. pusilla</i>	Fleabane	
<i>Corchorus trilocularis</i>	Corchorus	
<i>Corymbia citriodora</i>	Lemon scented gum	
<i>Corymbia clarksoniana</i>	Clarkson's Bloodwood	
<i>Corymbia erythrophloia</i>	variable-barked bloodwood	
<i>Corymbia hendersonii</i>	Henderson's Bloodwood	
<i>Corymbia tessellaris</i>	Moreton Bay Ash	
<i>Corymbia trachyphloia</i>	small fruited bloodwood	
<i>Cotula australis</i>	Carrot Weed	
<i>Crinum pedunculatum</i>	Spider Lilly	
<i>Crotalaria dissitiflora</i>	Grey Rattlepod	
<i>Crotalaria medicaginea</i>	Treefoil rattlepod	
<i>Crotalaria mitchellii</i>	Hairy RattlePod	
<i>Crotalaria novae-hollandiae</i>	New Holland Rattlepod	
<i>Crotalaria dissitiflora</i>	Grey Rattlepod	
<i>Crotalaria lanceolata</i>	Lance leaf Rattlepod	
<i>Crotalaria pallida</i>	Streaked Rattlepod	
<i>Croton insularis</i>	Silver Croton	
<i>Cucumis myriocarpus</i>	Paddy melon	
<i>Cupaniopsis anacardioides</i>	Tuckeroo	
<i>Cymbidium canaliculatum</i>	Black Orchid	NC Act Type A Species
<i>Cymbopogon bombycinus</i>	Lemon Grass	
<i>Cymbopogon oblectus</i>	Fluffy Tops	

Species	Common name	Notes
<i>Cymbopogon refractus</i>	Barbwire Grass	
<i>Cynodon dactylon</i>	Green Couch	
<i>Cyperus bifax</i>	Star Sedge	
<i>Cyperus difformis</i>	sedge 2 - difformis, Dirty Dora	
<i>Cyperus gracilis</i>	Bunchy Sedge	
<i>Cyperus gunnii</i>	Sedge	
<i>Cyperus gymnocaulos</i>	Grey sedge	
<i>Cyperus gymnocaulos</i>	Sedge with nuts	
<i>Cyperus holoschoenus</i>	Rush sedge	
<i>Cyperus ira</i>	Variable sedge	
<i>Cyperus iris</i>	Rice flatsedge	
<i>Cyperus polystachyos</i>	Bunchy Sedge	
<i>Cyperus rotundus</i>	Nut Grass	
<i>Dactyloctenium radulans</i>	Button Grass	
<i>Dactyloctenium radulans</i>	Button Grass	
<i>Datura stramonium</i>	Thorn apple	
<i>Daucus glochidiatus</i>	Wild carrot	
<i>Denhamia oleaster</i>		
<i>Desmodium brachypodum</i>	Desmodium	
<i>Desmodium filiforme</i>	Necklace pea	
<i>Desmodium varians</i>	Tree Foil	
<i>Dianella caerulea</i>	Blue Flax-lily	
<i>Dianella longifolia</i>	Dianella	
<i>Dichanthium sericeum</i>	Queensland Blue Grass	
<i>Digitaria ammophila</i>	Digitaria	
<i>Digitaria brownii</i>	Tall Digitaria	
<i>Digitaria coenicola</i>	Digitaria	
<i>Dioscorea transversa</i>	Native Yam	
<i>Diospyros humilis</i>	Scrub Ebony	
<i>Diospyros geminata</i>	scaly ebony	
<i>Dodonaea boroniifolia</i>	Pinnate Dodonaea	
<i>Dodonaea filifolia</i>	Hopbush	
<i>Dodonaea heteromorpha</i>	Hopbush	
<i>Dodonaea lanceolata</i>	Hopbush	
<i>Dodonaea physocarpa</i>	Hopbush	

Species	Common name	Notes
<i>Dodonaea triangularis</i>	Fan Hopbush	
<i>Dodonaea triquetra</i>	Hopbush	
<i>Dodonaea vestita</i>	Hopbush	
<i>Dodonaea viscosa</i>	Sticky Hopbush	
<i>Dodonaea viscosa subsp. angustifolia</i>	Sticky Hopbush	
<i>Dodonaea viscosa subsp. lanceolata</i>	Sticky Hopbush	
<i>Dodonaea viscosa subsp. spatulata</i>	Sticky Hopbush	
<i>Dodonaea physocarpa</i>	Lantern hopbush	
<i>Dolichandrone heterophylla</i>	Lemon wood	
<i>Drosera burmannii</i>	Sundew	
<i>Drosera peltata</i>	Erect Sundew	
<i>Drosera spathulata</i>	Spoon-leaf sundew	
<i>Duboisia leichhardtii</i>		
<i>Echinochloa colona</i>	Awnless Barnyard Grass	
<i>Echinochloa crus-galli</i>	Barnyard Grass, Japanese Millet	
<i>Ehretia saligna</i>	Coonta	
<i>Einadia hastens</i>	Saltbush	
<i>Einadia nutans</i>	Climbing Saltbush	
<i>Elaeodendron australis</i>	Peach Leaf	
<i>Eleusine indica</i>	Crowsfoot Grass	
<i>Enneapogon avenaceus</i>	Bottle Washer	
<i>Enneapogon oblongus</i>	Purple Head Nineawn	
<i>Enneapogon polyphyllus</i>	Limestone Bottle washer	
<i>Enteropogon acicularis</i>	Curly Windmill Grass	
<i>Enteropogon ramosus</i>	Twirly Windmill Grass	
<i>Eragrostis australiensis</i>	Swamp Cane Grass	
<i>Eragrostis basedowii</i>	Neat Lovegrass	
<i>Eragrostis brownii</i>	Browns Lovegrass	
<i>Eragrostis elastica</i>	Elastic Grass	
<i>Eragrostis elongata</i>	Clustered Lovegrass	
<i>Eragrostis eriopoda</i>	Woolly Butt	
<i>Eragrostis fallax</i>	Tall Lovegrass	
<i>Eragrostis lacunaria</i>	Tall Love Grass	

Species	Common name	Notes
<i>Eragrostis leptocarpa</i>	Drooping Lovegrass	
<i>Eragrostis leptostachya</i>	Lovegrass	
<i>Eragrostis setifolia</i>	Never fail Grass	
<i>Eragrostis sororia</i>	Blue eragrostis	
<i>Eragrostis spartinoides</i>	Lovegrass	
<i>Eragrostis tenella</i>	Japanese Lovegrass	
<i>Eremochloa bimaclulata</i>	poverty grass	
<i>Eremophila debilis</i>	Winter Apple	
<i>Eremophila mitchellii</i>	False Sandalwood	
<i>Eriachne ciliata</i>	Slender wanderrie	
<i>Eriachne glauca</i>	Pan Wanderrie Grass	
<i>Eriachne helmsii</i>	Wooly butt	
<i>Eriocereus spp</i>	Harrisa cactus	
<i>Eriochloa crebra</i>	Tall cupgrass	
<i>Eriochloa sp</i>	Cupgrass	
<i>Erythrina vespertilio</i>	Batwing Coral tree	
<i>Erythroxylum australe</i>	Cocaine tree	
<i>Eucalyptus camaldulensis</i>	River Red Gum	
<i>Eucalyptus chloroclada</i>	Dirty Gum	
<i>Eucalyptus crebra</i>	Narrow Leaved Ironbark	
<i>Eucalyptus crebra X E melanophloia</i>		
<i>Eucalyptus decorticans</i>	Gum Topped Ironbark	
<i>Eucalyptus exserta</i>	Queensland Peppermint	
<i>Eucalyptus fibrosa subsp. nubila</i>	Blue-leaved Ironbark	
<i>Eucalyptus leichardtii</i>	Yellow Jacket	
<i>Eucalyptus melanophloia</i>	Silver Leaved Ironbark	
<i>Eucalyptus orgadophila</i>	Mountain Coolibah	
<i>Eucalyptus orgadophila X E populnea</i>		
<i>Eucalyptus populnea</i>	Poplar Box	
<i>Eucalyptus populnea X E crebra</i>		
<i>Eucalyptus tenuipes</i>	Narrow Leaved White Mahogany	
<i>Eucalyptus tereticornis</i>	Queensland Blue Gum	
<i>Eulalia aurea</i>	Silky Brown Top Grass	

Species	Common name	Notes
<i>Eulalia fulva</i>	Silky Brown Top Grass	
<i>Euphorbia drummondii</i>	Caustic Weed	
<i>Euphorbia peplus</i>	Petty Spurge	
<i>Eustrephus latifolia</i>	Wombat Berry	
<i>Evolvulus alsinoides</i>	Speed Well	
<i>Exocarpus cupressifolia</i>	Bush Cherry	
<i>Ficus opposita</i>	Sandpaper Fig	
<i>Ficus rubiginosa</i>	Moreton Bay Fig	
<i>Fimbristylis dichotoma</i>	Fimbristylis	
<i>Fimbristylis nutans</i>	Star sedge	
<i>Flemingia sp</i>	Flemingia	
<i>Flindersia australis</i>	Crows ash	
<i>Flindersia collina</i>	Leopardwood	
<i>Flindersia maculosa</i>	Leopardwood	
<i>Flueggea leucopyrus</i>		
<i>Gahnia aspera</i>	Gahnia	
<i>Gahnia sieberiana</i>	Sword Grass	
<i>Galactia tenuifolia</i>	Galactia	
<i>Geijera parviflora</i>	Wilga	
<i>Glossocardia bidens</i>	Native Cobblers Peg	
<i>Glycine falcata</i>	Glycine	
<i>Glycine tomentella</i>	Hairy Glycine	
<i>Gnaphalium sp.</i>	Cudweed	
<i>Gomphocarpus physocarpus</i>	Balloon Cotton Bush	
<i>Gomphrena celosioides</i>	Gomphrena Weed	
<i>Gomphrena flaccida</i>	Bunchy Gomphrena	
<i>Gonocarpus micranthus subsp. ramosissimus</i>	Gonocarpus	
<i>Gonocarpus urceolatus</i>	Gonocarpus	NC Act Vulnerable
<i>Goodenia fascicularis</i>	Goodenia	
<i>Goodenia glabra</i>	Smooth Goodenia	
<i>Goodenia grandiflora</i>	Goodenia	
<i>Goodenia rotundifolia</i>	Goodenia	
<i>Goodenia strangfordii</i>	Goodenia	
<i>Gossypium australe</i>	Native cotton	
<i>Gossypium sturtianum</i>	Sturt's Desert Rose	

Species	Common name	Notes
<i>Grevillea</i> sp. 1		
<i>Grevillea striata</i>	Beefwood	
<i>Grewia latifolia</i>	Dysentery Plant	
<i>Haemodorum austroqueenslandicum</i>	Bloodroot	
<i>Hakea chordophylla</i>	Prickly Oak	
<i>Hakea lorea</i>	Bootlace Oak	
<i>Hakea purpurea</i>	flame hakea	
<i>Haloragis glauca</i>	Haloragis	
<i>Hardenbergia violacea</i>	Native sarsaparilla	
<i>Heliotropium amplexicaule</i>	Blue Heliotrope	
<i>Heteropogon contortus</i>	Black Spear Grass	
<i>Hibbertia cistoidea</i>	Guinea flower	
<i>Hibbertia linearis</i>	Guinea flower	
<i>Hibbertia sericea</i>	Guinea flower	
<i>Hibiscus brachysiphonius</i>	Bush Hibiscus	
<i>Hibiscus heterophylla</i>	Native rosella	
<i>Hibiscus sturtii</i>	Hill Hibiscus	
<i>Hibiscus trionum</i>	Bladder Ketmia	
<i>Hovea lorata</i>	Hovea	
<i>Hovea planifolia</i>	Hovea	
<i>Hoya australis</i>		
<i>Hybanthus aurantiacus</i>	Orange spade flower	
<i>Hybanthus enneaspermus</i>	Blue spade flower	
<i>Hybanthus enneaspermus stellarioides</i>	Orange/Yellow Spade Flower	
<i>Hybanthus monopetalus</i>	Purple Spade Flower	
<i>Hydrocotyle</i> sp.	Pennywort	
<i>Hypochaeris microcephala</i> var. <i>albiflora</i>	White Flatweed	
<i>Hyptis capitata</i>	Knob Weed	
<i>Hyptis spicigera</i>	Bush mint	
<i>Hyptis suaveolens</i>	Hyptis	
<i>Imperata cylindrica</i>	Blady Grass	
<i>Indigofera colutea</i>	Rusty indigo	
<i>Indigofera linifolia</i>	Little Red Pea	

Species	Common name	Notes
<i>Indigofera spicata</i>	Creeping Indigo, Purple Indigo	
<i>Ipomoea longifolia</i>	Cow Vine	
<i>Iseilema vaginiflorum</i>	Red flinders	
<i>Ixiolaena brevicompta</i>	Yellow Daisy	
<i>Jacksonia scoparia</i>	Jacksonia	
<i>Jasminum didymum subsp. racemosum</i>	Native Jasmine	
<i>Jasminum simplicifolium</i>	Native Jasmine	
<i>Juncus polyanthemos</i>	Sharp Rush	
<i>Juncus usitatus</i>	Juncus	
<i>Keraudrenia collina</i>	Keraudrenia	
<i>Keraudrenia hookeriana</i>	Keraudrenia	
<i>Keraudrenia nephrosperma</i>	Keraudrenia	
<i>Centipeda minima</i>	Sneeze weed	
<i>Lepidium sagittulatum</i>	Pepper Cress	
<i>Leptochloa digitata</i>	Cane Grass	
<i>Leptospermum neglectum</i>		
<i>Leucopogon biflorus</i>	Two Flowered Leucopogon	
<i>Leucopogon mitchellii</i>	Leucopogon	
<i>Lomandra leucocephala</i>	Lomandra	
<i>Lomandra confertifolia</i>	Lomandra	
<i>Lomandra hystrix</i>	Creek Mat Rush	
<i>Lomandra longifolia</i>	Lomandra	
<i>Lomandra multiflora</i>	Lomandra	
<i>Lomandra multiflora subsp. multiflora</i>	Lomandra	
<i>Lomandra spicata</i>	Lomandra	
<i>Lophostemon suaveolens</i>	Swamp Mahogany	
<i>Corchorus sidoides</i>	Flannel jute	
<i>Lotus corniculatus</i>	Lotus, Birdsfoot Trefoil	
<i>Ludwigia octovaluis</i>	Willow primrose	
<i>Ludwigia peploides</i>	Water primrose	
<i>Lysicarpus angustifolius</i>	Budgeroo	
<i>Macfadyena unguis-cati</i>	Cat's claw creeper	
<i>Macroptilium atropurpureum</i>	Siratro	

Species	Common name	Notes
<i>Macroptilium lathyroides</i>	Phasey bean	
<i>Maireana microphylla</i>	Small-leaf Bluebush	
<i>Maireana villosa</i>	Silky Bluebush	
<i>Malva parviflora</i>	Small-flowered Mallow	
<i>Malvastrum americanum</i>	Spiny Malvastrum	
<i>Marsdenia australis</i>	Marsdenia	
<i>Marsdenia lanceolata</i>	Marsdenia	
<i>Marsdenia lloydii</i>	Marsdenia	
<i>Marsdenia longifolia</i>	Marsdenia	
<i>Marsdenia viridiflora</i>	Marsdenia	
<i>Marsdenia viridiflora subsp. viridiflora</i>	Marsdenia	
<i>Marsilea drummondii</i>	Nardoo	
<i>Maytenus cunninghamii</i>	Yellow Berry Bush	
<i>Maytenus disperma</i>		
<i>Medicago polymorpha</i>	Burr Medic	
<i>Megathyrsus maximus var maximus</i>	Guinea Grass	
<i>Megathyrsus maximus var. trichoglume</i>	Green Panic	
<i>Melaleuca nervosa</i>	Prickly Tea-tree	
<i>Melaleuca nodosa</i>	Prickly leaved paperbark	
<i>Melaleuca viminalis</i>	Weeping bottlebrush	
<i>Melhania oblongifolia</i>	Velvet hibiscus	
<i>Melia azedarach</i>	White Cedar	
<i>Melinis repens</i>	Red Natal	
<i>Minuria integerrima</i>	Smooth minura	
<i>Monachather paradoxa</i>	Mulga oats	
<i>Myoporum acuminatum</i>	Boobiolla	
<i>Myrsine variabilis</i>		
<i>Neobassia proceriflora</i>	Soda Bush	
<i>Neptunia gracilis</i>	Native Sensitive Weed	
<i>Neptunia monosperma</i>	Neptunia	
<i>Nicotiana megalosiphon</i>	Wild Tobacco	
<i>Ocimum tenuifolium</i>	Native thyme	
<i>Oplismenus aemulus</i>	Basket Grass	

Species	Common name	Notes
<i>Opuntia stricta</i>	Prickly Pear	LP Act Class 2 Weed
<i>Opuntia tomentosa</i>	Velvety Tree Pear	LP Act Class 2 Weed
<i>Otocarpum acropterum</i>	Coral Salt Bush	
<i>Owenia acidula</i>	Emu Apple	
<i>Oxalis stricta</i>	Yellow Wood Sorrel	
<i>Pandorea pandorana</i>	Wonga Vine	
<i>Panicum decompositum</i>	Hairy Panic	
<i>Panicum effusum</i>	Inquisitive Grass	
<i>Panicum laevinode</i>	Panic grass	
<i>Panicum simile</i>	Two-coloured Panic	
<i>Paractaenum refractum</i>	Bristle brush grass	
<i>Parsonsia lanceolata</i>	Monkey Rope	
<i>Paspalidium caespitosum</i>	Brigalow Grass	
<i>Paspalidium distans</i>	Paspalidium	
<i>Paspalidium distichum</i>	Water Couch	
<i>Paspalidium jubiflorum</i>	Warrego Grass	
<i>Paspalidium rarum</i>	Rare paspalidium	
<i>Paspalidium constrictum</i>	Knotty butt grass	
<i>Paspalum dilatatum</i>	Paspalum	
<i>Paspalum paniculatum</i>	Paspalum	
<i>Passiflora arizonica</i>	Passion flower	
<i>Pennisetum ciliare</i>	Buffel Grass	
<i>Perotis rara</i>	Comet Grass	
<i>Persicaria attenuata</i>	Smartweed	
<i>Persicaria decipiens</i>	Slender Knotweed	
<i>Persicaria orientale</i>	Smartweed	
<i>Persicaria strigosum</i>	Smartweed	
<i>Persoonia falcata</i>	Geebung	
<i>Petalostigma pachyphyllum</i>	Smooth Quinine	
<i>Petalostigma pubescens</i>	Quinine	
<i>Petalostylis labicheoides</i>	Butterfly Bush	
<i>Petrorhagia dubia</i>	Hairy pink	
<i>Phragmites australis</i>	Common Reed	
<i>Phyllanthus cunninghamii</i>	Phyllanthus	
<i>Phyllanthus fuernrohrii</i>	Phyllanthus	

Species	Common name	Notes
<i>Phyllanthus gunnii</i>	Phyllanthus	
<i>Phyllanthus maderaspatensis</i>	Phyllanthus	
<i>Phyllanthus mitchellii</i>	Phyllanthus	
<i>Phyllanthus rauwenhoffii</i>	Phyllanthus	
<i>Phyllanthus similis</i>	Phyllanthus	
<i>Physalis minima</i>	Wild gooseberry	
<i>Pimelea microcephala</i>	Pussy Tail	
<i>Pimelea Sp</i>	Small pimelia	
<i>Pittosporum angustifolium</i>	Native Apricot	
<i>Pittosporum phyllirioides</i>	Wild Apricot	
<i>Pittosporum spinescens</i>	Wallaby Apple	
<i>Pittosporum undulatum</i>	Pittosporum	
<i>Pittosporum viscidum</i>	black-fruited thornbush	
<i>Platycerium veitchii</i>	Silver Elk horn	
<i>Plectranthus parviflorus</i>	Native Coleus	
<i>Podolepis jaceoides</i>	Showy Copper Wire Daisy	
<i>Polygonum aviculare</i>	Wire Weed	
<i>Polyscias elegans</i>	celery wood	
<i>Pomax umbellata</i>	Pomax	
<i>Portulaca oleracea</i>	Pig Weed	
<i>Portulaca pilosa</i>	Hairy Pigweed	
<i>Pratia concolor</i>	Poison Pratia	
<i>Pratia purpurascens</i>	Whiteroot Pratia	
<i>Proiphys cunninghamii</i>	Moreton Bay lily	
<i>Pseuderanthemum variabile</i>	Love Flower	
<i>Psilotum nudum</i>	skeleton fork fern	
<i>Psoralea cinerea</i>	Annual Verbine	
<i>Psydrax odorata</i>	Shiny-leaved Canthium	
<i>Psydrax odorata forma buxifolius</i>	Round Leaf Psydrax	
<i>Psydrax odorata subsp. australiana</i>	Canthium	
<i>Psydrax oleifolia</i>	Canthium	
<i>Psydrax oleifolia forma australiensis</i>	Canthium	
<i>Psydrax oleifolia forma buxifolius</i>	Round Leaf Psydrax	
<i>Pterocarpus argutum</i>		

Species	Common name	Notes
<i>Pterocaulon sphacelatum</i>	Apple Bush	
<i>Ptilotus macrocephalus</i>	Green pussy tail	
<i>Ptilotus obovatus</i>	Silvertail	
<i>Ptilotus polystachyus</i>	Pussy Tails	
<i>Ranunculus lappaceus</i>	Australian Buttercup	
<i>Ranunculus pentandrus</i>	Buttercup	
<i>Rhynchosia minima</i>	Rhynchosia	
<i>Rhynchosia pterochaeta</i>	Rusty heads	
<i>Richardia brasiliensis</i>	Mexican clover	
<i>Rumex brownii</i>	Swamp Dock	
<i>Rumex crispus</i>	Curled Dock	
<i>Salsola kali</i>	Roly Poly	
<i>Salvia reflexa</i>	Mint Bush	
<i>Santalum lanceolatum</i>	Sandalwood	
<i>Sarcostemma viminale</i>	Caustic Weed	
<i>Scaevola parvibarbata</i>	Purple Flower Scaevola	
<i>Scaevola spinescens</i>	Spiny Scaevola	
<i>Sclerolaena birchii</i>	Galvanised Burr	
<i>Sclerolaena muricata</i>	Black Rolly-polly	
<i>Senecio lautus</i>	Fire Weed	
<i>Senecio queenslandicus</i>	Queensland Daisy	
<i>Senna artemisioides</i>	Senna	
<i>Senna artemisioides subsp artemisioides</i>	Silver Cassia	
<i>Senna artemisioides subsp sturtii</i>	Cassia	
<i>Senna barclayana</i>	Bean bush, Pepper Senna	
<i>Senna coronilloides</i>	Coffee Senna	
<i>Senna planiticola</i>	Ant Senna	
<i>Sesbania campylocarpa</i>	Sesbania	
<i>Sesbania formosa</i>	Swamp Corkwood	
<i>Sesbania grandiflora</i>	Corkwood Tree	
<i>Sesbania sp.</i>	Sesbania	
<i>Setaria australiensis</i>	Pigeon Grass	
<i>Setaria incrassata</i>	Purple Pigeon Grass	
<i>Setaria surgens</i>	Pigeon Grass	
<i>Sicyos australis</i>	Wild Cucumber	

Species	Common name	Notes
<i>Sida acuta</i>	Spiny head sida	
<i>Sida cordifolia</i>	Flannel weed	
<i>Sida fibulifera</i>	Creeping Sida	
<i>Sida platycalyx</i>	Sida	
<i>Sida retusa</i>	Golden Sida	
<i>Sida rhombifolia</i>	Paddy's lucerne	
<i>Sida rohlenae</i>	Shrub Sida	
<i>Sida spinosa</i>	Spiny sida	
<i>Sida subspicata</i>	Queensland Hemp	
<i>Sida trichopoda</i>	High sida	
<i>Sigesbeckia orientalis</i>	Indian Weed	
<i>Siphonodon australis</i>	ivorywood	
<i>Smilax glycyphylla</i>	Native Sarsparilla	
<i>Solanum americanum</i>	American Nightshade	
<i>Solanum brownii</i>	Violet Nightshade	
<i>Solanum chippendalei</i>	Bush tomato	
<i>Solanum echinatum</i>	Wild tomato	
<i>Solanum ellipticum</i>	Potato Bush	
<i>Solanum esuriale</i>	Brown Potato Bush	
<i>Solanum nigrum</i>	Black nightshade	
<i>Solanum parviflora</i>		
<i>Solanum stelligerum</i>	devil's needles	
<i>Sonchus oleraceus</i>	Sow Thistle	
<i>Sorghum alum</i>	Silk Sorghum	
<i>Sorghum halepense</i>	Johnson Grass	
<i>Sorghum plumosa</i>	Plume sorghum	
<i>Sorghum plumosum</i>	Plume sorghum	
<i>Spartothamnella juncea</i>	native broom	
<i>Spartothamnella puberula</i>	Spiky Bush	
<i>Spermacoce stenophylla</i>		
<i>Sporobolus actinocladus</i>	Ray Grass	
<i>Sporobolus australasicus</i>	Drop Seed Grass	
<i>Sporobolus caroli</i>	Desert Sporobolus	
<i>Sporobolus creber</i>	Western Rats Tail Grass	
<i>Sporobolus elongatus</i>	Tall sporobolus	

Species	Common name	Notes
<i>Streptoglossa bubakii</i>	Minty bush	
<i>Stylidium debile</i>	frail trigger plant	
<i>Stylidium sp.</i>	Trigger Plant	
<i>Stylosanthes hamata</i>	Fine stem stylo	
<i>Stylosanthes scabra</i>	Fine Stem Stylo	
<i>Stylosanthes scabra cv. Seca</i>	Seca Stylo	
<i>Swainsona galegifolia</i>	Swainsona	
<i>Swainsona greyana</i>	Swainsona pea	
<i>Tagetes minuta</i>	Stinking Rodger	
<i>Taraxacum officinale</i>	Dandelion	
<i>Tephrosia leptoclada</i>	Slender pea	
<i>Tephrosia supina</i>	Tephrosia	
<i>Terminalia oblongata</i>	Yellow wood	
<i>Teucrium racemosum</i>	Grey Germander	
<i>Themeda avenacea</i>	Wild Oats Grass	
<i>Themeda quadrivalvis</i>	Grader Grass	
<i>Themeda triandra</i>	Kangaroo Grass	
<i>Thryptomene parviflora</i>	Little Leaf Shrub	
<i>Thysanotus tuberosus</i>	Fringed Lilly	
<i>Tradescantia fluminensis</i>	Wandering Jew	
<i>Tragus australianus</i>	Burr Grass	
<i>Trianthema portulacastrum</i>	Black Pigweed	
<i>Trianthema triquetra</i>	Red Spinach	
<i>Triraphis mollis</i>	Purple plume grass	
<i>Tribulus terrestris</i>	Goat head Burr	
<i>Trichodesma zeylanicum</i>	Camel Bush	
<i>Tripogon loliiformis</i>	Five minute grass	
<i>Turraea pubescens</i>	Native Witch-hazel	
<i>Urochloa mosambicensis</i>	Urochloa	
<i>Urochloa panicoides</i>	Liverseed grass	
<i>Ventilago viminalis</i>	Vine Tree	
<i>Verbena aristigera</i>	Fine Leaf Verbena	
<i>Verbena bonariensis</i>	Bunchy Verbena	
<i>Verbena litoralis</i>	Tall Verbena	
<i>Verbena officinalis</i>	Common Verbena, Native Verbena	

Species	Common name	Notes
<i>Verbena tenuisecta</i>	Mayne's Curse	
<i>Verbesina encelioides</i>	Crownbeard	
<i>Vetiveria elongata</i>	Tall tamil grass	
<i>Vigna lanceolata</i>	Vigna, Maloga bean	
<i>Viola hederacea</i>	Native Viola	
<i>Wahlenbergia communis</i>	Large Bluebells	
<i>Wahlenbergia gracilis</i>	Sprawling Bluebell	
<i>Wahlenbergia sp</i>	Bluebell	
<i>Waltheria indica</i>	Waltheria	
<i>Wedelia sp</i>	Wedelia	
<i>Xanthium occidentale</i>	Noogoora Burr	
<i>Xanthium spinosum</i>	Bathurst Burr	
<i>Xylomelum cunninghamianum</i>	Woody pear	
<i>Yakirra majuscula</i>	Yakirra	
<i>Zinnia multiflora</i>	Zinnia	
<i>Zornia muriculata</i>	Zornia	
<i>Zornia prostrata</i>	Zornia	
<i>Zygophyllum howittii</i>	Red twinleaf	