

# Santos historical performance data

All reasonable effort has been made to provide accurate information in this data set; however Santos Limited (Santos) does not warrant or represent its accuracy. Anyone seeking to rely on information in this data set or draw detailed conclusions from the data should contact Santos via email: [sustainability@santos.com](mailto:sustainability@santos.com)

## Greenhouse gas

Energy consumption and greenhouse gas emissions	2008-09	2009-10	2010-11	2011-12	2012-13	2013-14	2014-15
Direct energy consumption by primary source (PJ)	28	31	31	30	29	32	34
Indirect energy consumption by primary source (PJ)	-	0.18	0.20	0.20	0.20	0.18	0.19
Installed capacity of renewable energy generation (kW)	-	-	116	116	156	473	473
Direct greenhouse gas emissions, Santos equity share (Scope 1, tCO <sub>2</sub> e)	-	-	2,785,652	2,942,272	2,974,731	3,359,848	3,629,306
Emission of CO <sub>2</sub> operated sites (tCO <sub>2</sub> e)	3,225,967	3,269,744	3,195,283	3,243,540	3,174,740	3,485,302	3,857,866
Emission of CH <sub>4</sub> operated sites (tCO <sub>2</sub> e)	228,270	392,952	380,904	562,984	499,434	446,377	483,078
Emission of N <sub>2</sub> O operated sites (tCO <sub>2</sub> e)	3,219	3,285	3,227	1,249	3,692	4,923	7,254
Direct greenhouse gas emissions (Scope 1, tCO <sub>2</sub> e)	3,457,456	3,665,981	3,579,414	3,807,773	3,677,866	3,936,602	4,348,198
Indirect greenhouse gas emissions (Scope 2, tCO <sub>2</sub> e)	42,708	39,723	40,466	37,795	36,407	32,809	32,958
Total Scope 1 and 2 greenhouse gas emissions, (tCO <sub>2</sub> e)	3,500,164	3,705,704	3,619,880	3,845,568	3,714,273	3,969,411	4,381,156
Volume of flared hydrocarbon (m <sup>3</sup> )	-	-	-	58,269,984	61,278,240	94,108,867	212,228,254
Volume of continuously flared hydrocarbon (m <sup>3</sup> )	-	-	-	58,116,392	40,399,377	49,824,877	126,838,072
Volume of vented hydrocarbon (m <sup>3</sup> )	-	-	-	45,639,911	38,125,376	35,441,633	37,988,065
Volume of continuously vented hydrocarbon (m <sup>3</sup> )	-	-	-	16,266,765	15,915,311	13,566,804	19,476,205

Emissions and energy are reported on an Australian financial year basis in accordance with *National Greenhouse and Energy Reporting Act, 2007*. Direct emissions are Scope 1 and indirect emissions are Scope 2 and 3.

All data are presented as Santos gross operated for the calendar year, all references to \$ are Australian currency, unless otherwise stated. Data are presented to the nearest significant figure. Where data are unavailable or not applicable, it is represented as (-); where data is zero or de minimis it is represented as (0).

Further information regarding Santos' performance is available from our website, including copies of our Corporate Governance Statement, Annual Report, Sustainability Report and Shareholder Review: [www.santos.com](http://www.santos.com)

## Environment

<b>Emissions inventory Australian operations (tonnes)</b>	<b>2008</b>	<b>2009</b>	<b>2010</b>	<b>2011</b>	<b>2012</b>	<b>2013</b>	<b>2014</b>	<b>2015</b>
Arsenic & compounds	0.008	0.010	0.022	0.022	0.020	0.016	0.018	
Benzene	59	50	17	17	21	42	45	
Beryllium & compounds	0.005	0.006	0.006	0.006	0.005	0.004	0.004	
Cadmium & compounds	0.039	0.048	0.054	0.054	0.043	0.021	0.022	
Carbon monoxide	3,547	4,461	5,167	3,648	3,661	7,641	10,678	
Chromium III Compounds	0.041	0.051	0.121	0.146	0.132	0.054	0.050	
Copper & compounds	0.062	0.075	0.127	0.164	0.117	0.047	0.039	
Cumene	-	-	0.122	0.135	0.168	1.276	4	
Cyclohexane	-	-	19	21	24	33	27	
Ethylbenzene	3	3	2	2	2	47	47	
n-Hexane	104	49	101	97	125	508	486	
Hydrogen sulphide*	0.066	0.037	0.2	59	63	35	44	
Lead and compounds	0.011	0.013	0.102	0.128	0.110	0.059	0.028	
Mercury & compounds	0.005	0.006	0.007	0.007	0.007	0.006	0.007	
Methanol	57	63	269	125	125	78	57	
Nickel & compounds	0.075	0.092	0.061	0.065	0.049	0.035	0.038	
Oxides of Nitrogen	18,278	24,919	30,704	20,083	20,188	12,257	13,444	
Particulate Matter (less than 2.5 micrometres)	256	254	289	245	257	275	314	
Particulate Matter (less than 10.0 micrometres)	256	291	293	248	261	279	313	
Phenol	50	59	52	49	34	21	23	
Polycyclic aromatic hydrocarbons	0.118	0.133	0.06	0.033	0.034	0.048	0.006	
Sulphur dioxide	27	32	28	21	22	30	38	
Toluene (methylbenzene)	42	37	22	24	26	83	79	
Total Volatile Organic Compounds	4,469	4,632	9,694	6,887	9,956	8,897	8,002	
Xylenes	29	27	15	17	18	61	63	

These data are reported mid year to the National Pollutant Inventory; 2015 data will be published in the 2016 Sustainability Report.

\* A correction of mass balance calculation was identified during review of systems in 2012.

<b>Incidents and spills</b>	<b>2008</b>	<b>2009</b>	<b>2010</b>	<b>2011</b>	<b>2012</b>	<b>2013</b>	<b>2014</b>	<b>2015</b>
Uncontained hydrocarbon volume (m <sup>3</sup> )	199.6	10.2	18.7	65.9	66.7	385.5	20.0	382.4
Total number of hydrocarbon spills (>10 L)	-	-	73	85	161	30	42	39
Uncontained non-hydrocarbon volume (m <sup>3</sup> )	-	-	-	-	873	1,426	2,957	2,279
Total number of non-hydrocarbon spills (>10 L)	-	-	-	-	46	47	52	36
Number of fines for non-compliance with environmental regulations	-	1	3	6	14	17	12	3
Value of fines for non-compliance with environmental regulations (\$)	-	2,000	6,000	12,000	35,000	34,800	72,000	34,155

## Environment continued

<b>Santos operations footprint (ha)</b>	<b>2008</b>	<b>2009</b>	<b>2010</b>	<b>2011</b>	<b>2012</b>	<b>2013</b>	<b>2014</b>	<b>2015</b>
<b>Total</b>	19,492	26,531	28,896	29,082	26,016	21,279	33,690	24,420

The operations footprint includes but is not limited to ponds and dams, pipelines, plant and facilities, roads, waste facilities and wells.

<b>Waste management (tonnes)</b>	<b>2008</b>	<b>2009</b>	<b>2010</b>	<b>2011</b>	<b>2012</b>	<b>2013</b>	<b>2014</b>	<b>2015</b>
<b>Solid waste recycled (tonnes)</b>	-	-	603	2,826	2,019	4,873	14,064	11,381
<b>Solid waste to landfill (tonnes)</b>	-	-	2,513	7,125	12,778	54,013	39,608	22,966

Santos changed monitoring solid waste to tonnes from volume in 2010.

The large year on year increase in the amount of waste recycled and sent to landfill is attributed to an improvement in data collection.

<b>Water withdrawal (1000 m<sup>3</sup>)</b>	<b>2009</b>	<b>2010</b>	<b>2011</b>	<b>2012</b>	<b>2013</b>	<b>2014</b>	<b>2015</b>
<b>New South Wales</b>	-	-	11	11	0	162	271
<b>Northern Territory</b>	91	29	21	22	92	89	41
<b>Queensland</b>	10,307	8,894	9,020	10,233	7,414	9,497	9,721
<b>South Australia</b>	8,025	6,949	7,306	7,084	7,121	7,318	7,388
<b>Victoria</b>	-	2	5	12	8	7	6
<b>Western Australia</b>	2,131	1,593	1,988	1,639	1,455	3,360	2,185
<b>Bangladesh</b>	-	-	44	24	18	3	1
<b>Indonesia</b>	-	379	5,651	6,690	12,517	12,791	8,883
<b>Total</b>	<b>20,554</b>	<b>17,846</b>	<b>24,046</b>	<b>25,715</b>	<b>28,625</b>	<b>33,227</b>	<b>28,496</b>

Santos aims to continuously improve water data capture across all operated sites. This table represents an approximation of Santos' water resource management at this time.

<b>Water discharge (1000 m<sup>3</sup>)</b>	<b>2009</b>	<b>2010</b>	<b>2011</b>	<b>2012</b>	<b>2013</b>	<b>2014</b>	<b>2015</b>
<b>New South Wales</b>	-	-	10	3	0	-	271
<b>Northern Territory</b>	3	9	3	7	9	-	41
<b>Queensland</b>	10,022	8,785	7,437	9,971	6,488	-	9,721
<b>South Australia</b>	6,685	5,612	6,736	6,514	5,397	-	7,388
<b>Victoria</b>	2	4	19	13	7	-	6
<b>Western Australia</b>	2,162	1,612	2,028	1,656	1,484	-	2,185
<b>Bangladesh</b>	-	-	30	25	28	-	1
<b>Indonesia</b>	-	379	5,651	6,690	12,517	-	8,883
<b>Total</b>	<b>18,874</b>	<b>16,401</b>	<b>21,914</b>	<b>24,879</b>	<b>25,930</b>	<b>-</b>	<b>28,496</b>

Santos aims to continuously improve water data capture across all operated sites. This table represents an approximation of Santos' water resource management at this time. The 2014 data was not available when the 2014 Sustainability Report was published.

## Social

Employees (headcount)	2008	2009	2010	2011	2012	2013	2014	2015
Number of employees	1,940	2,096	2,367	2,847	3,289	3,502	3,636	2,946

Percentage of total employees covered by collective bargaining agreements: 11%

Employee turnover (%)	2008	2009	2010	2011	2012	2013	2014	2015
Voluntary employee turnover rate	7.0	3.5	6.8	7.0	7.3	-	-	5.0
Total employee turnover rate	-	-	-	-	9.7	9.6	10.4	25.0

Workforce diversity (% females by employee category)	2008	2009	2010	2011	2012	2013	2014	2015
Strategic leader	9	15	7	23	23	29	20	11
Functional leader/manager	9	11	11	14	16	16	19	20
Team leader/supervisor	12	10	11	12	13	13	13	15
Technical specialist	24	16	19	21	24	22	20	21
Team member	23	25	33	29	31	31	30	30
Overall (% females overall)	21	21	21	25	27	27	26	26

	Employees entitled to parental leave during 2014		Employees that accessed parental leave during 2014		Employees returned to work after parental leave ended during 2014		Employees who returned from parental leave in 2014 and are still employed with Santos year end 2015	
	M	F	M	F	M	F	M	F
New South Wales	36	7	1	1	1	1	1	1
Northern Territory	23	0	0	0	0	0	0	0
Queensland	857	318	43	53	43	24	32	38
South Australia	1,086	364	60	52	60	26	49	43
Victoria	13	2	0	0	0	0	0	0
Western Australia	50	25	7	6	7	3	6	4
Others	140	70	9	2	9	1	8	2
Total	2,205	786	120	114	120	55	96	88

	Total employees		Total employees with performance and career development plans in place		Percent of employees with performance and career development plans	
	M	F	M	F	M	F
Executive	12	1	1	0	8%	0%
Manager	157	40	65	14	41%	35%
Team Leader	233	56	151	36	65%	64%
Supervisor	102	2	77	2	75%	100%
Expert	22	2	12	1	55%	50%
Senior	245	70	137	28	56%	40%
Independent	332	156	221	76	67%	49%
Developing	163	108	124	75	76%	69%
Team Member	915	330	466	201	51%	61%
Total	2,181	765	1,254	433	57%	57%

## Social continued

<b>Safety performance data</b>	<b>2008</b>	<b>2009</b>	<b>2010</b>	<b>2011</b>	<b>2012</b>	<b>2013</b>	<b>2014</b>	<b>2015</b>
Employee fatalities	0	0	0	0	0	0	0	0
Contractor fatalities	1	1	1	0	0	1	0	0
Employee total recordable case frequency rate*	2.2	1.5	1.2	1.4	1.7	0.73	1.28	1.70
Contractor total recordable case frequency rate*	7.6	4.8	4.8	4.3	7.0	5.16	4.81	3.90
Employee lost time injury frequency rate	-	0.39	0.20	1.26	0.14	0.52	0.46	0.12
Contractor lost time injury frequency rate	-	1.39	1.31	1.12	1.09	0.70	0.78	0.12
High potential incidents	-	-	2	6	16	12	15	4
Tier 1 process safety events	-	-	-	-	9	9	8	4
Tier 2 process safety events	-	-	-	-	13	25	27	20
Absentee rate (%)	-	-	-	1.0	1.6	1.6	2.0	1.8
Total recordable occupational illness cases	-	-	4	4	1	5	0	2
Employee representation on health and safety committees (%)	-	-	90	89	90	95	98	100

\*First aid injuries are not covered by the total recordable case frequency rate, Santos injury rate is based on the APPEA (2005) Safety Incident Reporting Guidelines.

<b>Community investment (\$000)</b>	<b>2008</b>	<b>2009</b>	<b>2010</b>	<b>2011</b>	<b>2012</b>	<b>2013</b>	<b>2014</b>	<b>2015</b>
Arts/Culture	326	878	1,349	1,464	1,374	1,214	1,627	811
Community/Health	616	1,954	2,705	7,231	9,375	3,316	5,935	3,457
Education/Youth	6,236	2,680	4,745	3,763	1,418	4,055	2,148	296
Environment	78	679	1,449	1,215	1,112	1,320	774	677
Indigenous	137	200	802	1,057	2,025	2,503	2,476	923
Industry/Government	141	127	335	229	527	202	258	12,381
<b>Total</b>	<b>7,534</b>	<b>6,518</b>	<b>11,385</b>	<b>14,959</b>	<b>15,831</b>	<b>12,610</b>	<b>13,218</b>	<b>18,545</b>

Government tax and royalty payments are not included.

Community infrastructure investments and charitable donations are included in the most applicable category (e.g. In 2015, over \$11 million community infrastructure spend was included in Government and Industry category).

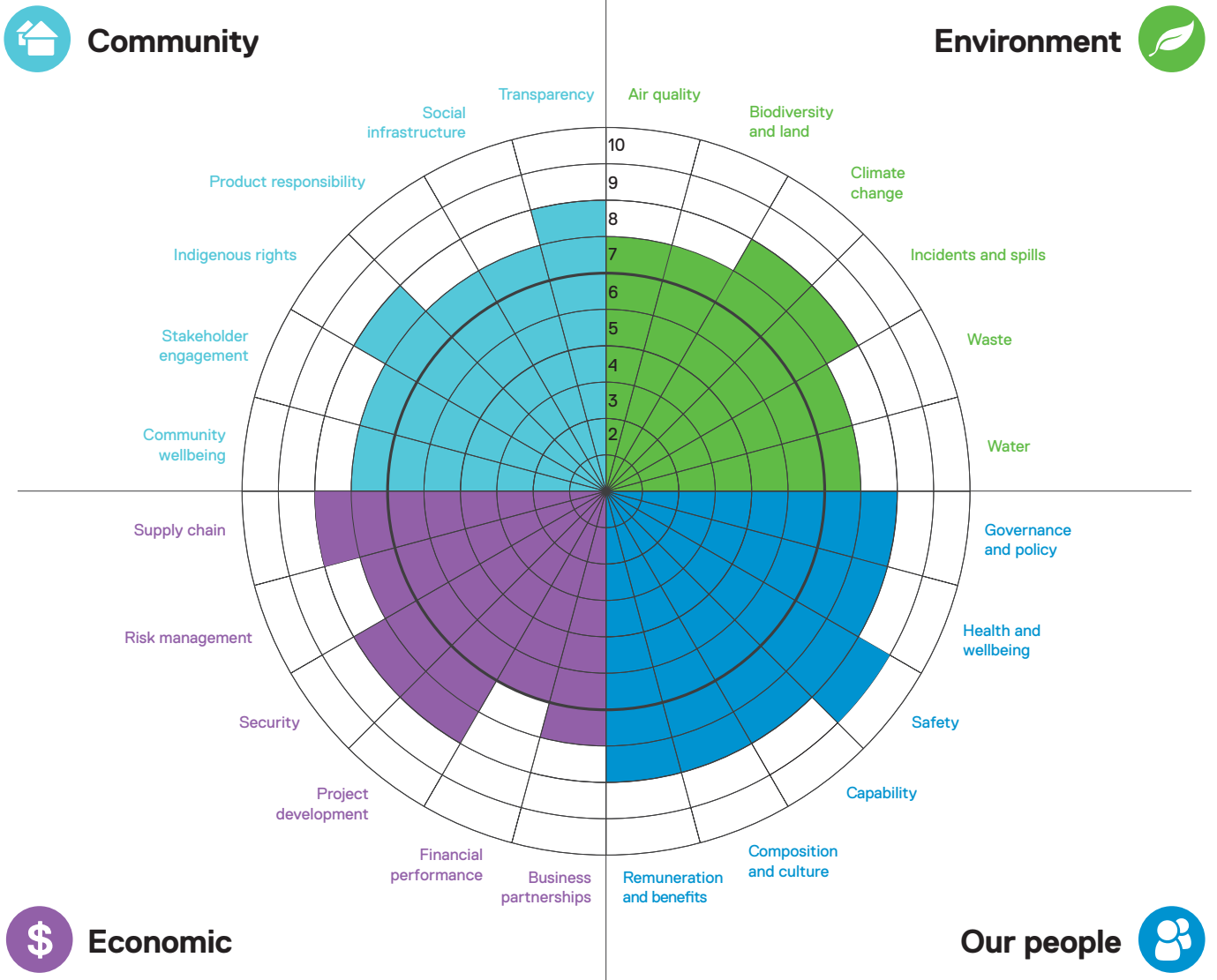
Community wellbeing includes sponsorship of community activities and events such as the Santos Tour Down Under.

## Economic

<b>Socioeconomic contribution</b>	<b>2008</b>	<b>2009</b>	<b>2010</b>	<b>2011</b>	<b>2012</b>	<b>2013</b>	<b>2014</b>	<b>2015</b>
Number of shareholders	78,933	107,138	112,145	113,173	111,135	112,397	140,509	161,854
Wages and salaries (\$million)	282	313	354	411	533	613	665	670
Materials, goods and services (\$million)	1,426	1,129	1,364	2,066	6,492	7,904	6,793	3,350
Royalties and taxes (\$million)	546	731	185	653	375	315	261	183
Sponsorship (\$million)	8	7	11	15	15	13	13	19
Payments to providers of capital (excluding capital repayment)	-	-	-	368	353	375	468	580
Proportion of spending on locally based suppliers	-	-	-	-	78%	90%	87%	81%
<b>Financial performance as at 31 December</b>	<b>2008</b>	<b>2009</b>	<b>2010</b>	<b>2011</b>	<b>2012</b>	<b>2013</b>	<b>2014</b>	<b>2015</b>
Santos' average realised oil price (A\$/bbl)	117.45	78.83	87.35	115.29	113.78	120.96	114.21	71.44
<b>Financial performance (\$million)</b>								
Product sales revenue	2,762	2,181	2,228	2,721	3,223	3,602	4,037	3,246
Net profit after tax attributable to the shareholders of Santos Ltd	1,650	434	500	753	519	516	(935)	(2,698)
<b>Financial position (\$million)</b>								
Total assets	9,802	11,361	13,769	15,814	16,988	20,664	22,345	21,926
Net debt (cash)	506	(605)	(1,201)	(205)	1,334	4,918	7,490	6,530
Total equity (shareholder funds)	4,478	6,967	7,603	8,963	9,354	10,212	9,413	10,202
Market capitalisation	8,696	11,721	11,506	11,560	10,669	14,222	8,116	6,500
<b>Reserves and production (mmboe)</b>								
2P reserves (mmboe)	1,013	1,440	1,445	1,364	1,406	1,368	1,245	945
Production volume (mmboe)	54.4	54.4	49.9	47.2	52.1	51.0	54.1	58.0
2P five-year reserves replacement ratio (organic, %)	193	361	415	441	435	331	97	(38)
<b>Exploration</b>								
Exploration wells drilled (number)	13	6	3	4	4	12	9	4
Expenditure (\$million)	233	181	90	151	162	391	323	272
<b>Other capital expenditure (\$million)</b>								
Delineation and development	1,290	1,204	1,684	2,769	2,960	3,704	3,247	1,367
Buildings, plant and equipment	105	172	107	149	231	274	261	179

# Sustainability scorecard

Our ten-year journey demonstrates the drive we have to critically evaluate and identify areas to improve our performance, management systems and disclosures to meet the growing needs of our stakeholders and maintain recognised leading practices.



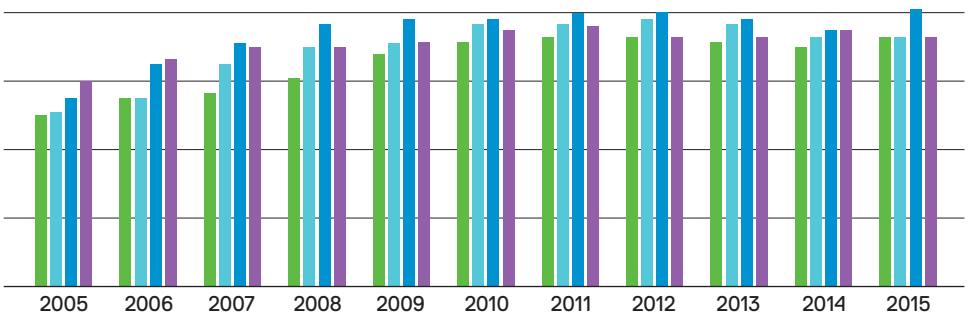
9 - 10 Recognised leader

7 - 8 High performance

5 - 6 Implementation and compliance focus

3 - 4 Developing policy/systems

0 - 2 No procedure in place, poor performance



Environment    Community    Our People    Economic